



## ST. GEORGES GROVE, SW17

£1,750 PCM

- Modern Apartment
- Open Plan Living Space
- One Double Bedroom
- Modern Bathroom Suite





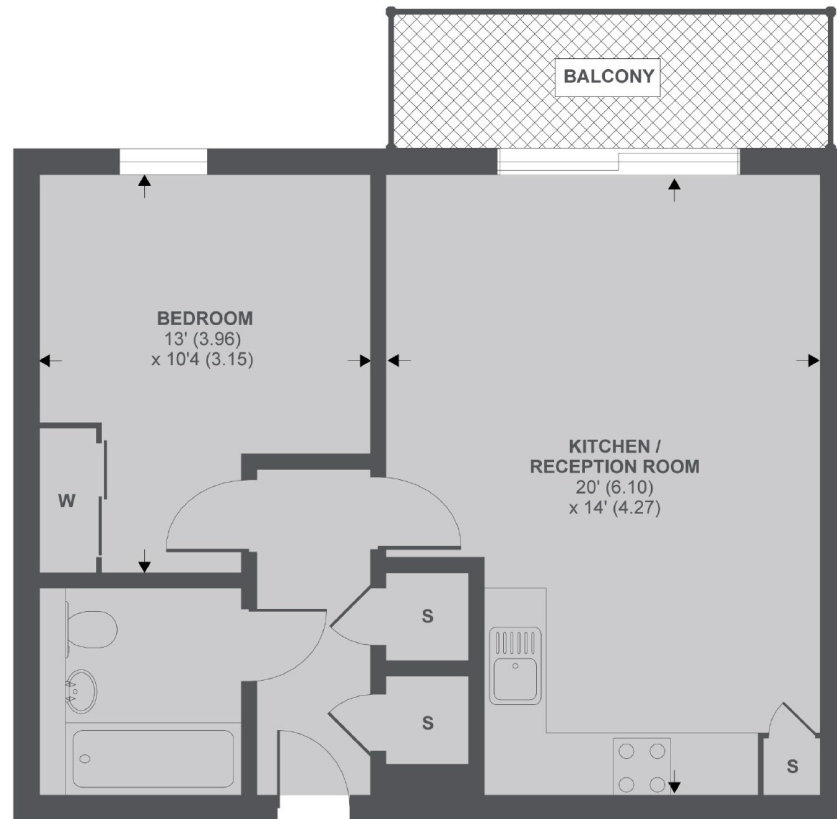
## ABOUT THE HOME

A one double bedroom modern apartment with private balcony and on site shopping facilities set within one of Earlsfield most popular developments. Including an open living space with modern fitted kitchen, ample storage throughout and a modern bathroom suite.

Located within a short distance to Earlsfield Station, The property would be ideal for either a single occupant or professional couple.







3rd Floor

APPROX. GROSS INTERNAL FLOOR AREA 503 SQ FT 46.7 SQ METRES

Copyright nichecom.co.uk 2019 REF : 532695

### JACKSONS EARLSFIELD

372-374 Garratt Lane,  
Earlsfield, London, SW18 4ES  
Sales: 020 8971 7979  
Lettings: 020 8971 7070

Energy Rating: B We aim to make our particulars both accurate and reliable. However they are not guaranteed; nor do they form part of an offer or contract. If you require clarification on any points then please contact us, especially if you're traveling some distance to view. Please note that appliances and heating systems have not been tested and therefore no warranties can be given as to their good working order.