



211 Holcombe Road, Greenmount

Bury

£180,000



211 Holcombe Road

Greenmount, Bury

Council Tax band: B

Tenure: Leasehold

EPC Energy Efficiency Rating: D

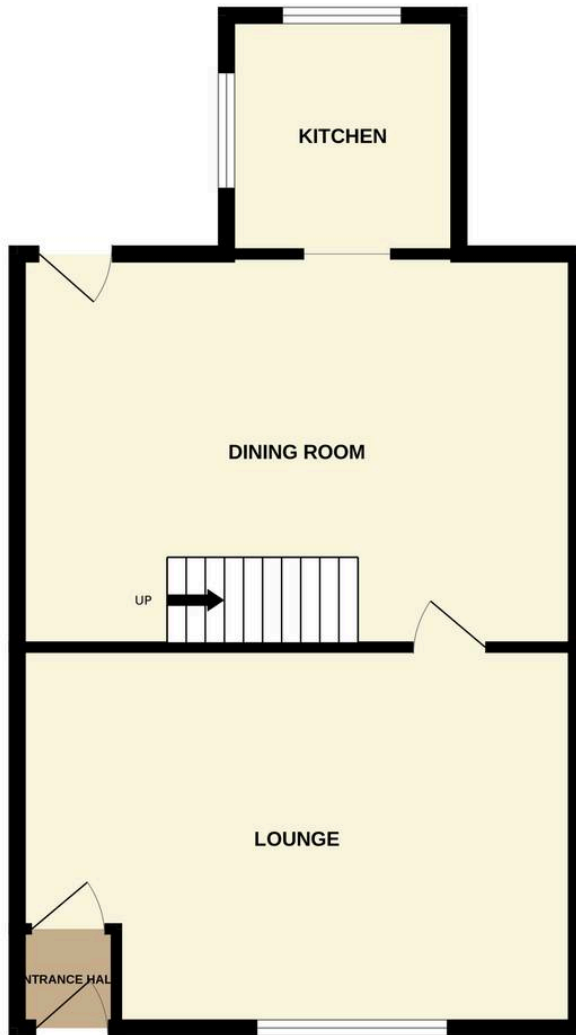
EPC Environmental Impact Rating:

- STONE END OF TERRACE HOUSE
- REQUIRES FULL REFURBISHMENT
- 2 BEDROOMS
- CHOICE GREENMOUNT LOCATION WITH PASTORAL / OPEN ASPECT VIEWS
- LOW MAINTENANCE GARDEN FRONTED & REAR GARDEN/YARD
- LOUNGE & SEPARATE DINING ROOM
- EXTENDED KITCHEN
- BATHROOM
- OFFERED WITH NO ONWARD CHAIN
- WALKING DISTANCE TO HOLLYMOUNT & GREENMOUNT PRIMARY SCHOOL

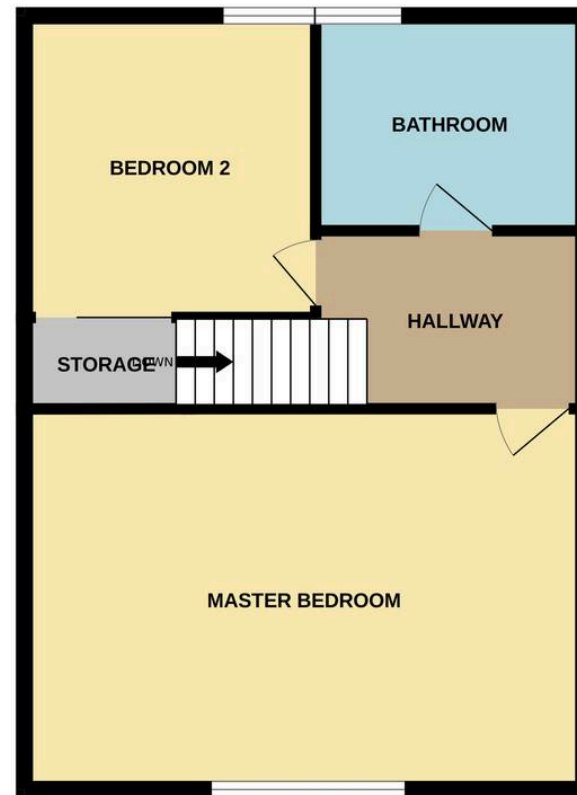




GROUND FLOOR
577 sq.ft. (53.6 sq.m.) approx.



1ST FLOOR
512 sq.ft. (47.5 sq.m.) approx.



TOTAL FLOOR AREA : 1089 sq.ft. (101.1 sq.m.) approx.

Whilst every attempt has been made to ensure the accuracy of the floorplan contained here, measurements of doors, windows, rooms and any other items are approximate and no responsibility is taken for any error, omission or mis-statement. This plan is for illustrative purposes only and should be used as such by any prospective purchaser. The services, systems and appliances shown have not been tested and no guarantee as to their operability or efficiency can be given.
Made with Metropix ©2025



HARRISON ESTATE AGENTS

Harrison Estate Agents, 10 Bolton Street - BL9 0LQ

0161 797 8616

info@harrison-estates.co.uk

www.harrison-estates.co.uk