



PER MONTH

£3,000 Per month

Robson Close

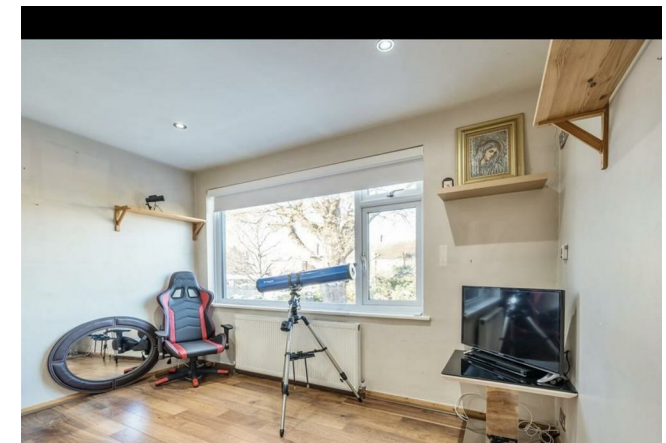
Enfield, EN2 8PZ

EPC RATING: D COUNCIL TAX BAND: F



Approx. Gross Internal Floor Area 1055 sq. ft / 98.15 sq. m (Excluding Swimming Pool)

Whilst every attempt has been made to ensure the accuracy of the floor plan contained here, measurements of doors, windows, rooms and any other items are approximate and no responsibility is taken for any error, omission, or mis-statement. The measurements should not be relied upon for valuation, transaction and/or funding purposes. This plan is for illustrative purposes only and should be used as such by any prospective purchaser or tenant.



Energy Efficiency Rating		Current	Potential
Very energy efficient - lower running costs			
(92 plus)	A		
(81-91)	B		
(69-80)	C		
(55-68)	D		
(39-54)	E		
(21-38)	F		
(1-20)	G		
Not energy efficient - higher running costs			
England & Wales		56	
		EU Directive 2002/91/EC	

Agents Note: Whilst every care has been taken to prepare these particulars, they are for guidance purposes only. All measurements are approximate and are for general guidance purposes only and whilst every care has been taken to ensure their accuracy, they should not be relied upon and potential buyers/tenants are advised to recheck the measurements.

Christopher Mark
ESTATE AGENTS

OFFICE ADDRESS
25 Heddon Court Parade
London
EN4 ODB

OFFICE DETAILS
02033 690989
Hello@christophermark.co.uk