



Woodland Walk, £320,000

- Set over three floors
- Garage
- Excellent public transport links
- Sought-after location
- Ideal family home
- EPC Rating: C



 6  3  2



About the property

This impressive six-bedroom home arranged over three floors offers spacious and versatile accommodation, ideal for larger families or those seeking flexible living space.

The ground floor comprises a welcoming living room with patio doors opening onto the rear garden. There is a separate dining room, a kitchen, a convenient ground-floor W.C. The property boasts a garage providing additional storage or parking.

The first floor hosts four bedrooms, including a generous principal bedroom benefitting from an en-suite, along with a family bathroom serving the remaining rooms on this level.

The second floor offers a further two bedrooms and a shower room, making it an ideal space for older children, guests, or home office use.

Externally, the property benefits from a rear garden, while the garage and layout across three floors provide both practicality and flexibility. This well-designed home combines generous living space with thoughtful accommodation throughout.

Agents Notes:

The garage allocated to the property is held on a leasehold title. Please make further enquiries with your conveyancer.



Accommodation

Ground Floor

Hall

Living Room

19' 7" x 11' 3" (5.97m x 3.43m)

Dining Room

9' 8" x 11' 6" (2.95m x 3.51m)

Kitchen

9' 5" x 11' 6" (2.87m x 3.51m)

W.C

First Floor

Landing

Bathroom

Bedroom 1

12' 3" x 11' 3" (3.73m x 3.43m)

En-Suite

Bedroom 4

Bedroom 5

9' 6" x 10' 4" Into door recess (2.90m x 3.15m Into door recess)

Bedroom 6

7' x 11' 3" Into door recess (2.13m x 3.43m Into door recess)

Second Floor

Bedroom 2

Irregular Shaped Room x (x)

Bedroom 3

Irregular Shaped Room x (x)

Shower Room

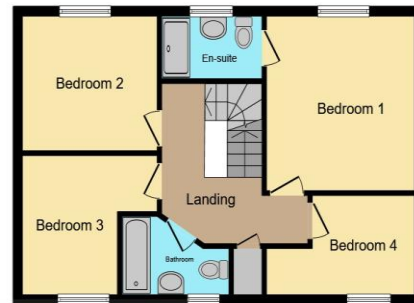
01685 722223

merthyrdfil@peteralan.co.uk

Floorplan



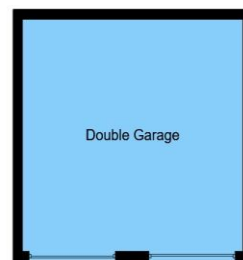
Ground Floor



First Floor



Second Floor



Garage

This floor plan is for illustrative purposes only. It is not drawn to scale. Any measurements, floor areas (including any total floor area), openings and orientation are approximate. No details are guaranteed, they cannot be relied upon for any purpose and they do not form part of any agreement. No liability is taken for any error, omission or misstatement. A party must rely upon its own inspection(s). Powered by www.focalagent.com

Important Information

Note while we endeavour to make our sales details accurate and reliable, if there is any point which is of particular interest to you, please contact the office and we will be pleased to confirm the position for you. We have not personally tested any apparatus, equipment, fixtures, fittings or services and cannot verify they are in working order or fit for their purposes. Nothing in these particulars is intended to indicate that carpets or curtains, furnishings or fittings, electrical goods (whether wired or not). Gas fires or light fittings or any other fixtures not expressly included form part of the property offered for sale. This computer generated Floorplan, if applicable, is intended as a general guide to the layout and design of the property. It is not to scale and should not be relied upon for dimensions. Tenure: We cannot confirm the tenure of the property as we have not had access to the legal documents. The buyer is advised to obtain verification from their solicitor or surveyor.

Peter Alan Limited is registered in England and Wales under company number 2073153, Registered Office is Cumbria House, 16-20 Hockliffe Street, Leighton Buzzard, Bedfordshire, LU7 1GN. VAT Registration Number is 500 2481 05. For activities relating to regulated mortgages and non-investment insurance contracts, Peter Alan Limited is an appointed representative of Connells Limited which is authorised and regulated by the Financial Conduct Authority. Connells Limited's Financial Services Register number is 302221. Most buy-to-let

