



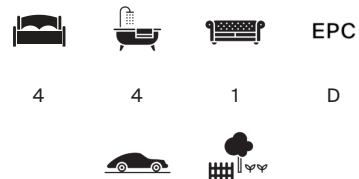
QUICKSWOOD,

London NW3



# AN ELEGANT FOUR-STOREY FAMILY HOME

A beautiful freehold family home arranged over four spacious floors,  
featuring private parking, a terrace, and a patio garden



Local Authority: London Borough of Camden

Council Tax band: G

Tenure: Freehold

Guide Price: £2,000,000



## VERSATILE LAYOUT WITH OUTDOOR SPACES

The ground floor offers a spacious reception room, ideal for everyday living or entertaining, complemented by a shower room. The first floor is arranged around a generous kitchen and dining room, creating a fantastic social hub, alongside an additional reception space that enjoys direct access to the private garden, perfect for indoor-outdoor living.

The second floor is dedicated to bedroom accommodation, featuring an impressive principal suite with an en-suite bathroom, as well as a further large double bedroom, also benefiting from its own en-suite facilities.

The top floor includes a further bedroom and bathroom, ample storage space, and access to a west-facing roof terrace.







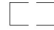
## SOUGHT-AFTER SETTING NEAR BELSIZE PARK

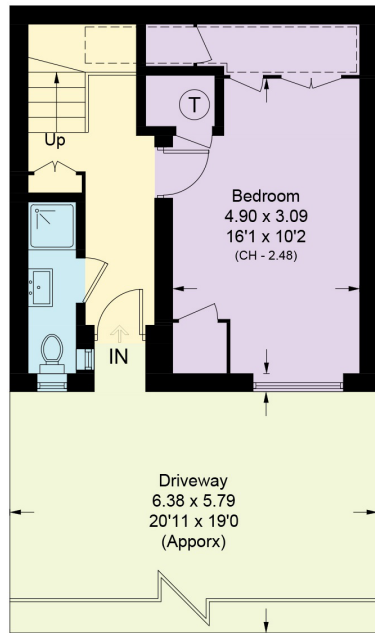
Quickswood is a private road within the popular Chalcots Estate, just off King Henry's Road. Residents benefit from off-street parking for both themselves and their guests, along with access to well-maintained communal gardens.

Belsize Park is a chic and vibrant neighbourhood positioned close to Hampstead Village, Primrose Hill, and Camden Town. Highly sought after, it is known for attracting actors, models, and musicians. Served by the Northern Line, the high street offers an excellent selection of restaurants, pubs, and shops, all contributing to its friendly and welcoming atmosphere

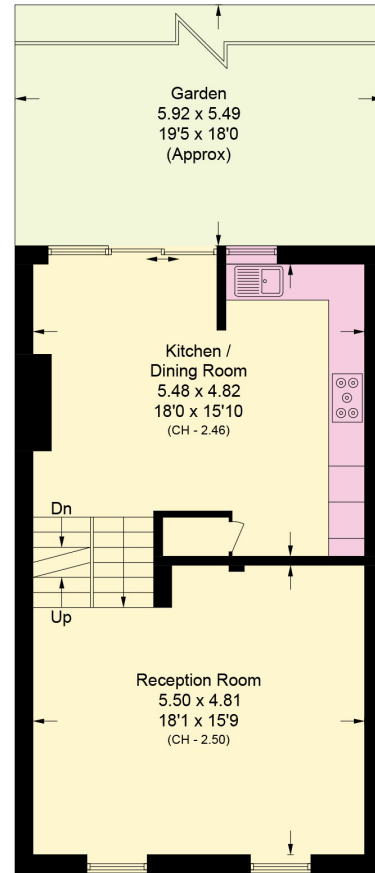




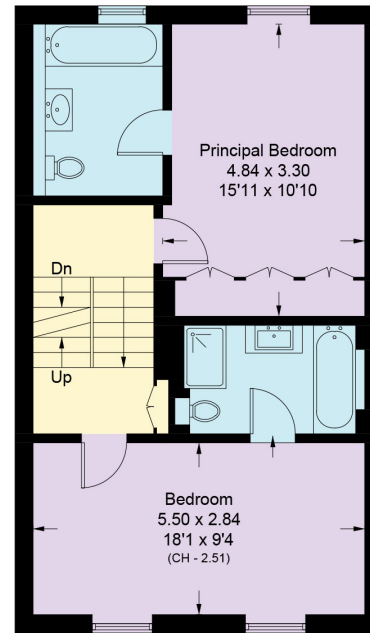
 = Reduce head height below 1.5m



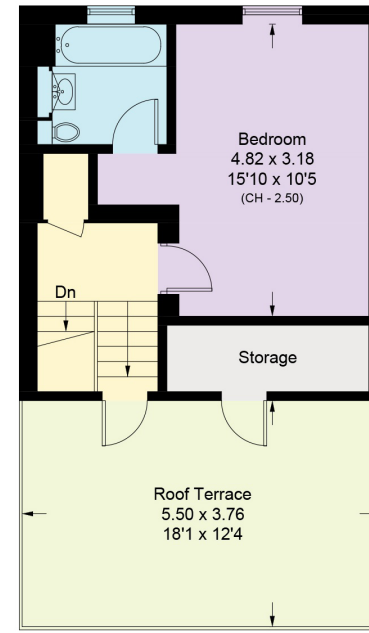
**Ground Floor**



**First Floor**



**Second Floor**



**Third Floor**

Approximate Gross Internal Area = 169.2 sq m / 1,821 sq ft

This plan is for layout guidance only. Not drawn to scale unless stated. Windows and door openings are approximate. Whilst every care is taken in the preparation of this plan, please check all dimensions, shapes and compass bearings before making any decisions reliant upon them. (ID767266)



**Ilana Ormonde**

020 3815 3357

[ilana.ormonde@knightfrank.com](mailto:ilana.ormonde@knightfrank.com)

**Knight Frank Belsize Park Sales**

2c England's Lane,

London NW3 4TG

[knightfrank.co.uk](http://knightfrank.co.uk)

Your partners in property

1. Particulars: These particulars are not an offer or contract, nor part of one. You should not rely on statements given by Knight Frank in the particulars, by word of mouth or in writing ("information") as being factually accurate about the property, its condition or its value. Neither Knight Frank nor any joint agent has any authority to make any representations about the property, and accordingly any information given is entirely without responsibility on the part of Knight Frank. 2. Material Information: Please note that the material information is provided to Knight Frank by third parties and is provided here as a guide only. While Knight Frank has taken steps to verify this information, we advise you to confirm the details of any such material information prior to any offer being submitted. If we are informed of changes to this information by the seller or another third party, we will use reasonable endeavours to update this as soon as practical. 3. Photos, Videos etc: The photographs, property videos and virtual viewings etc. show only certain parts of the property as they appeared at the time they were taken. Areas, measurements and distances given are approximate only. 4. Regulations etc: Any reference to alterations to, or use of, any part of the property does not mean that any necessary planning, building regulations or other consent has been obtained. A buyer must find out by inspection or in other ways that these matters have been properly dealt with and that all information is correct. 5. Fixtures and fittings: A list of the fitted carpets, curtains, light fittings and other items fixed to the property which are included in the sale (or may be available by separate negotiation) will be provided by the Seller's Solicitors. 6. VAT: The VAT position relating to the property may change without notice. 7. To find out how we process Personal Data, please refer to our Group Privacy Statement and other notices at <https://www.knightfrank.com/legals/privacy-statement>.

Particulars dated <Particularsdate>. Photographs and videos dated <Photodate>. All information is correct at the time of going to print. Knight Frank is the trading name of Knight Frank LLP. Knight Frank LLP is a limited liability partnership registered in England and Wales with registered number OC305934. Our registered office is at 55 Baker Street, London W1U 8AN. We use the term 'partner' to refer to a member of Knight Frank LLP, or an employee or consultant. A list of members names of Knight Frank LLP may be inspected at our registered office. If you do not want us to contact you further about our services then please contact us by either calling 020 3544 0692, email to [marketing.help@knightfrank.com](mailto:marketing.help@knightfrank.com) or post to our UK Residential Marketing Manager at our registered office (above) providing your name and address.

