



Park House

Richmond Hill, TW10

£4,500 per month
(£1,038.46 per week)

CHESTERTONS



Park House

Richmond Hill, TW10

- Private courtyard
- Over 1200 sq ft of accommodation
- Iconic Richmond Hill 'Turners' views towards Petersham and the river Thames
- Share of Freehold

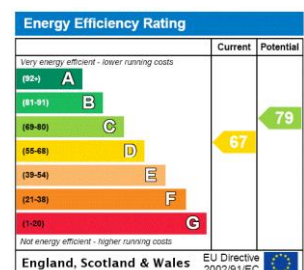


A stylish and spacious three bedroom maisonette in a very popular spot on Richmond Hill.

This stunning maisonette features 3 bedrooms and 2 bathrooms, including the primary bedroom with a very stylish en-suite bathroom. The reception room is spacious and bright with a stunning marble fireplace fire which houses a wood burner. The reception leads onto a separate dining area that has access to a fabulous and spacious courtyard which spans the length of the apartment and side access onto Friars Stile Road. The kitchen has integrated appliances and plenty of built in storage benefits from lots of light. The apartment has built-in storage and cupboards throughout and is presented in excellent condition. The property has been tastefully decorated to a very good standard and feels very welcoming. The property is very light and benefits from lots of natural daylight from the bay windows at the front.

The property is located on lower ground floor with private entrance of this very well run Share of Freehold

Minimum Term: 12 months
Deposit Required: 5 weeks
Local Authority: London Borough of Richmond upon Thames
Council Tax Band: G
EPC Rating: D

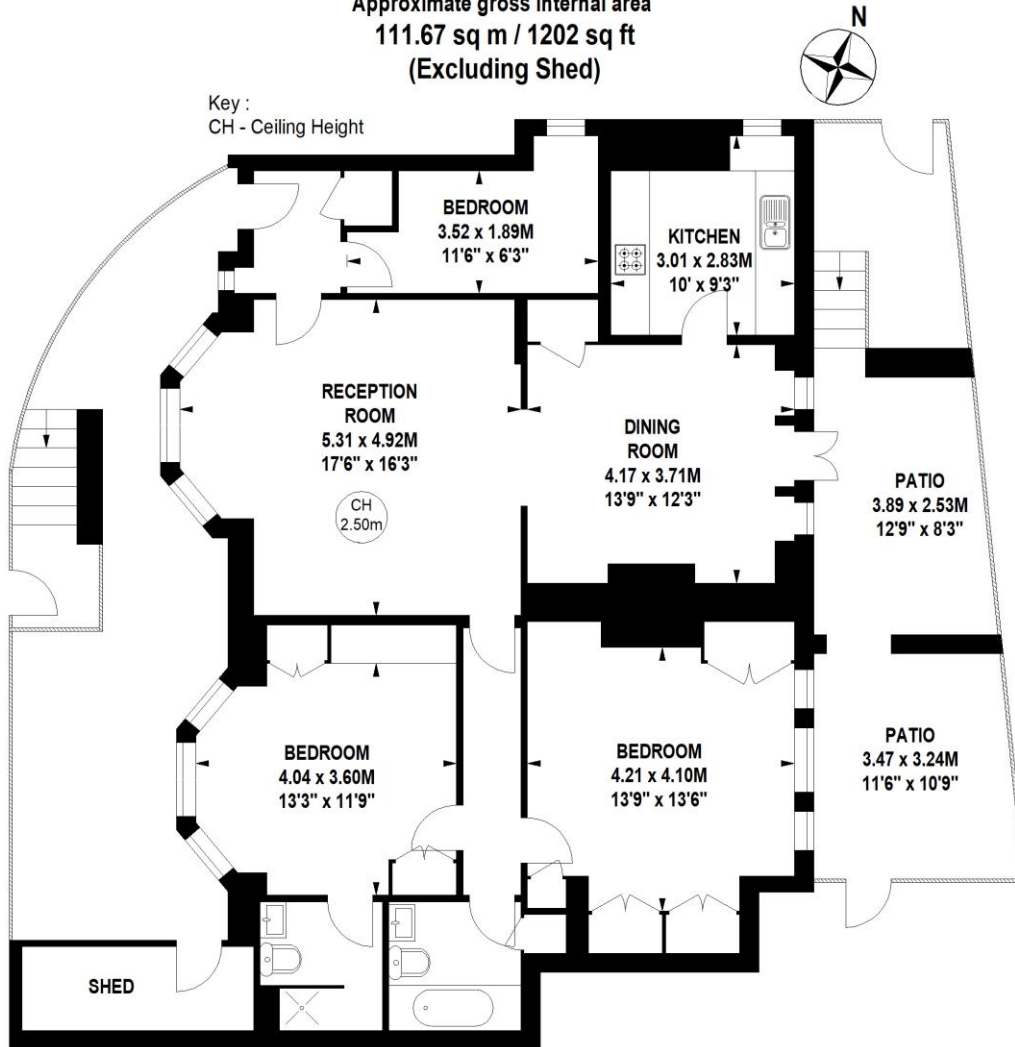


Chestertons Richmond Lettings

23a Friars Stile Road
 Richmond
 Surrey
 TW10 6NH
 richmondlettingsusers@chestertons.co.uk
 02037583333
 chestertons.co.uk

Park House, Richmond Hill, TW10

Approximate gross internal area
111.67 sq m / 1202 sq ft
(Excluding Shed)



Lower Ground Floor

Not to scale, for guidance only and must not be relied upon as a statement of fact.
All measurements and areas are approximate only

