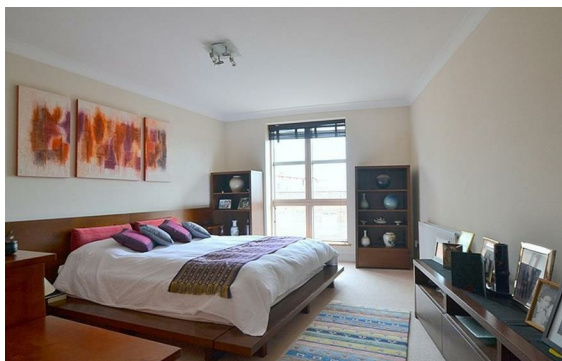




St. Johns Wood Road, St John's Wood, London, NW8 NW8 Rent £1,300 PCM

2 Bed | 2 Bath | 1 Reception

Please call us on 020 7724 2233 or email us info@newingtonstates.com to book a viewing.



Spacious apartment in a prestigious St John's Wood development. The property features a reception and dining room overlooking the communal gardens, a separate fitted kitchen, two well-proportioned bedrooms, two bathrooms (one en-suite), and a guest WC. Ample storage and a private balcony further enhance the comfort and functionality of the apartment.

Residents benefit from lift access, 24-hour porter service, and beautifully maintained communal gardens. Ideally located close to St John's Wood Station and Swiss Cottage Station, with Regent's Park and Primrose Hill nearby.

EPC Rating: C

Energy Efficiency Rating: C

Agents Note: Whilst every care has been taken to prepare these particulars, they are for guidance purposes only. All measurements are approximate and are for general guidance purposes only and whilst every care has been taken to ensure their accuracy, they should not be relied upon and potential buyers/tenants are advised to recheck the measurements.

NEWINGTON
— ESTATES —

60 Upper Montagu Street

London

W1H 1SN

020 7724 2233

info@newingtonstates.com

<http://www.newingtonstates.com>