



## SILVERWORKS CLOSE, NW9

£2,250 pcm

Situated on the fifth floor of the prestigious Silverworks development, this 768 sq/ft apartment features a designer interior with oak flooring. The space includes two double bedrooms, two modern bathrooms, and a private balcony.

- Modern Development
- Fifth Floor with Lift Access
- Two Bathrooms (One En-suite)
- Private Outdoor Balcony
- Northern Line Connections
- Approx. 768 SQFT Space

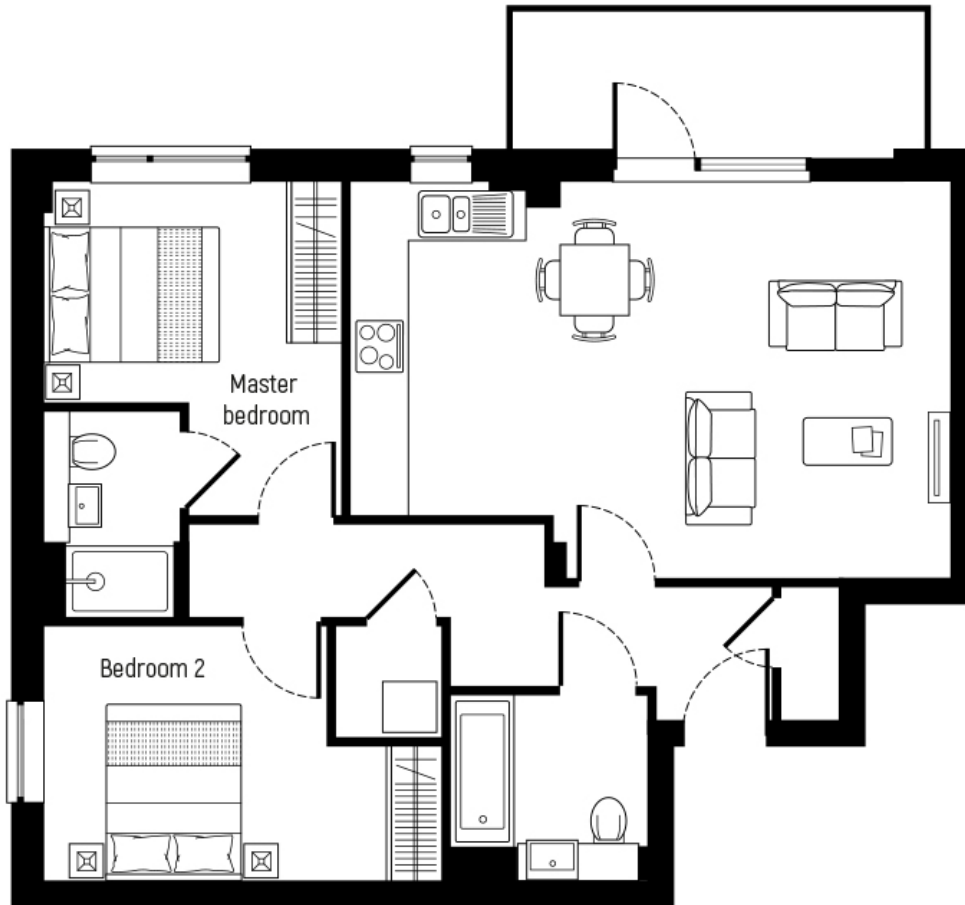


## ABOUT THE HOME

Located in a rapidly regenerating North London hub, this property is a 10-minute walk from Colindale Station. Residents enjoy easy Northern Line access, nearby communal landscaped gardens, and a variety of local shops.







Living/dining	4.7 x 4.4m	15'4" x 14'4"
Kitchen area	3.7 x 2.0m	12'1" x 6'6"
Master bedroom	3.9 x 2.8m	12'9" x 9'2"
Bedroom 2	3.3 x 3.7m	10'9" x 12'1"

Internal area	71.3 sq.m.	768 sq.ft.
External area	7.1 sq.m.	76 sq.ft.

**LiFE RESIDENTIAL**

203 Trentham Court, Victoria  
Road, London, W3 6BT  
Sales: 020 3668 1112  
Lettings: 020 3668 1111

Energy Rating: B. We aim to make our particulars both accurate and reliable. However they are not guaranteed; nor do they form part of an offer or contract. If you require clarification on any points then please contact us, especially if you're traveling some distance to view. Please note that appliances and heating systems have not been tested and therefore no warranties can be given as to their good working order.