



William Morris Way, SW6

£750 Per week

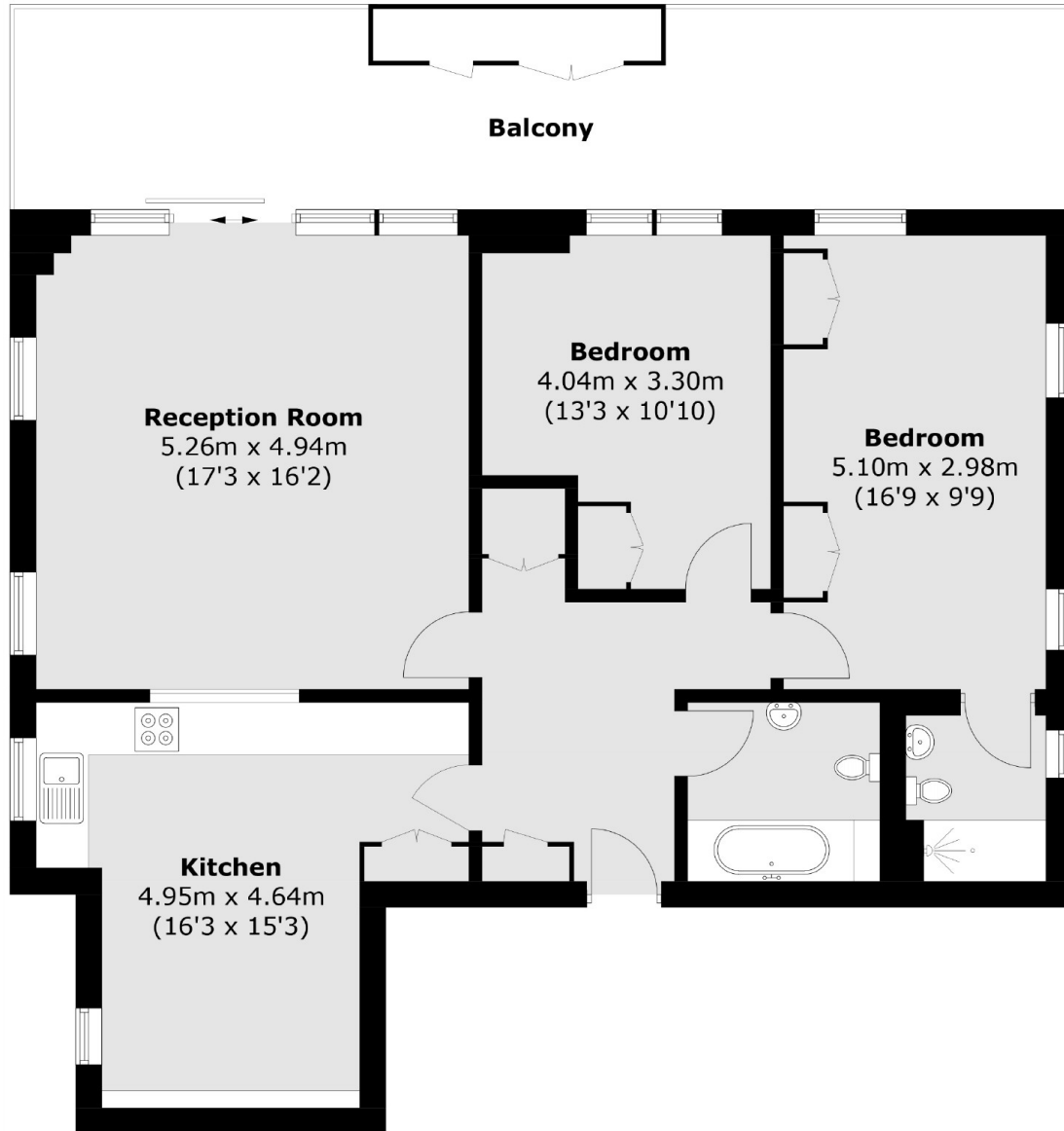
A beautifully presented two double bedroom, two bathroom apartment with direct views of the River Thames from the private balcony.

Located on the north side of the River Thames, William Morris Way is in close proximity to Imperial Wharf station and local amenities.

Features

- Two Double Bedrooms
- Two Bathrooms
- Concierge Service
- River Views
- Private Balcony
- Parking

William Morris Way, London, SW6



Total area (approx.): 93.4 sq. m (1005.3 sq. ft)