

SIGNATURE

NORTH EAST

OFFICIALLY RATED THE NO.1 ESTATE AGENT IN THE NORTH EAST





📍 Tranwell Woods, Morpeth NE61 6AG

Tranwell Woods Morpeth NE61 6AG

Offers Over £2,999,999

Welcome to The Woodlands – an exquisite six-bedroom detached mansion nestled on an exclusive private road in the prestigious Tranwell Woods. This extraordinary home has been meticulously designed and renovated to the highest standard, where no expense has been spared. Boasting opulent interiors, state-of-the-art technology, and beautifully landscaped grounds, The Woodlands is a masterpiece of modern luxury.

With advanced heating systems, CAT 7 internal wiring, and a Bang & Olufsen audio-visual setup, the property features cutting-edge functionality throughout, including a cinema and games room. Enclosed by electric gates, the property is fully secured with a comprehensive CCTV system and enjoys a tranquil woodland setting. A grand driveway, flanked by four sandstone pillars, leads to the elegant front façade, where double doors open into an impressive reception hall.

Inside, the property offers an abundance of light-filled living spaces, including two formal reception rooms at the front of the house. The heart of the home is a stunning open-plan kitchen, dining, and family area with a south-facing aspect, ideal for entertaining. Every detail has been carefully considered, from the double-unit Aga with modular ovens to the integrated Siemens appliances, including a coffee machine, microwave/oven, and dishwasher. Adjacent to the dining area, a cozy snug overlooks the expansive rear grounds. Double doors lead to the spectacular leisure suite, which features a 10m x 5m swimming pool, steam room, sauna, jacuzzi, and changing facilities, complemented by a mezzanine seating area. Completing the ground floor are a large utility room, two W.C.s, and a pantry.

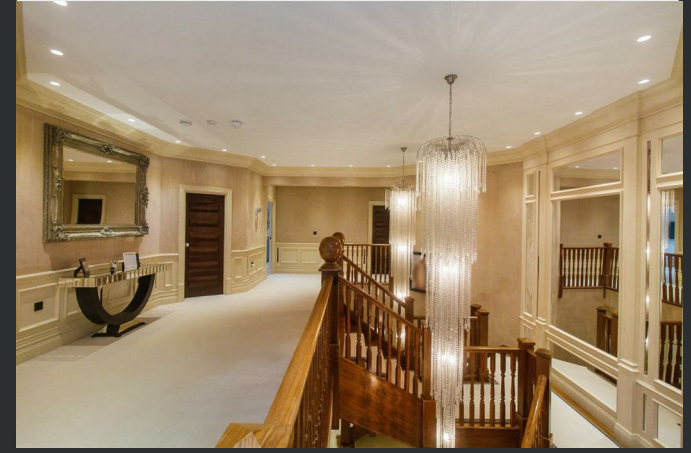
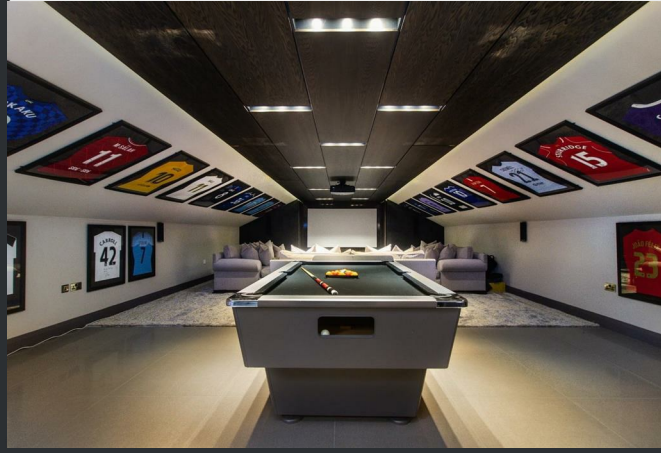
A striking solid walnut staircase, with bespoke Italian chandeliers, ascends to the first floor, where five double bedrooms each feature private en-suites and walk-in wardrobes await.

The expansive primary suite enjoys breathtaking views of the southern aspect and includes a luxurious four-piece en-suite with a freestanding bath, double waterfall shower, and jets, as well as a walk-in dressing room with bespoke fitted units. The leisure suite is conveniently accessible from the primary bedroom. A cinema/games room offers a state-of-the-art projector and ample seating, while a separate hallway leads to a study and a hidden staircase to the second floor. This top floor serves as a self-contained annex, complete with a spacious bedroom, an open en-suite with a marble double shower and freestanding tub, and an adjoining living area with a kitchen and dining space.

The rear grounds are equally impressive, with a summer house currently used as a gym and a large patio area spanning the width of the property, perfect for outdoor entertaining. Surrounded by mature trees and landscaped gardens, this private oasis provides unparalleled tranquility and elegance.

The Woodlands is truly a dream home that combines luxury living with cutting-edge design in an idyllic location.



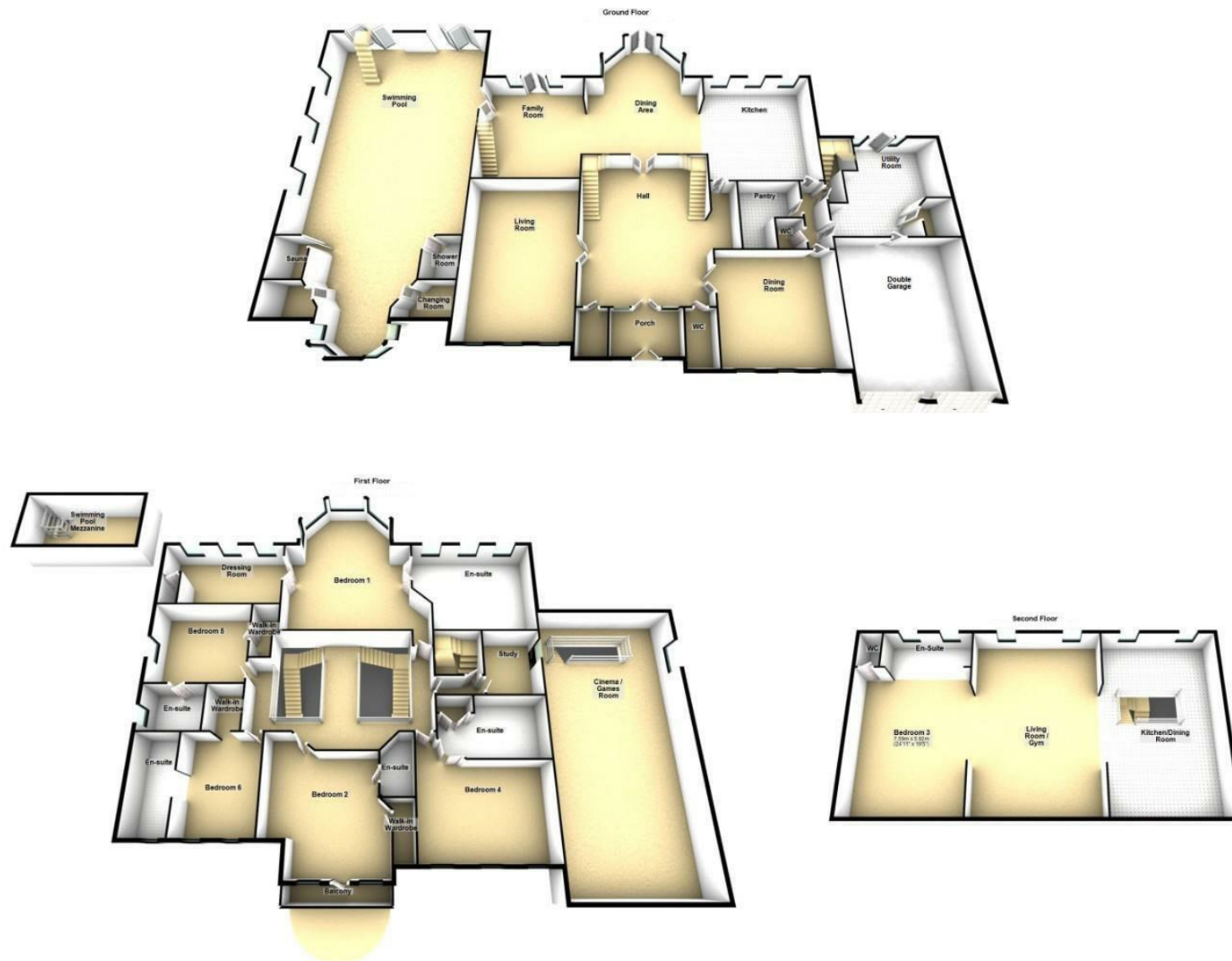


Why Signature?

Signature North East reach 150,000 per month on social media. We cover 19 locations in the North East. At signature we keep our doors open from 8AM - 8PM, when other estate agents are closed. We are a customer 5 star rated agent on allagents.co.uk. With a dedicated group of negotiators across the region, to the 'behind the scenes' Head Office team, each member of staff is passionate about the industry and cares about every client; you're at the heart of everything we do!

PLEASE NOTE THAT THE VENDOR HAS CERTIFIED THE PROPERTY INFORMATION AND IMAGES.

PROPERTY FLOORPLAN



EPC RATING: B



More 5 Star Customer Reviews than any other Agent based in the North East on [allAgents.co.uk](https://allagents.co.uk)



SALES

LETTINGS

FINANCE

LAW

WE COVER THE WHOLE OF THE NORTH EAST

Whitley Bay
0191 251 3344

Cramlington
01670 897 213

Tynemouth
0191 296 6689

Morpeth
01670 513 966

Ponteland
01661 820 082

Wallsend
0191 432 4151

Alnwick
01665 511 800

Heaton
0191 432 4275

Forest Hall
0191 266 9966

Other locations
0191 640 3523

Newcastle
0191 640 2284

Durham
0191 303 8252

Gosforth
0191 640 3523

Sunderland
0191 543 6390

Whickham
0191 432 5102

Gateshead
0191 432 4294

Jesmond
0191 281 1037

Killingworth
0191 640 3602

Ryton
0191 413 9845

Head Office &
Lettings
0191 253 4815

*Highest recommended 5-star reviews than any other Estate Agent based in the North East on [allAgents.co.uk](https://allagents.co.uk) - The UK's Largest Customer Review Website for the Property Industry & Awarded Best Estate Agency 2018 & 2019 - North East England by SME News