



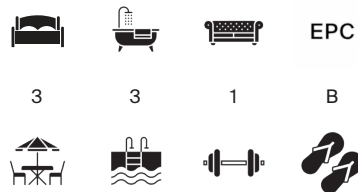
LINCOLN SQUARE

Covent Garden WC2A



LUXURY LIVING ABOVE LONDON

This is a beautifully appointed residence set within one of the West End's most prestigious modern developments, offering exceptional lateral space and a private roof terrace with panoramic City views.



Local Authority: City of Westminster

Council Tax band: H

Tenure: Leasehold, approximately 992 years remaining

Service charge: approximately £21,125 per annum

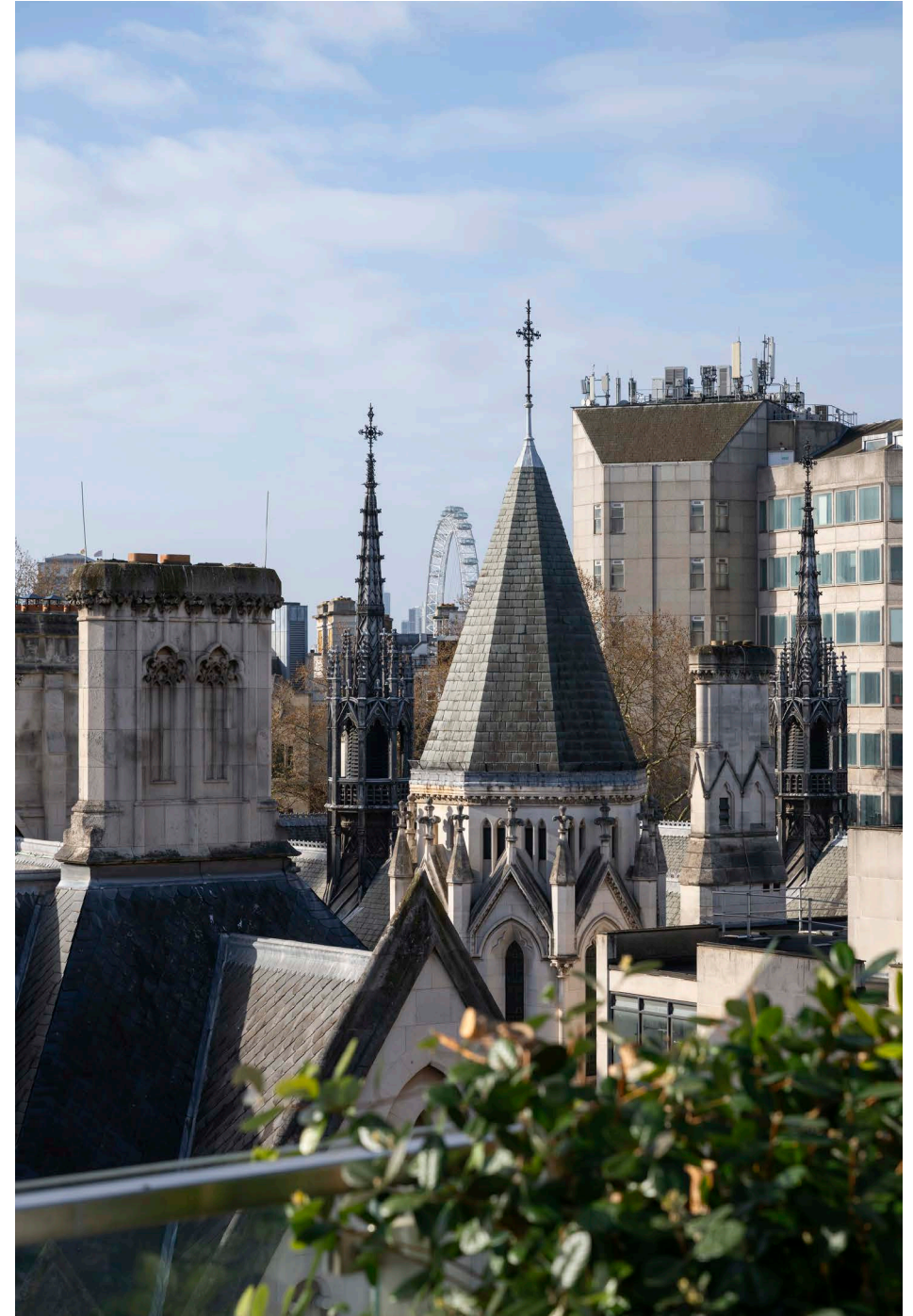
Guide price: £7,250,000



LINCOLN SQUARE, COVENT GARDEN WC2A

Located within Lincoln Square, 18 Portugal Street, the development was created by Lodha Group and completed in 2020, forming part of a landmark transformation of the former New Court office building at 48 Carey Street into an exclusive residential enclave. The scheme comprises 221 luxury homes by celebrated architects PLP Architecture, with interiors by acclaimed designer Patricia Urquiola, and an impressive suite of five-star amenities totalling over 17,000 sq ft, including a 25-metre swimming pool, gym, cinema, private dining rooms, spa facilities and a residents' club room. Residents also enjoy access to a 6,000 sq ft landscaped courtyard garden designed as a peaceful urban retreat.

The apartment further benefits from a secure underground parking space and a private storage room located in the basement, providing valuable additional convenience and functionality.







Positioned on one of the upper levels, this flat stands out for its rare expansive roof terrace, offering a substantial private outdoor space seldom found in central London. The interior layout is refined, with beautifully executed contemporary finishes, generous entertaining spaces, and three well-proportioned bedrooms, each with its own bathroom. Floor-to-ceiling windows flood the home with natural light, enhancing the exceptional sense of openness.

This is a best-in-class apartment designed for modern luxury living, moments from London's legal, cultural and academic heartland.

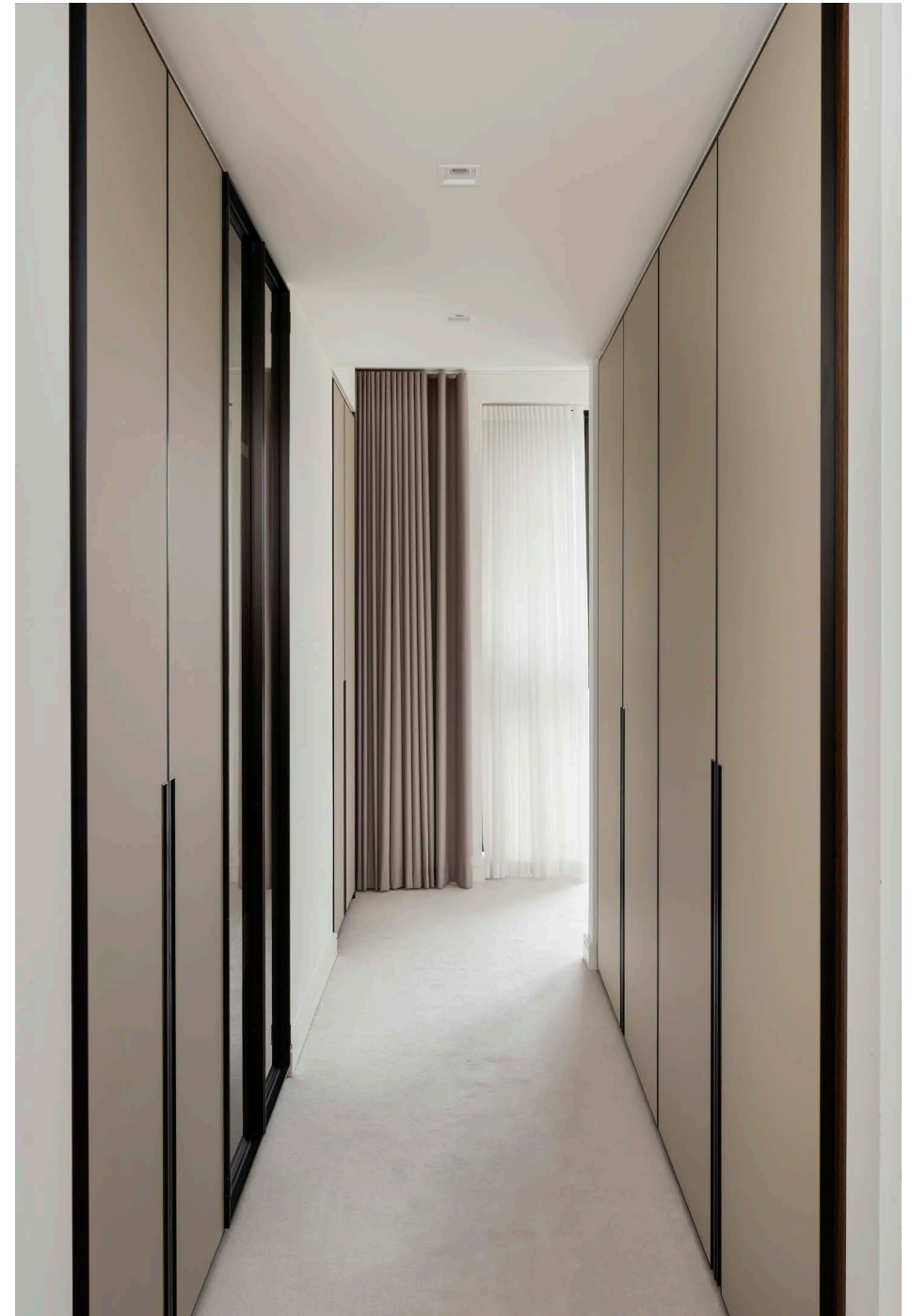


THE BEST OF LONDON AT YOUR DOORSTEP

Holborn is one of London's most historic and culturally rich neighbourhoods — positioned between the Royal Courts of Justice, the London School of Economics, and the grand green expanse of Lincoln's Inn Fields. Lincoln Square places you at the crossroads of legal London and some of the capital's most iconic cultural institutions. The area's historical streetscape forms part of a district renowned for its architecture, from the medieval Inns of Court to Georgian and Victorian terraces.

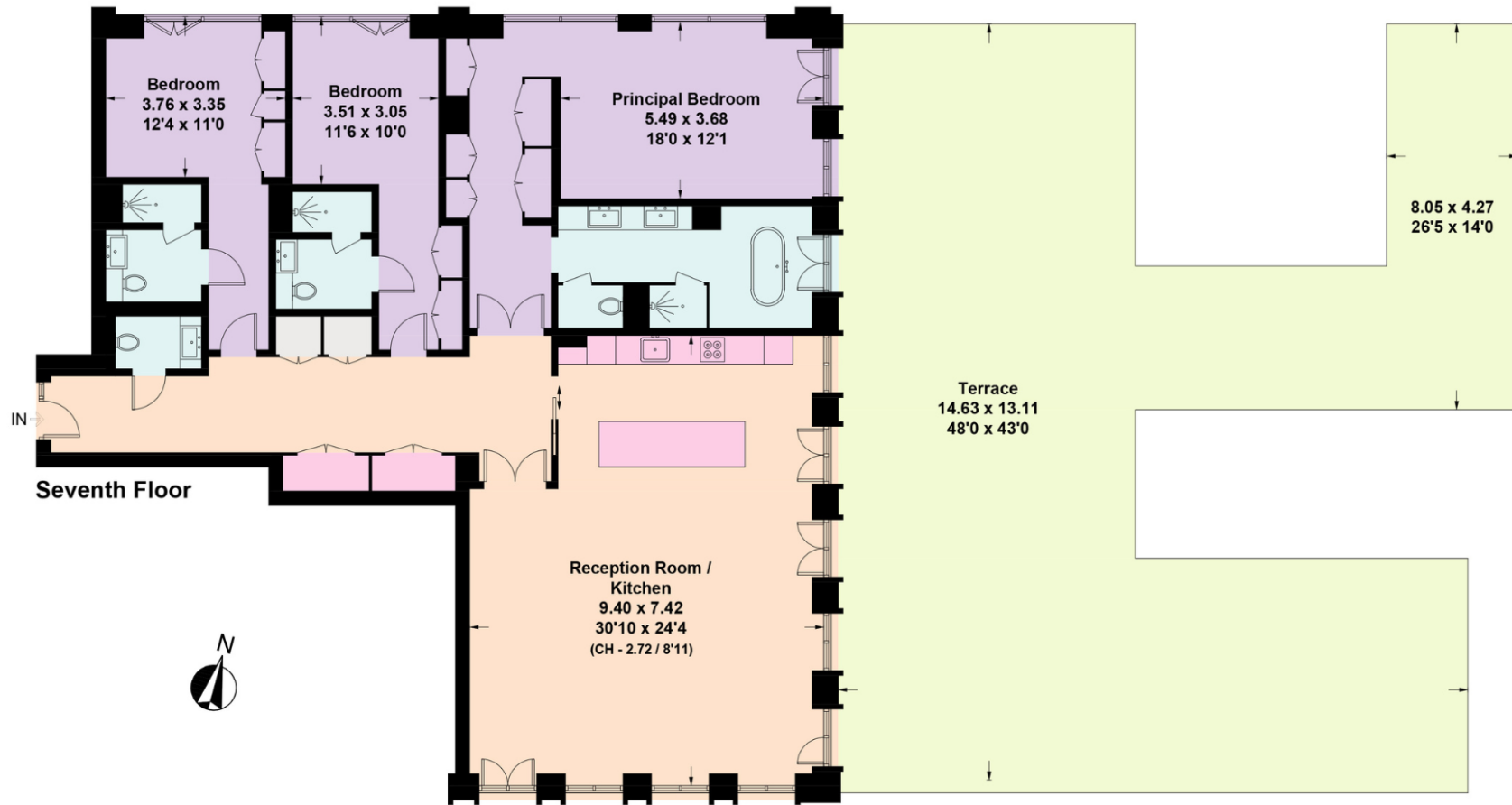
Food lovers benefit from being moments from some of Holborn's best-rated restaurants, from the grand brasserie Holborn Dining Room, known for its iconic pies and copper-topped gin bar, to celebrated neighbourhood favourites such as Noble Rot, a highly regarded wine-led restaurant praised for its seasonal, chef-driven British-European dishes. The wider Holborn and Bloomsbury area offers everything from refined European cuisine to modern Asian dining, ensuring residents are spoilt for choice.

Transport connectivity is superb: Chancery Lane, Holborn, and Temple Underground stations are all nearby. This exceptional connectivity, combined with the area's historic charm and vibrant dining scene, makes Lincoln Square one of the most desirable









Approximate Gross Internal Area = 190.2 sq m / 2,047 sq ft
 Approximate Total of the Outside Space = 172.8 sq m / 1,860 sq ft

This plan is for layout guidance only. Not drawn to scale unless stated. Windows and door openings are approximate. Whilst every care is taken in the preparation of this plan, please check all dimensions, shapes and compass bearings before making any decisions reliant upon them. (ID767266)

We would be delighted
to tell you more.

Jonathan Fieldman

020 7647 6615

jonathan.fieldman@knightfrank.com

Knight Frank Mayfair

44 South Audley Street

W1K 2PX

[knightfrank.co.uk](https://www.knightfrank.co.uk)

Your partners in property

1. Particulars: These particulars are not an offer or contract, nor part of one. You should not rely on statements given by Knight Frank in the particulars, by word of mouth or in writing ("information") as being factually accurate about the property, its condition or its value. Neither Knight Frank nor any joint agent has any authority to make any representations about the property, and accordingly any information given is entirely without responsibility on the part of Knight Frank. 2. Material Information: Please note that the material information is provided to Knight Frank by third parties and is provided here as a guide only. While Knight Frank has taken steps to verify this information, we advise you to confirm the details of any such material information prior to any offer being submitted. If we are informed of changes to this information by the seller or another third party, we will use reasonable endeavours to update this as soon as practical. 3. Photos, Videos etc: The photographs, property videos and virtual viewings etc. show only certain parts of the property as they appeared at the time they were taken. Areas, measurements and distances given are approximate only. 4. Regulations etc: Any reference to alterations to, or use of, any part of the property does not mean that any necessary planning, building regulations or other consent has been obtained. A buyer must find out by inspection or in other ways that these matters have been properly dealt with and that all information is correct. 5. Fixtures and fittings: A list of the fitted carpets, curtains, light fittings and other items fixed to the property which are included in the sale (or may be available by separate negotiation) will be provided by the Seller's Solicitors. 6. VAT: The VAT position relating to the property may change without notice. 7. To find out how we process Personal Data, please refer to our Group Privacy Statement and other notices at <https://www.knightfrank.com/legals/privacy-statement>.

Particulars dated March 2026. Photographs and videos dated March 2026. All information is correct at the time of going to print. Knight Frank is the trading name of Knight Frank LLP. Knight Frank LLP is a limited liability partnership registered in England and Wales with registered number OC305934. Our registered office is at 55 Baker Street, London W1U 8AN. We use the term 'partner' to refer to a member of Knight Frank LLP, or an employee or consultant. A list of members names of Knight Frank LLP may be inspected at our registered office. If you do not want us to contact you further about our services then please contact us by either calling 020 3544 0692, email to marketing.help@knightfrank.com or post to our UK Residential Marketing Manager at our registered office (above) providing your name and address.