



TO LET

Inverness Avenue, Westcliff-On-Sea SS0 9DY

£1,195 PCM Deposit Required - £1,378 Council Tax Band - A

- Two Bedroom Flat
- First Floor
- Electric Heating
- Modern Shower Room
- Freshly Decorated Throughout
- New Flooring Throughout
- Great Location
- Private Rear Garden
- Good Location
- Call Now To Arrange Access

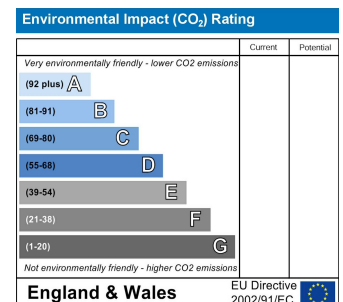
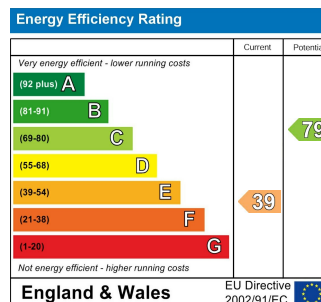
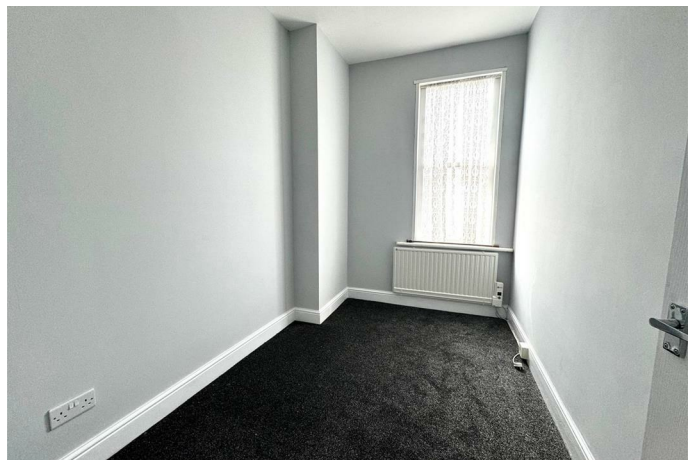
Appointmoor Rental
72 The Ridgeway, Chalkwell, Westcliff, Essex, SS0 8NU
T. 01702 719 966 W. appointmoor.co.uk

appointmoor

Description

Appointmoor are pleased to offer TWO BEDROOM FIRST FLOOR FLAT with access to a private garden to the rear. Freshly decorated throughout, recently laid carpet, large living room, one double bedroom and one single bedroom. This flat benefits from high ceilings, private rear garden accessed via a side gate, double glazing throughout and electric heating.

The shower room is modern with a large shower, w/c and sink. Call now to arrange a viewing.



AGENTS NOTES: Every care has been taken with the preparation of these particulars, but complete accuracy cannot be guaranteed. If there is any point, which is of particular importance to you, please obtain professional confirmation. Alternatively, we will be pleased to check the information for you. All measurements quoted are approximate. Floor plans are not to scale. The Fixtures, Fittings & Appliances have not been tested and therefore no guarantee can be given that they are in working order. Photographs are reproduced for general information, and it cannot be inferred that any item shown is included in the sale.

VIEWINGS: BY APPOINTMOOR ESTATES ONLY