



# Stowe Croft, Lichfield, WS13 6TW

£375,000

🛏️ 2 🪑 2 🚗 1



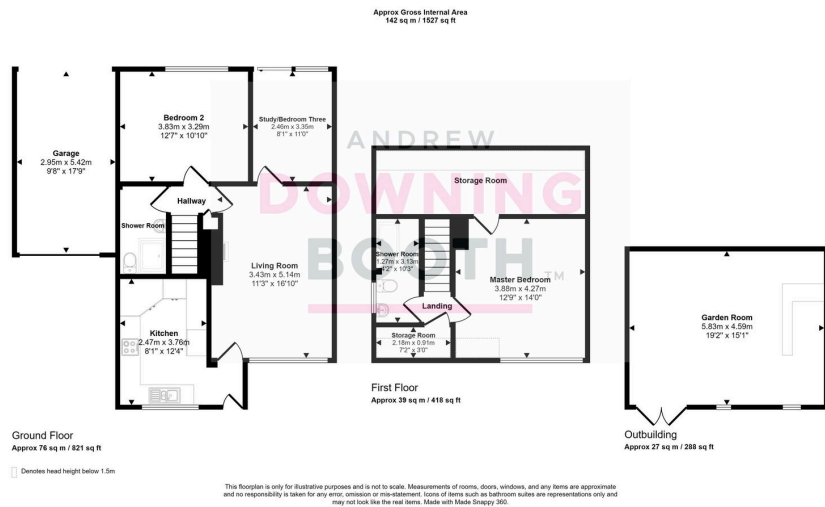
Situated in a popular Lichfield neighbourhood, this property offers three comfortable bedrooms, one bedroom offering versatile multi-purpose room – ideal for modern family living or working from home.

Stowe Croft is situated in a well-regarded residential area of Lichfield, offering a blend of peaceful living with convenient access to local amenities. Lichfield city centre, with its vibrant array of shops, cafes, restaurants, and leisure facilities, is just a short distance away. The area benefits from excellent transport links, including Lichfield City and Lichfield Trent Valley railway stations, providing direct services to major cities. Easy access to the A38 and A5 also ensures straightforward commuting. Local parks and green spaces are within easy reach, offering opportunities for outdoor activities. This ideal location provides a highly desirable lifestyle, combining a quiet neighbourhood feel with the convenience of city living.

The accommodation is thoughtfully arranged, beginning with a welcoming kitchen, leading to a spacious living/dining room perfect for both everyday enjoyment and entertaining. The ground floor also offers a spacious double bedroom, versatile study or third bedroom, and a contemporary bathroom. Upstairs, there is a further spacious double bedroom, and a modern bathroom, ensuring ample space. The property also benefits from a fantastic outbuilding, currently used as a games room, offering additional versatile space.

This exceptional property provides a superb opportunity to acquire a versatile and well-appointed home in a sought-after location – early viewing is highly recommended.





- Three Bedroom Detached Property
- Two Contemporary Style Bathrooms
- Ample Off-Road Parking & Carport
- Spacious Outbuilding/Games Room In Rear Garden
- EPC Rating: D
- Versatile Downstairs Third Bedroom/Study
- Great Location Close To Lichfield City Centre
- Beautifully Landscaped Rear Garden
- Ground Floor Double Bedroom
- Council Tax: C

