



Pinkmove

## Bryngwyn Road

Guide Price £300,000 - £315,000

- Guide Price £300,000 to £315,000
- Five well-proportioned bedrooms
- Three spacious reception rooms
- Modern fitted kitchen with integrated appliances
- Private, enclosed rear garden
- EPC Rating: D

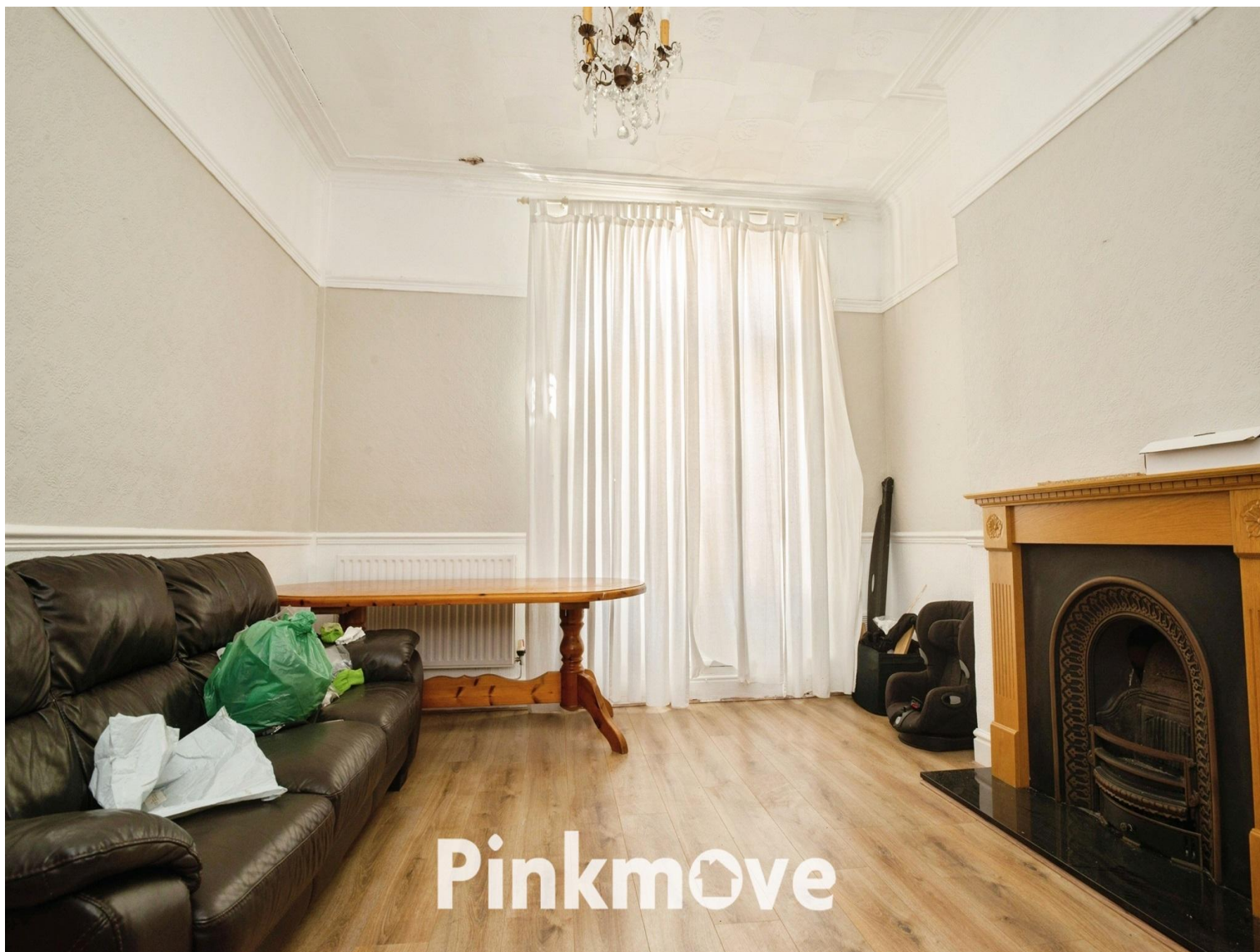


Pinkmove

5 1 3

Pinkmove

01633 746088  
team@pinkmove.co.uk

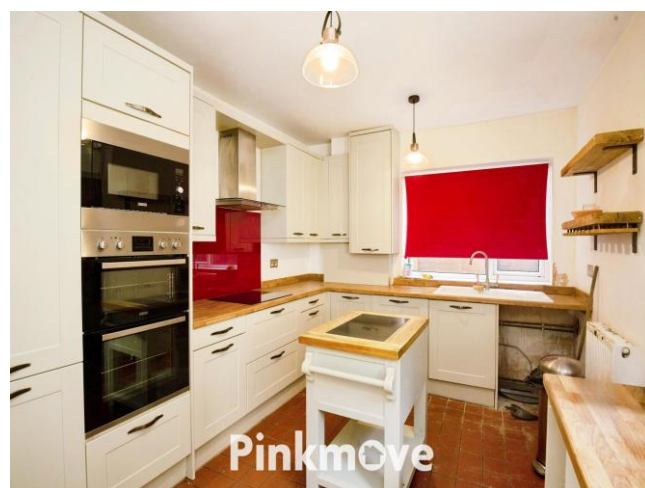


## About the property

We are delighted to present this beautifully presented and generously proportioned five-bedroom mid-terrace home, ideally situated on the popular Bryngwyn Road in Newport. Offering spacious and versatile accommodation, the property is conveniently located within easy reach of Newport City Centre, local amenities and the mainline train station, making it an excellent choice for commuters to Cardiff or Bristol. Well-regarded local schools and good road links are also close by.

To the front, the property benefits from a well-maintained garden featuring a generous lawn and a pathway leading to the main entrance. Upon entry, a spacious hallway provides access to three reception rooms and the staircase to the first floor. The main living room is light and welcoming, boasting a large bay-fronted window and a feature fireplace. The second reception room offers similar proportions and benefits from patio doors opening onto the rear garden, making it ideal as a dining or family room. To the rear, a third reception room seamlessly connects to the modern fitted kitchen, which offers ample storage, integrated appliances and access to a useful cloakroom.

To the first floor are five well-proportioned bedrooms and a contemporary family bathroom with a walk-in shower. Externally, the enclosed rear garden provides a private setting, featuring a courtyard area and a raised patio ideal for outdoor dining and entertaining.





## Accommodation

Lounge

Living Room

Dining Room

Kitchen

Wc

Bedroom 1

Bedroom 2

Bedroom 3

Bedroom 4

Bedroom 5

Shower Room

## Floorplan



Total floor area 160.5 sq.m. (1,727 sq.ft.) approx

This floor plan is for illustrative purposes only. It is not drawn to scale. Any measurements, floor areas (including any total floor area), openings and orientation are approximate. No details are guaranteed, they cannot be relied upon for any purpose and they do not form part of any agreement. No liability is taken for any error, omission or misstatement. A party must rely upon its own inspection(s). Powered by [www.localagent.com](http://www.localagent.com)

Pinkmove

## Important Information

Note while we endeavour to make our sales details accurate and reliable, if there is any point which is of particular interest to you, please contact the office and we will be pleased to confirm the position for you. We have not personally tested any apparatus, equipment, fixtures, fittings or services and cannot verify they are in working order or fit for their purposes. Nothing in these particulars is intended to indicate that carpets or curtains, furnishings or fittings, electrical goods (whether wired or not). Gas fires or light fittings or any other fixtures not expressly included form part of the property offered for sale. This computer generated Floorplan, if applicable, is intended as a general guide to the layout and design of the property. It is not to scale and should not be relied upon for dimensions. Tenure: We cannot confirm the tenure of the property as we have not had access to the legal documents. The buyer is advised to obtain verification from their solicitor or surveyor.

Peter Alan Limited is registered in England and Wales under company number 2073153, Registered Office is Cumbria House, 16-20 Hockliffe Street, Leighton Buzzard, Bedfordshire, LU7 1GN. VAT Registration Number is 500 2481 05. For activities relating to regulated mortgages and non-investment insurance contracts, Peter Alan Limited is an appointed representative of Connells Limited which is authorised and regulated by the Financial Conduct Authority. Connells Limited's Financial Services Register number is 302221. Most buy-to-let

