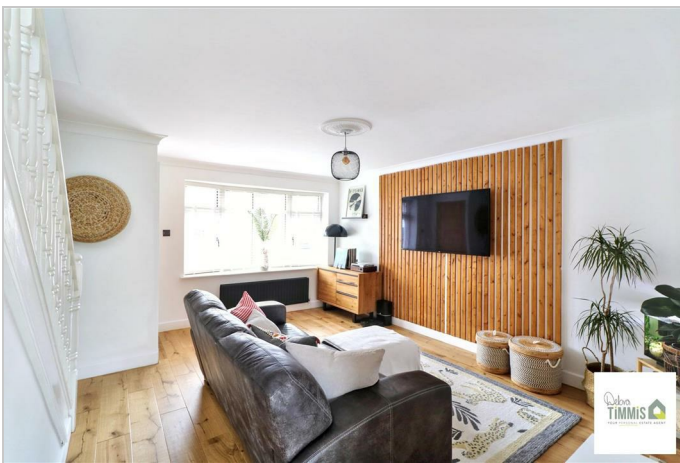
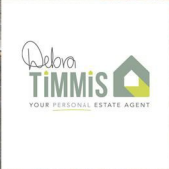


Dunsford Avenue Milton Stoke-On-Trent ST2 7PJ



Offers In The Region Of £225,000

Dunsford Avenue, Milton, Stoke-On-Trent, ST2 7PJ

The property of your dreams could be closer than you think
But be quick because it's sure to go in a blink
A THREE BEDROOM SEMI that's spacious all through
Perfect home if you are wanting somewhere to move straight into
Located in popular Milton with amenities all near
This property on Dunsford Avenue you will hold very dear
If it sounds like this property is right up your street
Call us to view and at the property we will meet!

Nestled in the sought-after area of Milton, this stunning semi-detached house on Dunsford Avenue is a true gem. The property boasts a welcoming entrance hallway that leads into a spacious lounge, perfect for both relaxation and entertaining. The stylish breakfast kitchen is a delightful space, ideal for enjoying morning meals with family or friends.

This charming home features three well-proportioned bedrooms, providing ample space for a growing family or guests. The contemporary shower room adds a modern touch, ensuring comfort and convenience. With double glazing and central heating throughout, you can enjoy a warm and inviting atmosphere all year round.

Outside, the property offers ample off-road parking, a valuable asset in this popular location. The delightful rear garden is a wonderful retreat, perfect for outdoor gatherings, gardening, or simply unwinding in the fresh air.

With its close proximity to local amenities, this semi-detached house is not only a beautiful home but also a practical choice for everyday living. Viewing is highly recommended to fully appreciate all that this property has to offer. Don't miss the opportunity to make this beautiful house your new home.

Entrance Hallway

Upvc door to the front aspect. Radiator. Tiled floor.

Lounge

15'5" x 14'5" (4.71 x 4.41)

Double glazed bow window to the front aspect. Radiator. Stairs off to the first floor. Useful storage cupboard housing central heating boiler. Stairs off to the first floor.

Breakfast Kitchen

14'6" x 8'3" (4.43 x 2.53)

Beautifully presented fitted kitchen with a range of wall mounted units, worktops incorporating drawers

and cupboard below. Integral fridge and dishwasher. Built-in oven and extractor hood. Inset sink. Breakfast bar. Plumbing for automatic washing machine. Double glazed windows and double glazed French doors with access into the rear garden. Inset ceiling spot lights.



First Floor

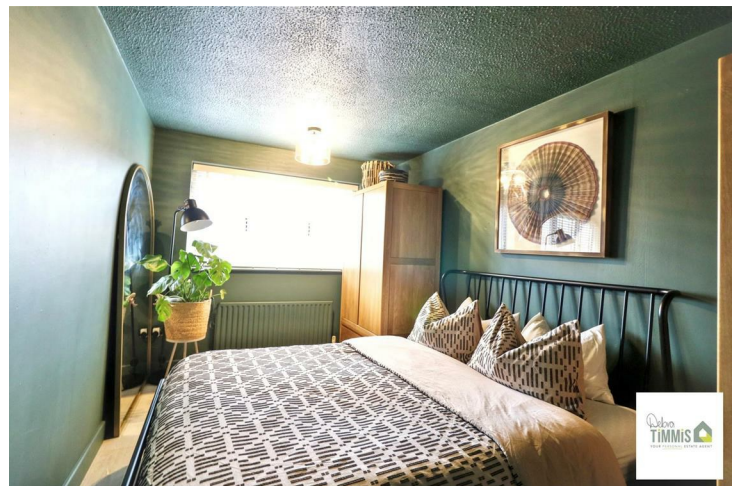
Landing

Double glazed window. Loft access.

Bedroom One

14'0" x 8'2" (4.28 x 2.51)

Double glazed window. Radiator.



Bedroom Two

10'1" x 8'0" (3.08 x 2.45)

Double glazed window. Radiator.



parking. Gated access to the enclosed rear garden having patio seating areas. Artificial lawn garden. Enclosed by fencing.

Bedroom Three

6'10" plus recess x 6'1" (2.10 plus recess x 1.86)

Double glazed window. Radiator.

Shower Room

6'1" x 5'11" (1.86 x 1.81)

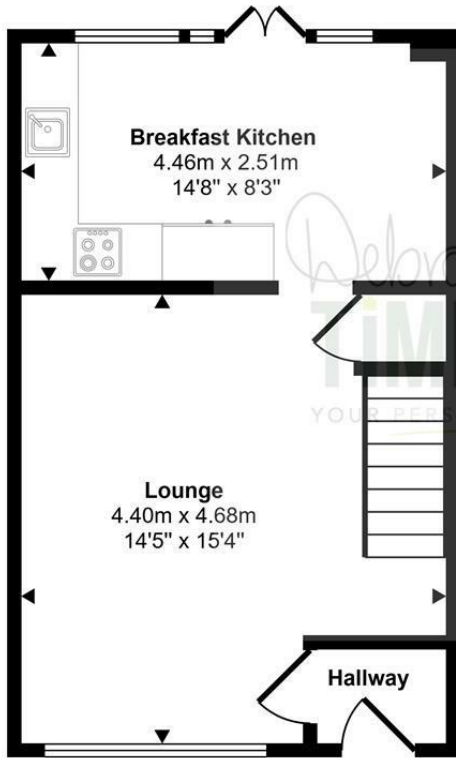
Stylish suite comprises, shower cubicle housing mains shower with waterfall shower head, vanity wash hand basin and low level WC. Heated towel rail. Double glazed window.

Externally

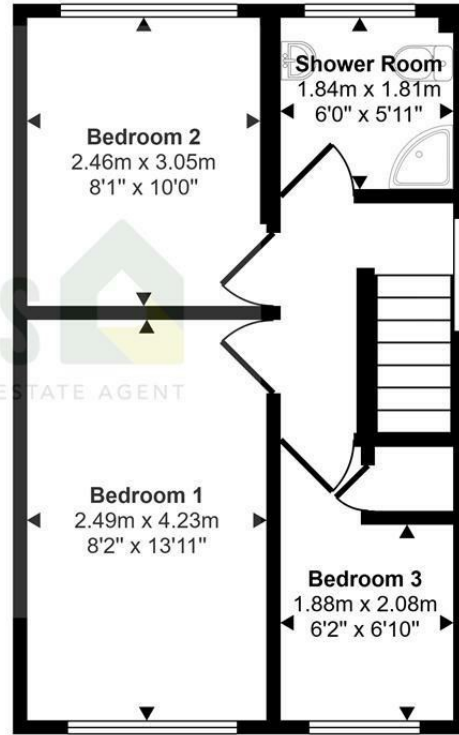
Low maintenance frontage with cobbled effect pressed concrete driveway providing ample off road



Approx Gross Internal Area
67 sq m / 717 sq ft

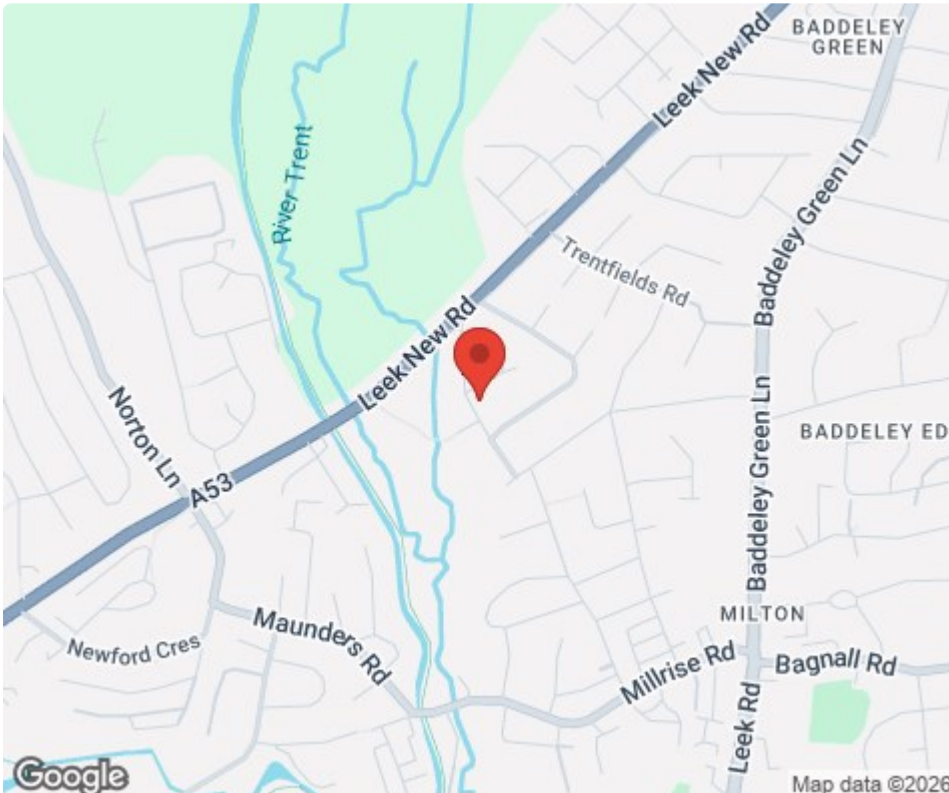


Ground Floor
Approx 33 sq m / 355 sq ft



First Floor
Approx 34 sq m / 362 sq ft

This floorplan is only for illustrative purposes and is not to scale. Measurements of rooms, doors, windows, and any items are approximate and no responsibility is taken for any error, omission or mis-statement. Icons of items such as bathroom suites are representations only and may not look like the real items. Made with Made Snappy 360.



Tenure: Freehold
Council Tax Band:

Energy Efficiency Rating		
	Current	Potential
Very energy efficient - lower running costs		
(92 plus) A		
(81-91) B		87
(69-80) C	70	
(55-68) D		
(39-54) E		
(21-38) F		
(1-20) G		
Not energy efficient - higher running costs		
England & Wales	EU Directive 2002/91/EC	

Debra Timmis Estate Agents for themselves and for the vendors or lessors of this property whose agents they are give notice that (i) the particulars are set out as a general outline only for the guidance of intending purchasers or lessees, and do not constitute, nor constitute part of an offer or contract; (ii) all descriptions, dimensions, references to condition and necessary permissions for use and occupation, and other details are given without responsibility and intending purchasers or tenants should not rely on them as statements or representations of fact but must satisfy themselves by inspection or otherwise as to the correctness of each of them; (iii) no person in the employment of Debra Timmis Estate Agents has any authority to make or give any representation or warranty whatsoever in relation to this property.