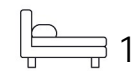




Living  
made  
better

Ardennes House  
Royal Victoria Dock, E16 1HL



Asking Price £290,000

# Ardennes House, Royal Victoria Dock, E16 1HL

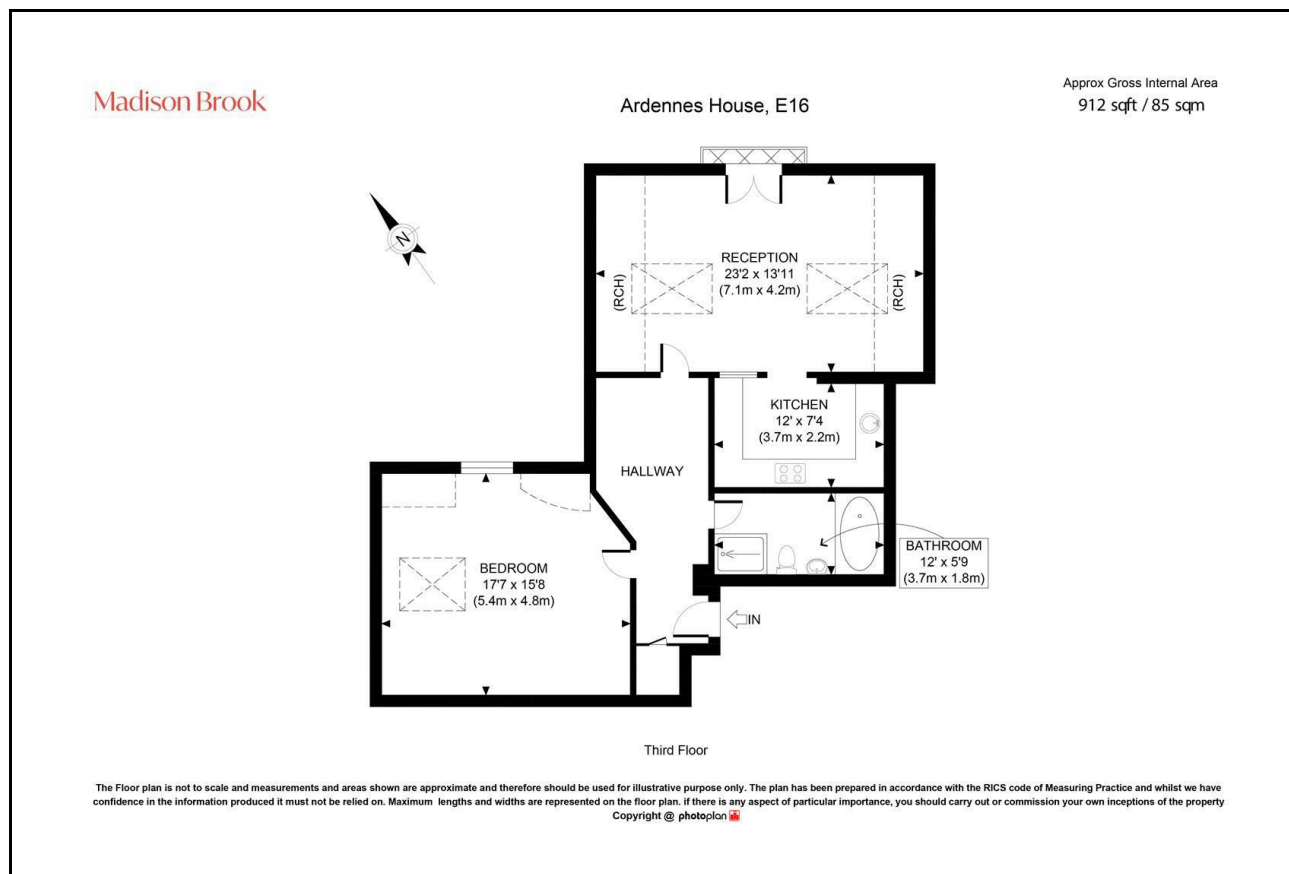
Madison Brook

## Property Summary

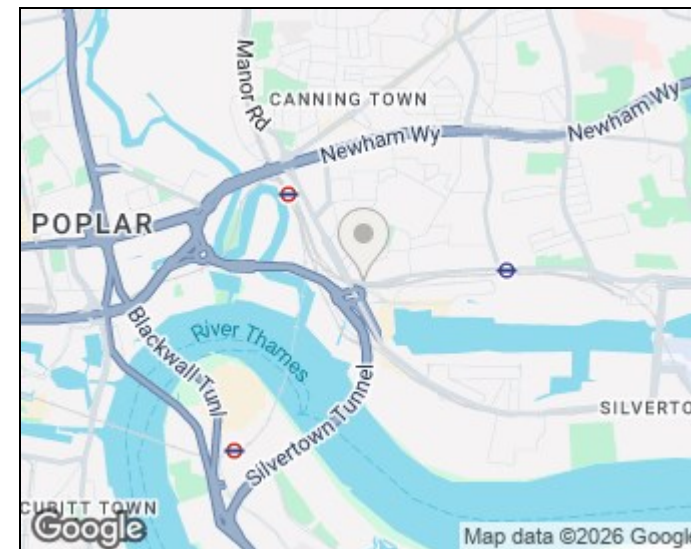
A substantial top floor one-bedroom apartment extending to approximately 912 sq.ft., set within a secure gated development in E16. The property features an impressive reception room with high vaulted ceilings, separate kitchen, generous double bedroom and family bathroom, together with a Juliette balcony and allocated parking.

Ideally located within walking distance of Royal Victoria DLR, Custom House (Elizabeth Line) and Canning Town Underground.

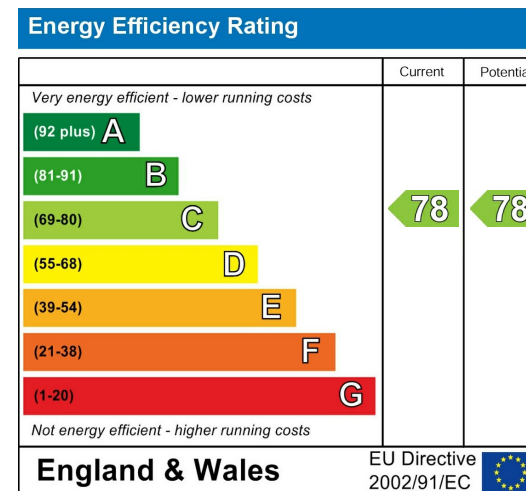
## Floorplan



## Area Map



## Energy Efficiency Graph



These particulars, whilst believed to be accurate are set out as a general outline only for guidance and do not constitute any part of an offer or contract. Intending purchasers should not rely on them as statements of representation of fact, but must satisfy themselves by inspection or otherwise as to their accuracy. No person in this firm's employment has the authority to make or give any representation or warranty in respect of the property.

Unit B 20 Western Gateway, Royal Victoria  
Dock, London, E16 1BS  
Tel: 020 3946 6000 Email:  
docklands@madisonbrook.com  
<https://madisonbrook.com/>