



Porchester Gate
Bayswater Road, W2





An exceptional, newly refurbished four-bedroom lateral apartment positioned on the top floor of this sought-after purpose-built block, boasting uninterrupted views across Hyde Park.

Arranged over a generous footprint and accessed by lift, the property has been thoughtfully designed to offer both comfort and style, making it particularly well-suited to families who enjoy entertaining. The accommodation features an elegant, light-filled reception room, a contemporary fully-fitted kitchen with gas hob, four well-proportioned bedrooms with bespoke built-in storage, two luxurious bathrooms and a separate guest cloakroom.

Perfectly positioned on Bayswater Road, Porchester Gate enjoys a truly enviable location directly opposite Hyde Park. Residents are within walking distance of the boutiques and cafés of Connaught Village, the vibrant amenities of Queensway, and the world-class shopping of Oxford Street. Excellent transport connections are close by, with Lancaster Gate Underground Station just moments away and Paddington Station within easy reach, offering both national rail and the Heathrow Express.

- Four bedrooms and two bathrooms
- Hyde Park views
- 6th floor with lift
- 24/7 porter
- Unfurnished
- Wooden flooring

£6,950 pcm

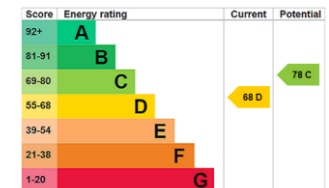
Additional tenant charges apply (fees apply to non-AST tenancies only)

Tenancy Agreement Fee: £300

References per Tenant/Guarantor: £60

Inventory check (approx. £100 – £250 inc. VAT)

[chestertons.co.uk/property-to-rent/applicable-fees](https://www.chestertons.co.uk/property-to-rent/applicable-fees)

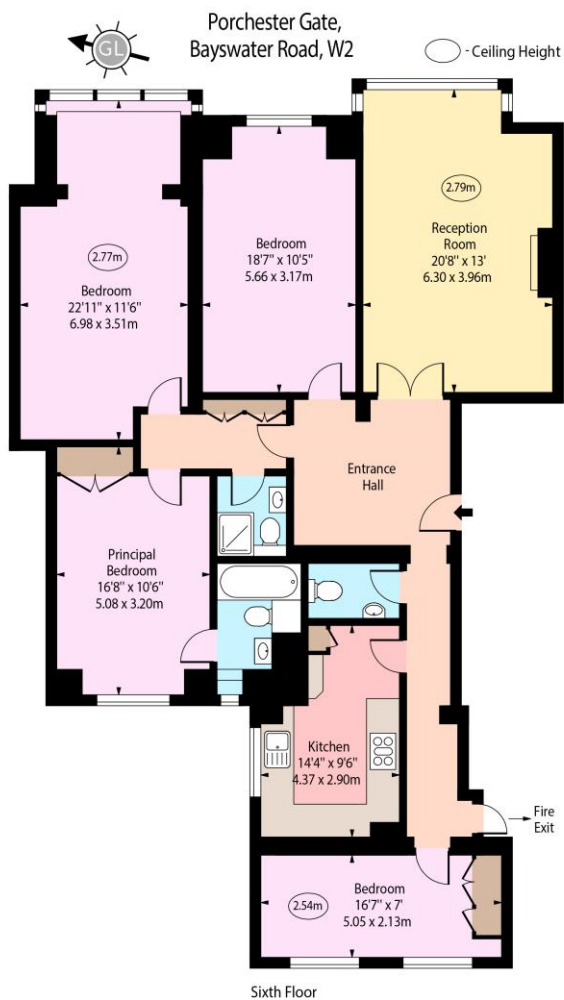


Minimum Term: 12 months
Deposit Required: Five weeks
Local Authority: City of Westminster
Council Tax Band: H
EPC Rating: D
Unfurnished

Chestertons Hyde Park & Marylebone Lettings

40 Connaught Street
 Hyde Park & Marylebone
 London
 W2 2AB

hydeparklettingsusers@chestertons.co.uk
 02072985950



Approx Gross Internal Area 1500 Sq Ft - 139.35 Sq M

Every attempt has been made to ensure the accuracy of the floor plan shown.
However, all measurements, fixtures, fittings, and data shown are approximate interpretations and
for illustrative purposes only. Measured according to the RICS. Not To Scale.
www.goldens.co.uk
Ref. No. 029265E

Chesterton UK Services Limited trading as Chestertons for themselves and for the vendor of this property whose agents they are, give notice that (i) these particulars do not constitute any part of an offer or contract, (ii) all statements contained within these particulars are made without responsibility on the part of Chestertons or the vendor, (iii) whilst made in good faith, none of the statements contained within these particulars are to be relied upon as a statement or representation of fact, (iv) any intending purchasers must satisfy themselves by inspection or otherwise as to the correctness of each of the statements contained within these particulars, (v) the vendor does not make or give either Chestertons or any person in their employment any authority to make or give representation or warranty whatsoever in relation to this property. Wide angle lenses may be used. ©Copyright Chestertons | Chesterton Global Ltd | Registered Office 40 Connaught Street, Hyde Park, London W2 2AB Registered Company Number 05334580.

