



**Guide Price**  
**£325,000**

**Leasehold**

2x  2x  1x 

**Royal Crescent, Kings  
Hill, Kent, ME19**

*Wards*  
Helping you move forwards



## Main features

- Spacious first floor apartment
- Beautifully presented with well planned accommodation
- Close to all of Kings Hill's various local amenities
- Allocated parking space
- Handy bike store

## Accommodation

### FIRST FLOOR

Entrance Hall

Kitchen: 9'8 x 7'10 (2.95m x 2.39m)

Lounge/Diner: 20'9 x 16'5 (6.33m x 5.01m)

Bedroom 1: 15'6 x 10'6 (4.73m x 3.20m)

En-Suite Shower Room

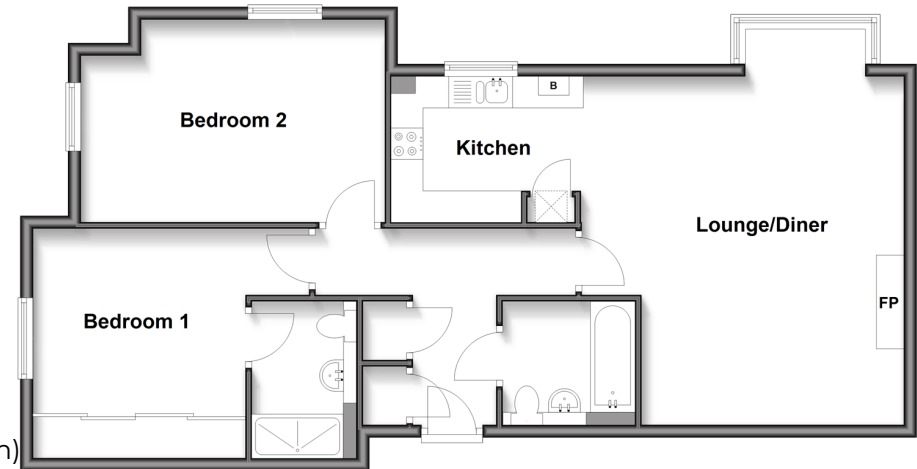
Bedroom 2: 14'2 x 10'3 (4.32m x 3.13m)

Bathroom

### OUTSIDE

Allocated Parking

**First Floor**  
Approx. 80.8 sq. metres (870.0 sq. feet)



**Call Kings Hill - 01732 22211 ■ [wardsof Kent.co.uk](http://wardsof Kent.co.uk)**

- Legal advice should be taken to verify fixtures/fittings, planning, alterations and/or lease details
- Appliances & services are untested, dimensions are approximate and floor plans are not to scale



12405113/20251030/SW/WA