



# HARDINGS




Oxford Road  
Offers Over £500,000



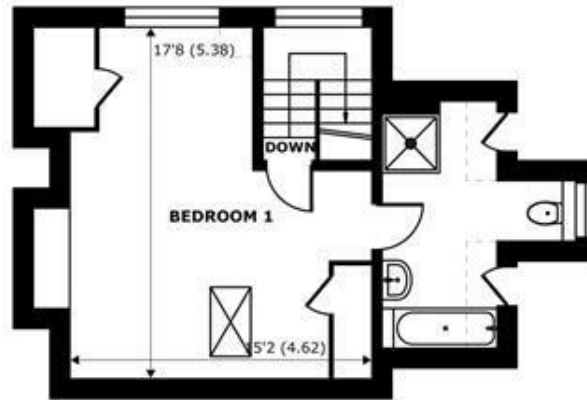


A superb 3 bedroom conversion maisonette offering spacious accommodation with delightful secluded south facing roof terrace. Re-furbished by the current owner the property is situated within walking distance of the High Street and with the added benefit of a single garage with electric door.

Energy Efficiency Rating		
	Current	Potential
<i>Very energy efficient - lower running costs</i>		
(92 plus) <b>A</b>		
(81-91) <b>B</b>		
(69-80) <b>C</b>		
(55-68) <b>D</b>		
(39-54) <b>E</b>	57	66
(21-38) <b>F</b>		
(1-20) <b>G</b>		
<i>Not energy efficient - higher running costs</i>		
<b>England &amp; Wales</b>	EU Directive 2002/91/EC 	

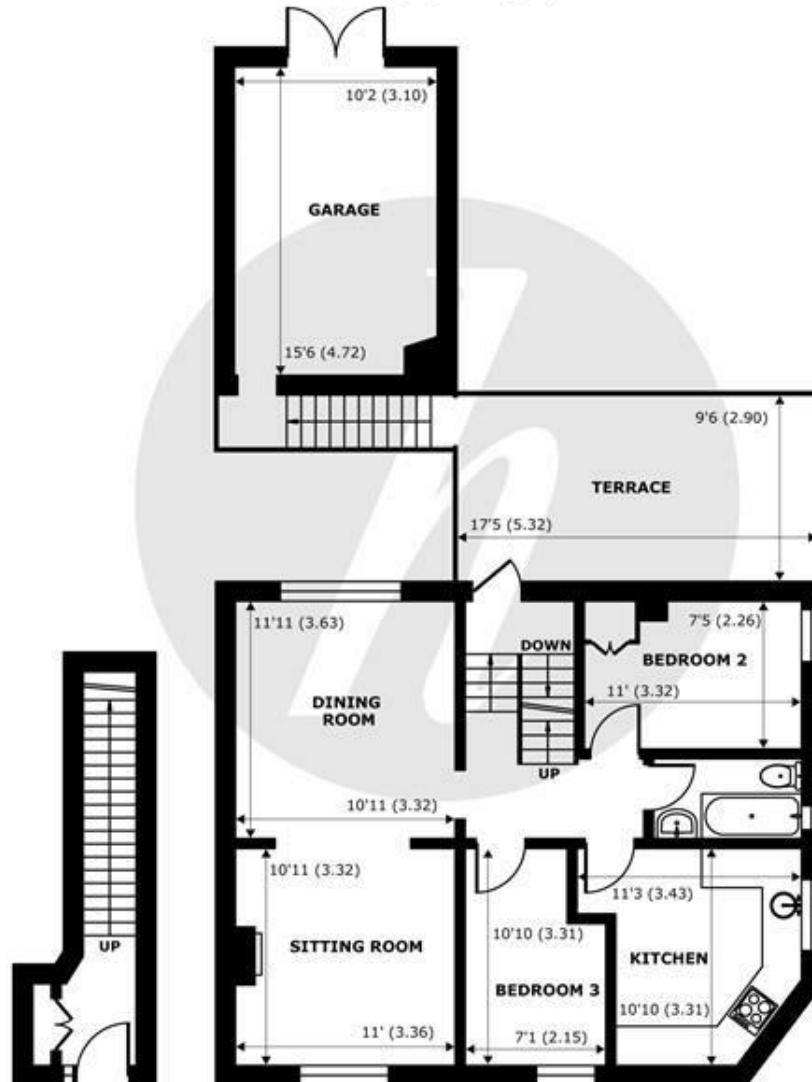
## Features

- Split level maisonette
- Re-fitted kitchen & bathroom
- Single garage with electric roller door
- Ensuite bathroom
- Large sitting/dining room
- Central location
- South facing roof terrace
- Share of freehold



Denotes restricted head height

**SECOND FLOOR**  
abt 472 SQFT (43.8 SQMT)



**GROUND FLOOR**  
abt 116 SQFT (10.7 SQMT)

**FIRST FLOOR**  
abt 757 SQFT (70.3 SQMT)

## Oxford Road, Windsor, SL4

Approximate Internal Area = 1076 sq ft / 1076 sq m (Exclude Garage & Outbuildings)

Approximate External Area = 1345 sq ft / 1345 sq m (Exclude Garage & Outbuildings)

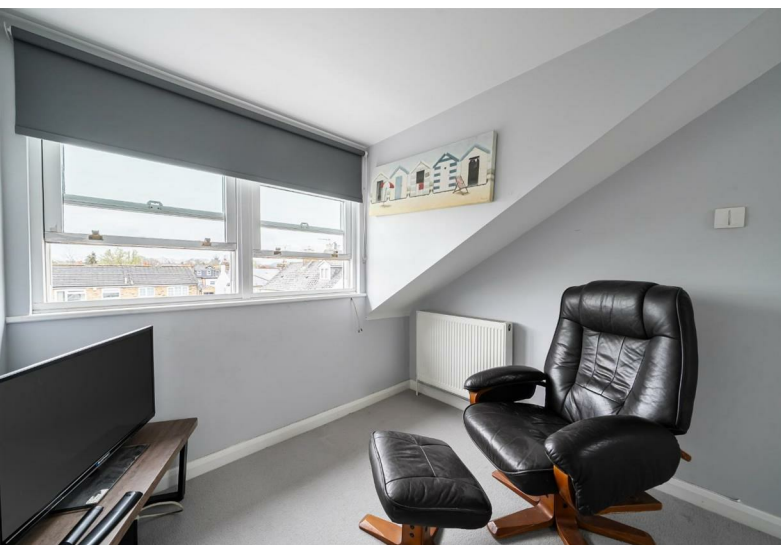
Limited Use Area(s) = 17 sq ft / 1.5 sq m

For identification only - Not to scale



Floor plan produced in accordance with RICS Property Measurement 2nd Edition, Incorporating International Property Measurement Standards (IPMS2 Residential). © nichecom 2026. Produced for Hardings. REF: 1436197





11 High Street, Windsor, Berkshire, SL4 1LD,  
T: 01753 833 118 | E: [info@hardings.co.uk](mailto:info@hardings.co.uk)  
[www.hardings.co.uk](http://www.hardings.co.uk)

