



Bracknell Gardens

Hampstead, NW3

£3,100 per month
(£715.38 per week)

VIDEO TOUR AVAILABLE. A delightful 2 bedroom 1st floor apartment in this converted red-brick Victorian house benefiting from communal gardens and building housekeeper in Hampstead. Sole Agent.

CHESTERTONS



Bracknell Gardens

Hampstead, NW3

- A Delightful 1st Floor Apartment in Red Brick Building
- 2 Bedrooms, 1 Bathroom, Reception, Kitchen
- Communal Gardens. Building Housekeeper
- Situated in Hampstead, Walking Distance to Shops/Amenities

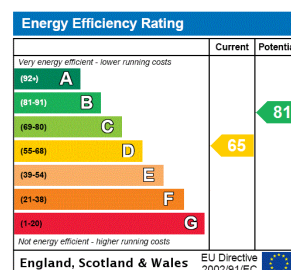


A delightful 2 bedroom 1st floor apartment in this converted red-brick Victorian house benefiting from communal gardens and building housekeeper.

The property is situated close to the amenities of Hampstead Village (Northern Line). Accommodation comprises reception room, fully fitted kitchen, double bedroom with built in storage, further small double bedroom, bathroom. Sole Agent.

A delightful 2 bedroom 1st floor apartment in this converted red-brick Victorian house benefiting from communal gardens and building housekeeper. The property is situated close to the

Minimum Term: 12 months
Deposit Required: £3,576.92
Local Authority: London Borough Of Camden
Council Tax Band: F
EPC Rating: D
Furnished, Unfurnished



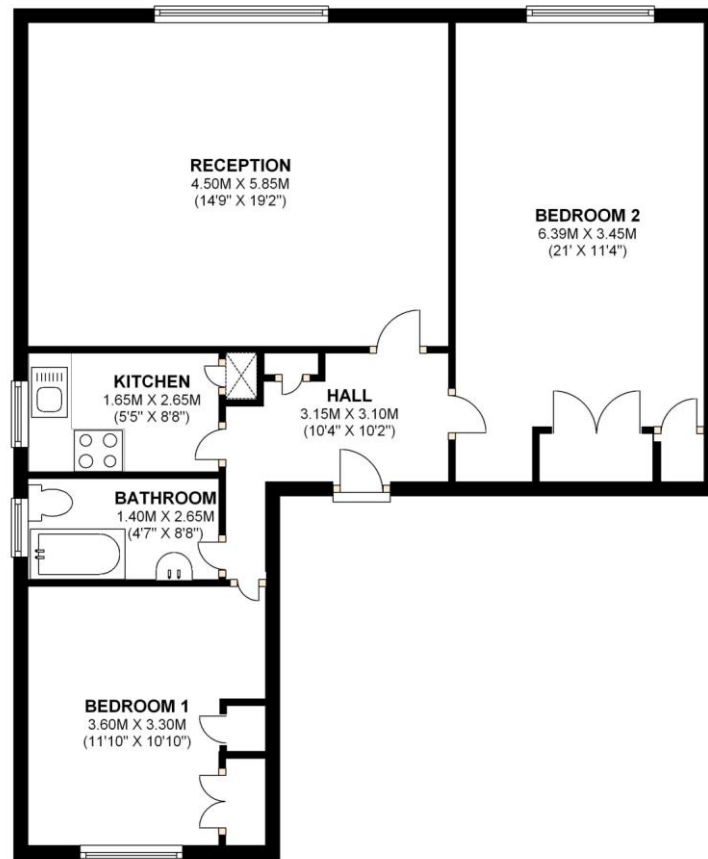
Chestertons Premier Property Management

26 Clifton Road
 London
 W9 1SX
 premier.dept@chestertons.co.uk
 02072985908
 chestertons.co.uk

Additional tenant charges apply (fees apply to non-AST tenancies only)
 Tenancy Agreement Fee: £300
 References per Tenant/Guarantor: £60
 Inventory check (approx. £100 – £250 inc. VAT)
 chestertons.co.uk/property-to-rent/applicable-fees

FIRST FLOOR

APPROX. 74.6 SQ. METRES (803.3 SQ. FEET)



TOTAL AREA: APPROX. 74.6 SQ. METRES (803.3 SQ. FEET)

