



## Lighthouse Park, £150,000

- NO CHAIN
- Two Bedrooms
- Over 50s only
- Cash only
- Council tax band A
- EPC Rating: Exempt



 2  1  1



## About the property

A stylish two-bedroom park home with a spacious reception area, bright kitchen, and private garden, set in a peaceful over-50s community. Fully accessible, air-conditioned, and offering comfortable living in a sought-after location.

## Accommodation

### Hallway

### Kitchen/ Living/ Diner

21' 8" Max x 13' 1" ( 6.60m Max x 3.99m )

### Bedroom 1

13' 1" x 10' 6" Max ( 3.99m x 3.20m Max )

### Bedroom 2

9' 6" x 4' 11" ( 2.90m x 1.50m )

### Shower Room

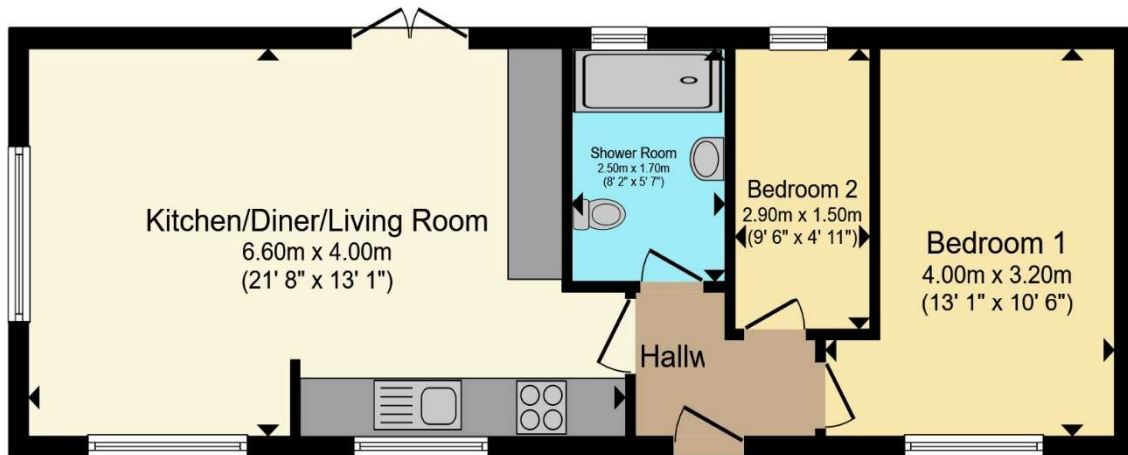
8' 2" x 5' 7" ( 2.49m x 1.70m )

### Agents Note

There are a number of obligations on both sellers and buyers when completing the process for purchasing a park home and we recommend using a solicitor. Sites often have requirements specific to the purchase of a property and to 'the site' in general, which could include paying the site owners commission. Intending purchasers should satisfy themselves about any such requirements including any specific restrictions on occupancy or residential use of the home.



## Floorplan



Total floor area 48.0 m<sup>2</sup> (517 sq.ft.) approx

This floor plan is for illustrative purposes only. It is not drawn to scale. Any measurements, floor areas (including any total floor area), openings and orientation are approximate. No details are guaranteed, they cannot be relied upon for any purpose and they do not form part of any agreement. No liability is taken for any error, omission or misstatement. A party must rely upon its own inspection(s). Powered by [www.propertybox.io](http://www.propertybox.io)



## Important Information

Note while we endeavour to make our sales details accurate and reliable, if there is any point which is of particular interest to you, please contact the office and we will be pleased to confirm the position for you. We have not personally tested any apparatus, equipment, fixtures, fittings or services and cannot verify they are in working order or fit for their purposes. Nothing in these particulars is intended to indicate that carpets or curtains, furnishings or fittings, electrical goods (whether wired or not). Gas fires or light fittings or any other fixtures not expressly included form part of the property offered for sale. This computer generated Floorplan, if applicable, is intended as a general guide to the layout and design of the property. It is not to scale and should not be relied upon for dimensions. Tenure: We cannot confirm the tenure of the property as we have not had access to the legal documents. The buyer is advised to obtain verification from their solicitor or surveyor.

Peter Alan Limited is registered in England and Wales under company number 2073153, Registered Office is Cumbria House, 16-20 Hockliffe Street, Leighton Buzzard, Bedfordshire, LU7 1GN. VAT Registration Number is 500 2481 05. For activities relating to regulated mortgages and non-investment insurance contracts, Peter Alan Limited is an appointed representative of Connells Limited which is authorised and regulated by the Financial Conduct Authority. Connells Limited's Financial Services Register number is 302221. Most buy-to-let

