



5 Chicheley Street | | Waterloo | SE1 7PJ

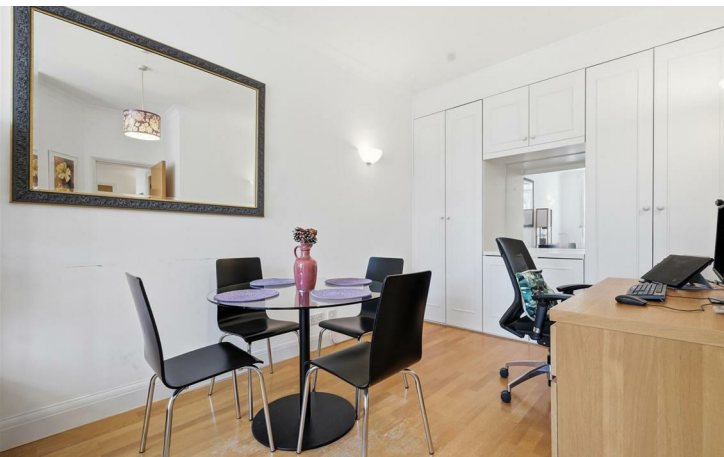
£590,000

ICON
RESIDENTIAL

5 Chicheley Street |
Waterloo | SE1 7PJ
£590,000

- 2 spacious bedrooms
- 2 modern bathrooms
- Cosy reception room
- 2 parking spaces
- 630 sq ft living space
- Close to transport links
- Near local amenities
- Ideal for professionals
- Viewing recommended
- Large storage unit in basement included

Welcome to this charming flat located at 5 Chicheley Street in the vibrant area of Waterloo. This delightful property boasts a well-designed layout, offering a comfortable living space of 630 square feet. The flat features one inviting reception room, perfect for relaxation or entertaining guests. With two spacious bedrooms, it provides ample



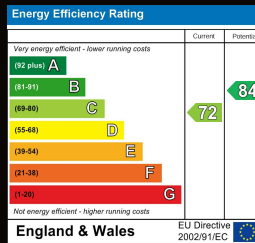


room for both residents and visitors alike.

The property includes two modern bathrooms, ensuring convenience and privacy for all occupants. One of the standout features of this flat is the inclusion of two dedicated parking spaces, a rare find in such a bustling area, making it ideal for those with vehicles.

Residents will also appreciate the added luxury of a private gym and pool, providing excellent opportunities for fitness and leisure right at your doorstep. Additionally, a large storage unit is also included, offering practical solutions for keeping your belongings organised and out of sight.

This flat is not just a home; it is a lifestyle choice, combining comfort, convenience, and modern amenities in a sought-after location. Whether you are looking to buy or rent, this property presents an excellent opportunity to enjoy the best of urban living in Waterloo.



52 Grosvenor Gardens
 London
 SW1W 0AU
 020 7956 2080
 steven.hartman@icon-residential.co.uk
<http://www.icon-residential.co.uk/>