



15 Hither Field, Charing

Offers in Region of £335,000

Skippers

Hallway

Window to front and stairs to first floor with understairs storage cupboard.

Cloakroom

Low level wc, wash hand basin.

Lounge

11' 4" x 11' 4" (3.45m x 3.45m)

Window outlook to front.

Study/Snug

12' 7" x 6' 9" (3.84m x 2.06m)

Window outlook to front, Velux window and handy built in desk.

Kitchen/Dining Room

21' 5" x 7' 8" (6.53m x 2.34m)

Range of shaker style cupboards and drawers with additional wall mounted units, window outlook to rear, double built in fridge & freezer, integrated dishwasher and washing machine, 4 ring gas hob with extractor fan over, double built in ovens, built in corner seated area, doors leading to rear garden.

Landing

Doors leading to bedrooms and family bathroom.

Bedroom

11' 7" x 10' 10" (3.53m x 3.30m)

Window outlook to rear

Bedroom

11' 5" x 8' 8" (3.48m x 2.64m)

Window outlook to front

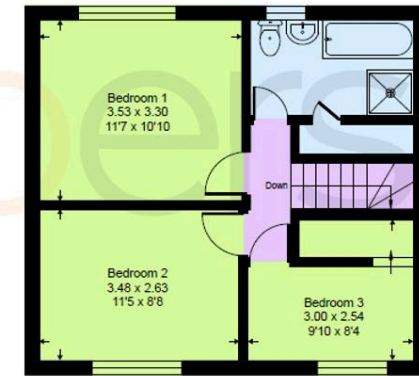
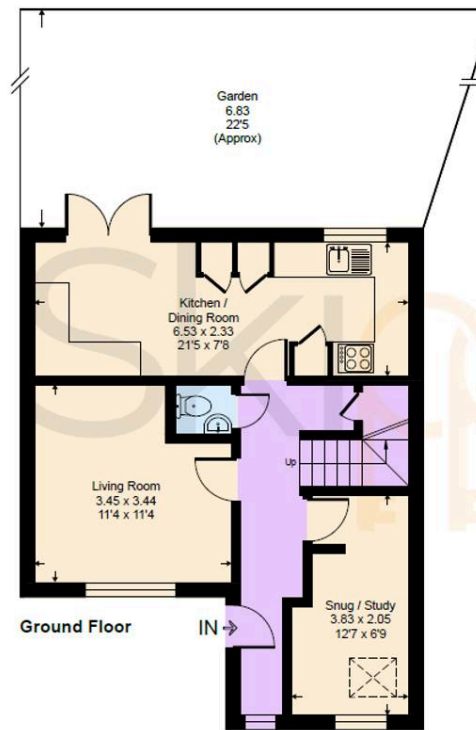
Bedroom

9' 10" x 8' 4" (3.00m x 2.54m)

Window outlook to front with built in cabin bed

Hither Field, TN27

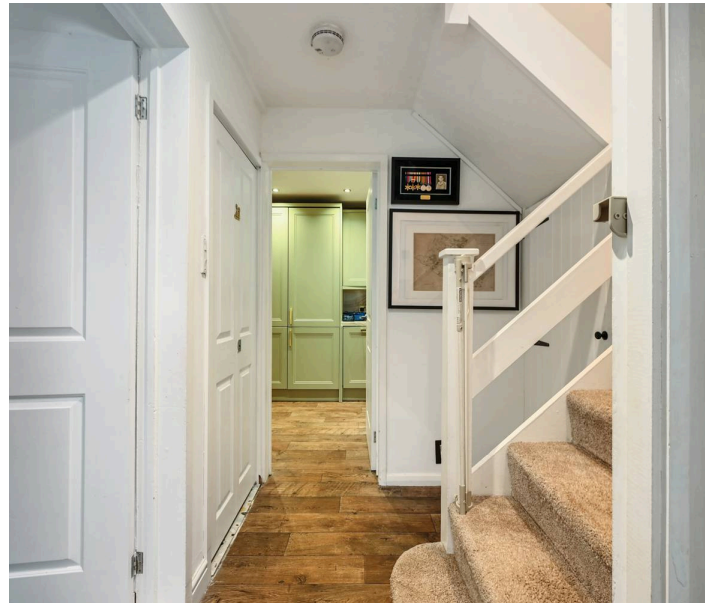
Approximate Gross Internal Area = 84.2 sq m / 907 sq ft

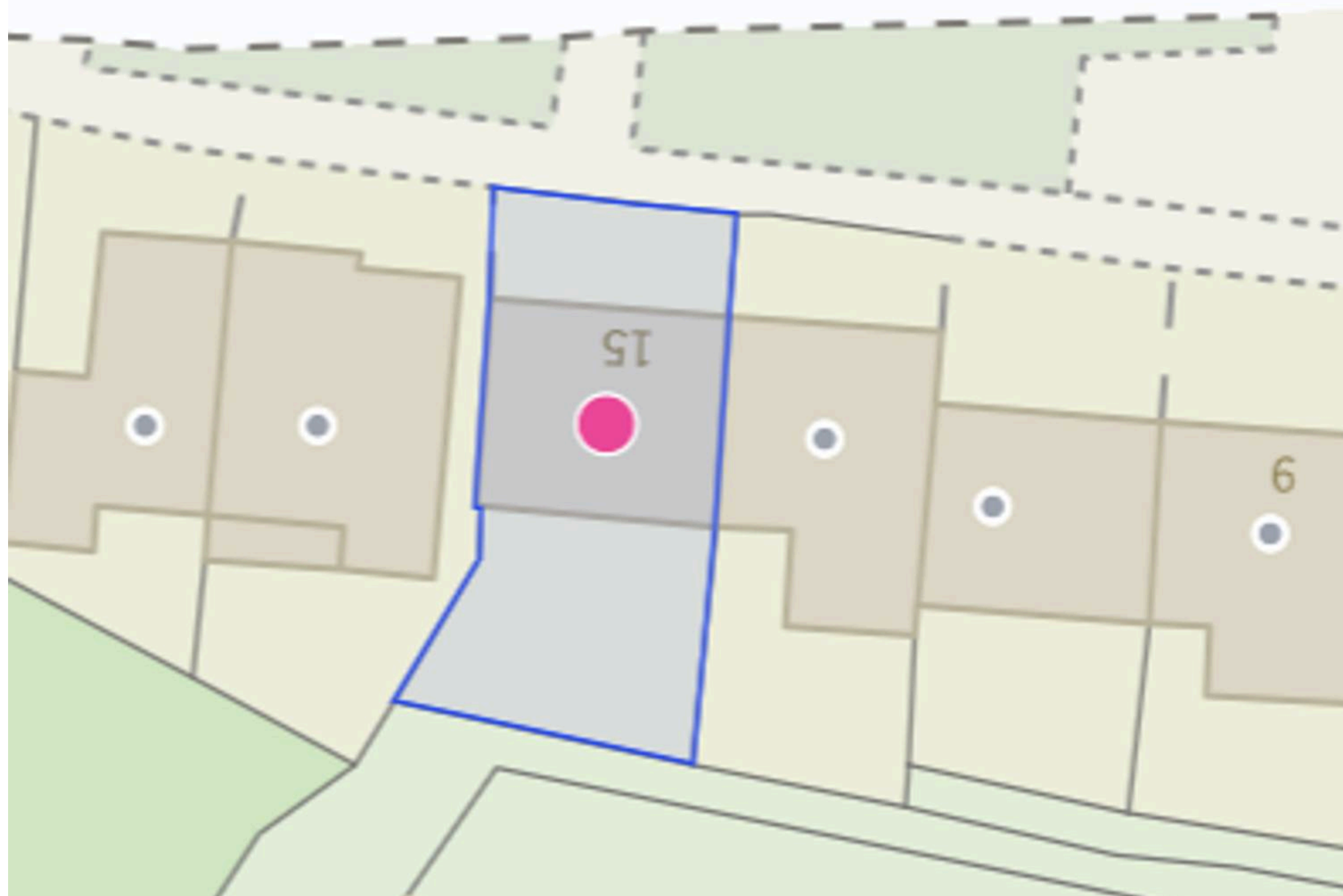




Family Bathroom

4 piece white suite comprising low level wc, wash hand basin with mixer tap and vanity storage under, separate shower cubicle, freestanding bath with mixer tap, obscured windows to rear, tiled flooring, inset spotlights.







Skippers Estate Agents – Ashford

5 Kings Parade High Street, Ashford – TN24 8TA

01233 632383

ashford@skippers-ea.co.uk

skippers-ea.co.uk

Skippers

