



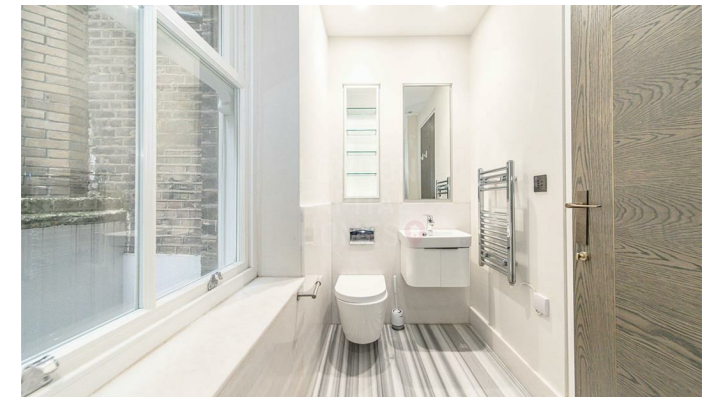
Pink Mews, 1-6 the Dyers Building

, London EC1N 2JT

- Two-bedroom, two-bathroom apartment
- Fully fitted with integrated appliances
 - Fully equipped gymnasium
- Perfectly positioned between Farringdon, Chancery Lane, and Holborn
- Bright open-plan reception and dining area
 - Residents' reception / lounge area
 - Secure entry system
 - EPC-B

£4,000 Per Month

Local Authority **City Of London**
Council Tax Band **F**
EPC Rating **B**



London Office Office

Spaces Victoria, 25 Wilton Road, Pimlico,
London, SW1V 1LW

Contact

020 3084 3094
XL@londonvictoriagroups.co.uk
www.londonvictoriagroups.co.uk

Agents Note: Whilst every care has been taken to prepare these particulars, they are for guidance purposes only. All measurements are approximate and for general guidance purposes only and whilst every care has been taken to ensure accuracy, they should not be relied upon and potential buyers/tenants are advised to recheck the measurements.