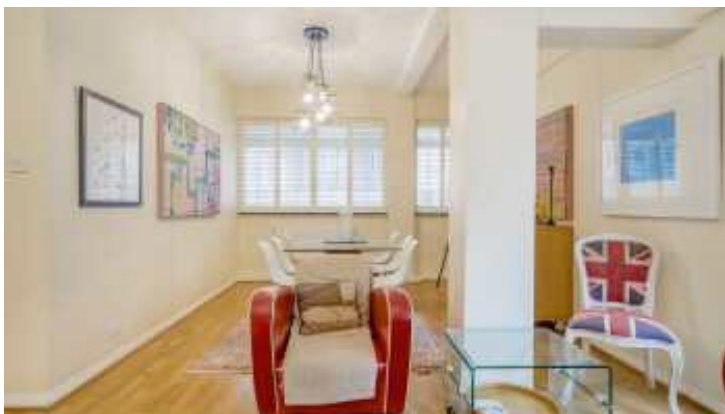


# Frank Harris — & Co. —



## Amen Lodge, Warwick Lane, EC4M

£849,500

A spacious two bedroom apartment (989 sqft). With oak flooring and high ceilings throughout, a well appointed white kitchen suite, dual aspect reception room with an additional sky light, this area would be perfect as a study area, two double bedrooms with fitted storage and a family bathroom with a bath and shower cubicle. There is a parking space below the building and Share of Freehold.



Based opposite Paternoster Square with its bars and restaurants and just a short walk from St.Pauls Cathedral, One New Change shopping centre, Fleet Street for the Royal Courts of Justice and easily accessible to the West End. Millenium Bridge to access the South Bank, with the Tate Modern and the Globe Theatre at the far side of the bridge,

The building has undergone refurbishment over the last few years with new windows, the mahogany frames on the communal areas were polished as were the marble floor tiles, three new boilers were replaced which supply the communal heating and hot water. CCTV was also added to the communal entrance area. The communal staircase has an Art Deco feel with a winding metal bannister and mahogany handrails.

Amen Lodge is a popular private block in the heart of the City benefiting from daytime porter. Located within a few moments of St Pauls Cathedral, the building is ideally situated for both work and leisure.

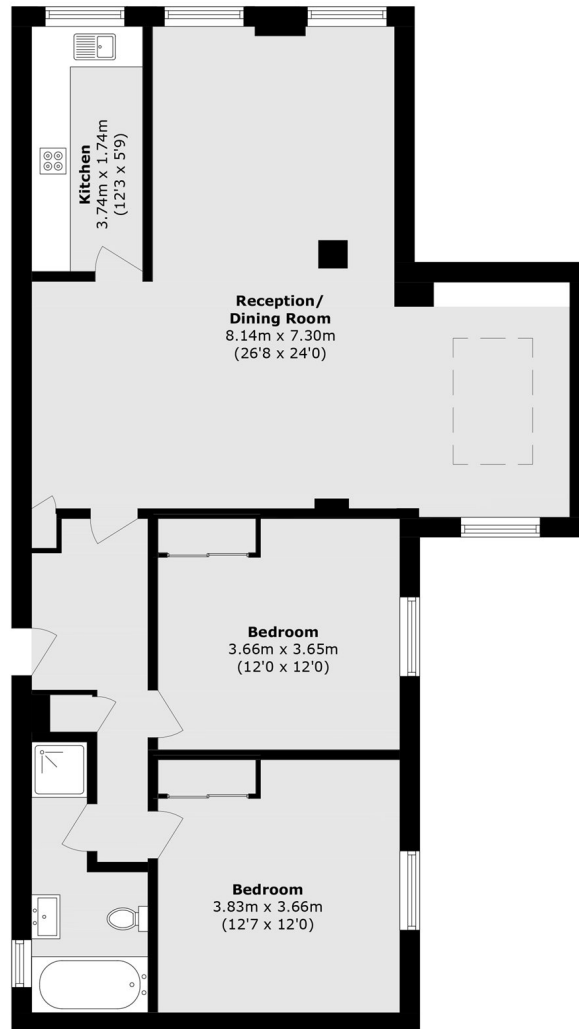
Transport links are available from St Pauls, Blackfriars and Farringdon allowing easy access across the bus, tube and rail networks.

- Two Bedroom Apartment • High Ceilings • Share Of Freehold •
- Parking Space • No Onward Chain • Located Close To St.Pauls •





# Frank Harris & Co.



Total area (approx.): 91.9 sq. m (989.2 sq. ft)

Frank Harris & Co. Barbican and City  
87 Long Lane, London,  
EC1A 9ET  
020 7600 7000  
[citysales@frankharris.co.uk](mailto:citysales@frankharris.co.uk)

Energy Rating: C. We aim to make our particulars both accurate and reliable. However they are not guaranteed; nor do they form part of an offer or contract. If you require clarification on any points then please contact us, especially if you're traveling some distance to view. Please note that appliances and heating systems have not been tested and therefore no warranties can be given as to their good working order.

