



Bruce Close, Deal

Guide Price £320,000

DOMINIC MURPHY POWERED BY **exp**™ **UK**

@ dominic.murphy@exp.uk.com

🌐 dominicmurphy.exp.uk.com

☎ 01304 746 016

## Bruce Close, Deal

Tucked away in a peaceful cul-de-sac and within easy walking distance of local amenities, this **chain-free three-bedroom semi-detached** home offers well-proportioned accommodation, a generous garden, off-road parking, and is ready to move straight into.

Internally, the property features a spacious kitchen with room for dining and direct access to the rear garden. The light and airy lounge provides a comfortable living space, complete with an electric fireplace. Upstairs, there are two well-sized double bedrooms, along with a further generous single bedroom. A family bathroom completes the first floor.

Externally, the property benefits from a generously sized rear garden, mainly laid to lawn with a patio area—perfect for outdoor dining and entertaining. To the front, there is a lawned garden, along with a garage and a driveway providing off-road parking for several vehicles.

Location - situated in the sought-after coastal town of Deal, the property enjoys a convenient position between Dover and Ramsgate. Deal is a charming seaside town, rich in history, with beautifully preserved areas such as Middle Street and notable landmarks including Deal Castle and Walmer Castle with fast links to London, and a scenic pier-lined seafront.



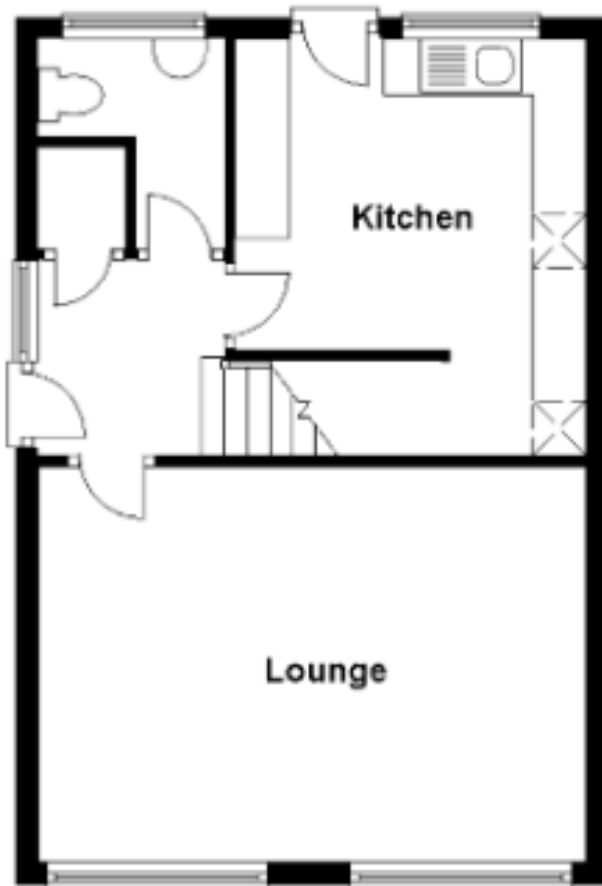


AI enhanced example picture



AI enhanced example picture

**Ground Floor**  
Approx. 403.2 sq. feet



**First Floor**  
Approx. 396.6 sq. feet

