



Hawthorne Crescent, Greenwich SE10 9GN



Hawthorne Crescent, Greenwich SE10

Leasehold (992 years remaining)

Beautifully presented apartment with large covered balcony overlooking peaceful internal gardens in historic Greenwich. Moments from Greenwich Park, Royal Observatory, and excellent transport connections to Canary Wharf and Central London.

Key Features

- 1 Bedroom, 1 Bathroom
- Covered balcony
- Light and spacious throughout
- Council Tax: **C**
- Service Charge: **£2,230 P/A**
- Ground Rent: **£1 P/A**
- Excellent transport links
- EPC: **B**

The apartment's elevated setting provides a sense of privacy and serenity, while the secure gated development ensures peace of mind for residents. The covered balcony represents a particular highlight, offering valuable additional space that extends the living area outdoors, with charming views across the communal gardens that provide a green oasis within this sought-after location.

Greenwich village retains its distinctive character as a UNESCO World Heritage Site, where cobbled streets wind between historic pubs, independent boutiques, and weekend markets. The area seamlessly blends maritime heritage with contemporary living, offering residents access to world-class attractions including the Royal Observatory, National Maritime Museum, and the vast green expanses of Greenwich Park with its stunning panoramic views across London.

Transport connections are exceptional, with Cutty Sark DLR station providing direct links to Canary Wharf in under 10 minutes, while Greenwich railway station offers swift connections to London Bridge and Central London.









Hawthorne Crescent, SE10

Approximate Gross Internal Area = 48.5 sq m / 522 sq ft

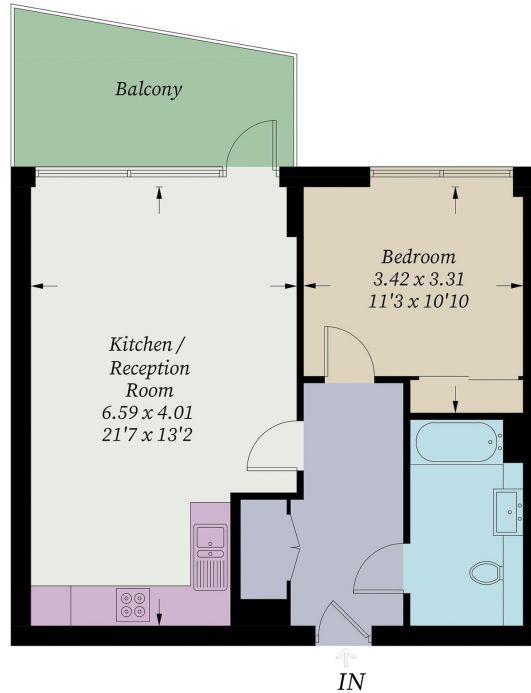


Illustration for identification purposes only, measurements are approximate, not to scale. Fourlabs.co © (ID1273862)