



Thursby Close, School Aycliffe  
Newton Aycliffe



Offers in Region of £319,000



## Thursby Close

School Aycliffe, Newton Aycliffe

For Sale – Spacious Well Presented Three-Bedroom Detached Bungalow in a Quiet Cul-de-Sac

Nestled in a peaceful and private cul-de-sac, this substantially sized three-bedroom detached bungalow offers a rare opportunity to acquire a beautifully proportioned home in a highly sought-after location.

The well-designed accommodation provides generous living space throughout and comprises a spacious lounge, light-filled conservatory, open-plan kitchen/diner, three double bedrooms, modern family bathroom, a utility room leading to a WC, and a double detached garage.

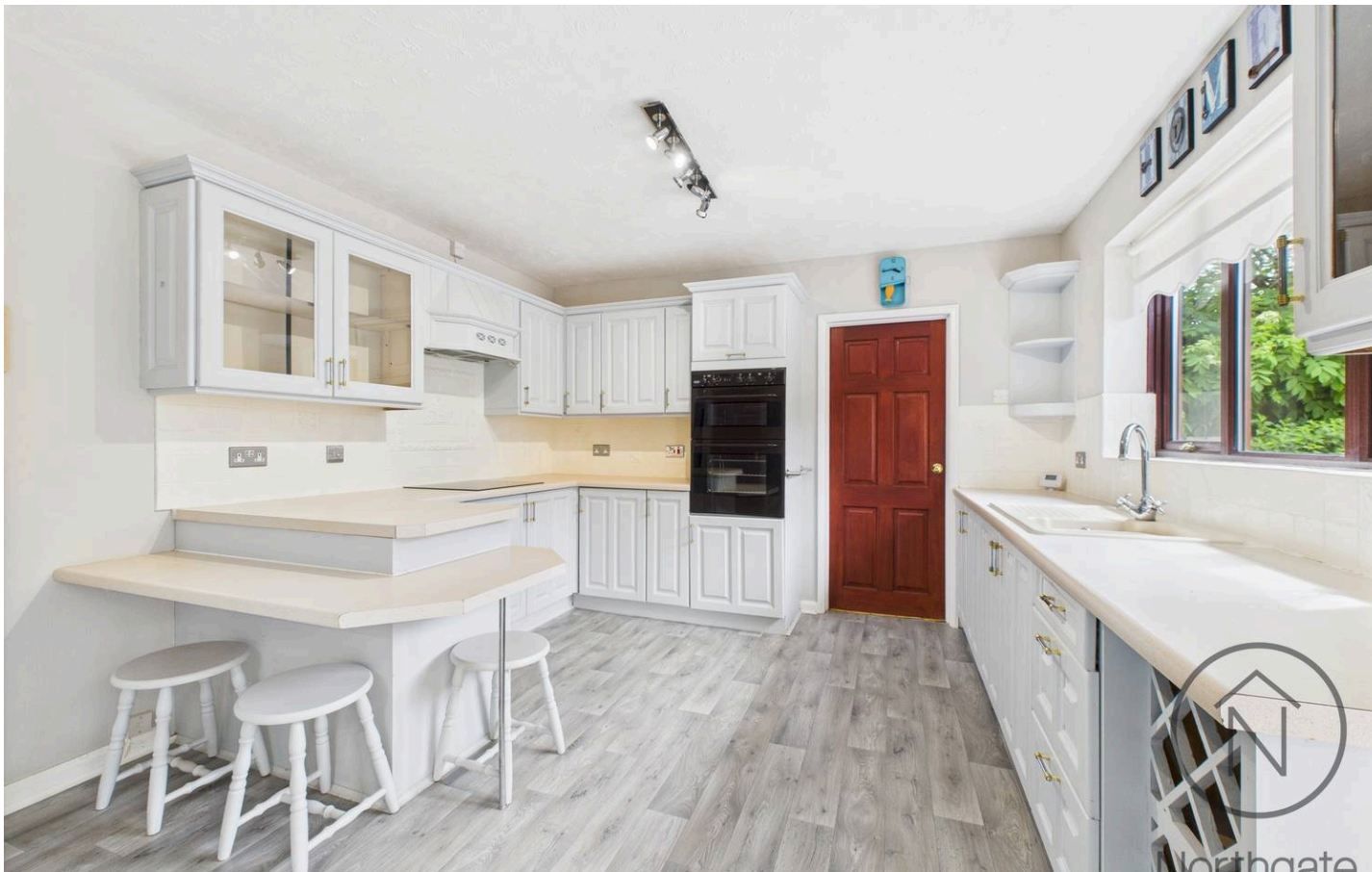
Ideally located, the property benefits from close proximity to a variety of local amenities including highly regarded schools, shops, cafés, and restaurants. Excellent transport links ensure easy access to nearby towns and cities, offering the perfect balance of tranquillity and connectivity.

Please note some rooms have been virtually staged.

Council Tax band: D

Tenure: Freehold

- 3 Bed Detached Bungalow
- Spacious Lounge
- Kitchen / Diner / Utility Room / Conservatory
- Three double bedrooms / bathroom
- Ample Parking / Double Garage
- Energy Performance Certificate: D



**Vestibule**

3'5 x 4'7 (1.06 x 1.41m)

**Hallway**

4'1 x 9'4 (1.25 x 2.87m)

**Lounge**

17' 4" x 17' 3" (5.28m x 5.26m)

**Kitchen/Diner**

11' 7" x 17' 6" (3.53m x 5.33m)

**Utility**

8' 0" x 5' 7" (2.44m x 1.70m)

**Wc**

3' 1" x 5' 8" (0.94m x 1.73m)

**Conservatory**

9' 6" x 10' 7" (2.90m x 3.23m)

**Bedroom 1**

13' 0" x 10' 8" (3.96m x 3.25m)

**Bedroom 2**

14' 2" x 10' 7" (4.32m x 3.23m)

**Bedroom 3**

10' 7" x 9' 0" (3.23m x 2.74m)

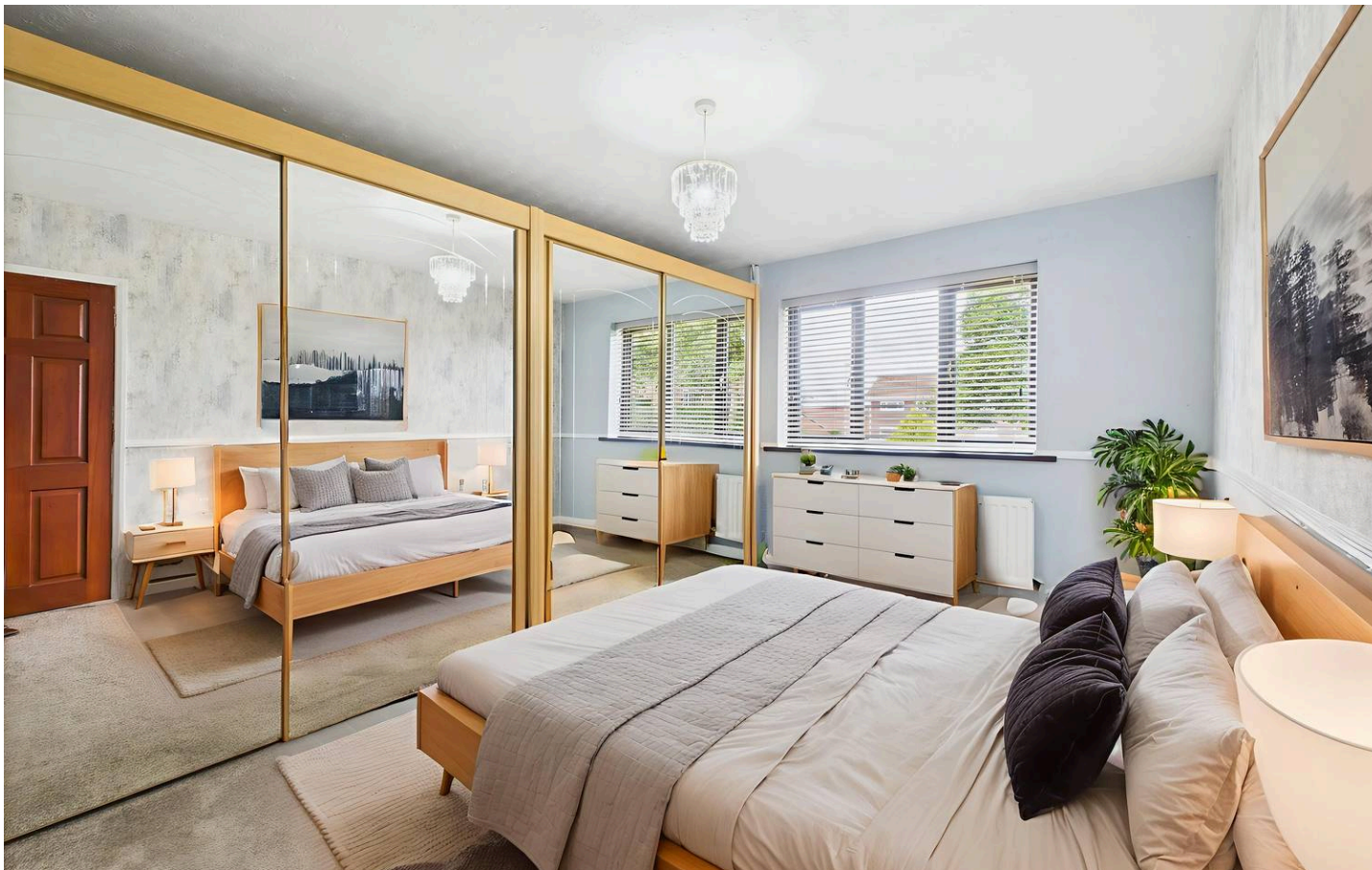
**Bathroom**

8' 3" x 9' 2" (2.51m x 2.79m)

**Garage**

16'8 x 16'5 (5.08 x 5.01m)





FRONT GARDEN

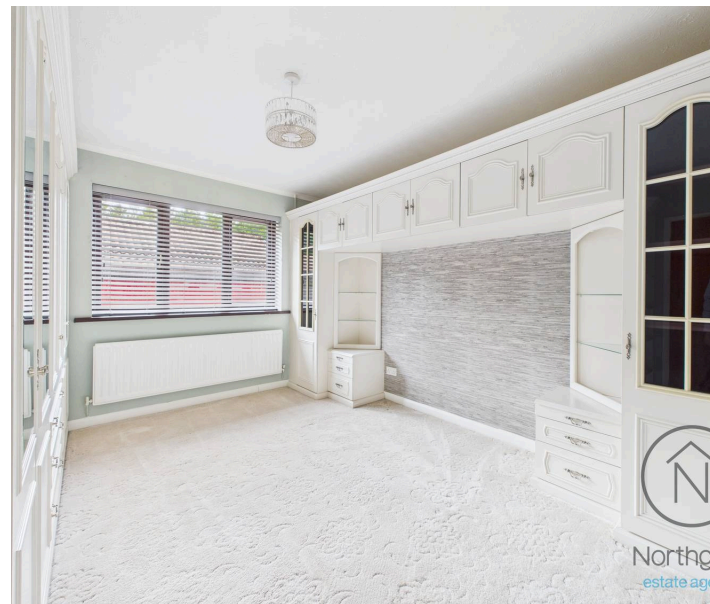
REAR GARDEN

DOUBLE GARAGE

2 Parking Spaces

DRIVEWAY

3 Parking Spaces



Northgate  
estate agents



Northgate  
estate agents



Northgate  
estate agents

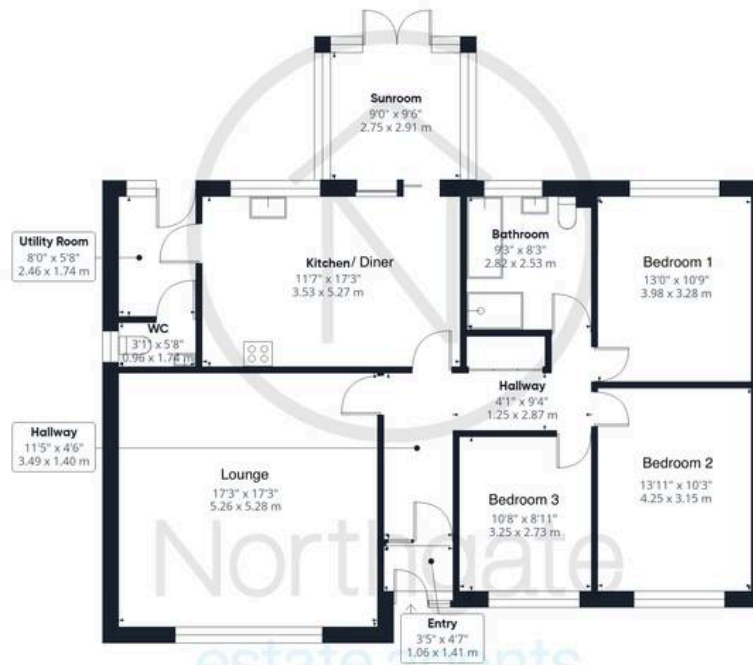


Northgate  
estate agents





Northgate  
estate agents

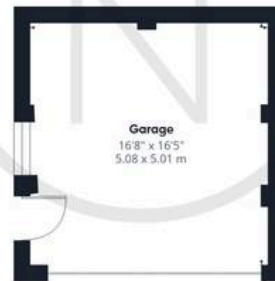


Ground Floor Building 1

Approximate total area<sup>(1)</sup>

1530 ft<sup>2</sup>

142.3 m<sup>2</sup>



Ground Floor Building 2

(1) Excluding balconies and terraces

Calculations reference the RICS IPMS 3C standard. Measurements are approximate and not to scale. This floor plan is intended for illustration only.

GIRAFFE 360



## Northgate - County Durham

Suite 3, Avenue House, Greenwell Road, Newton Aycliffe - DL5 4DH

01325 728333 • [info@northgates.net](mailto:info@northgates.net) • [www.northgates.co.uk/](http://www.northgates.co.uk/)



These particulars do not constitute, nor constitute part of, an offer or contract. No warranties are provided. Verify details through inspection. Northgate estate agents, nor any person in their employment has any authority to make or give any representation or warranty whatever in the relation to this property. All measurements are approximate.