



Northumberland  
Properties

**20 Charles Drive, Widdrington**  
**£189,000**





## 20 Charles Drive

Widdrington, Morpeth

Council Tax band: C

Tenure: Freehold

EPC Energy Efficiency Rating: B

EPC Environmental Impact Rating: B

- Immaculately Presented Three Bedroom Detached Home
- Multi Fuel Eco Approved Stove
- Ideal for First Time Buyers or Downsizing
- Single Detached Garage
- Kitchen/Diner with French Doors Leading to Garden
- Close to Local Amenities
- Entrance Hall with Downstairs WC
- Garden With Patio and Lawn





**Approximate total area<sup>(1)</sup>**  
 379 ft<sup>2</sup>  
 35.3 m<sup>2</sup>

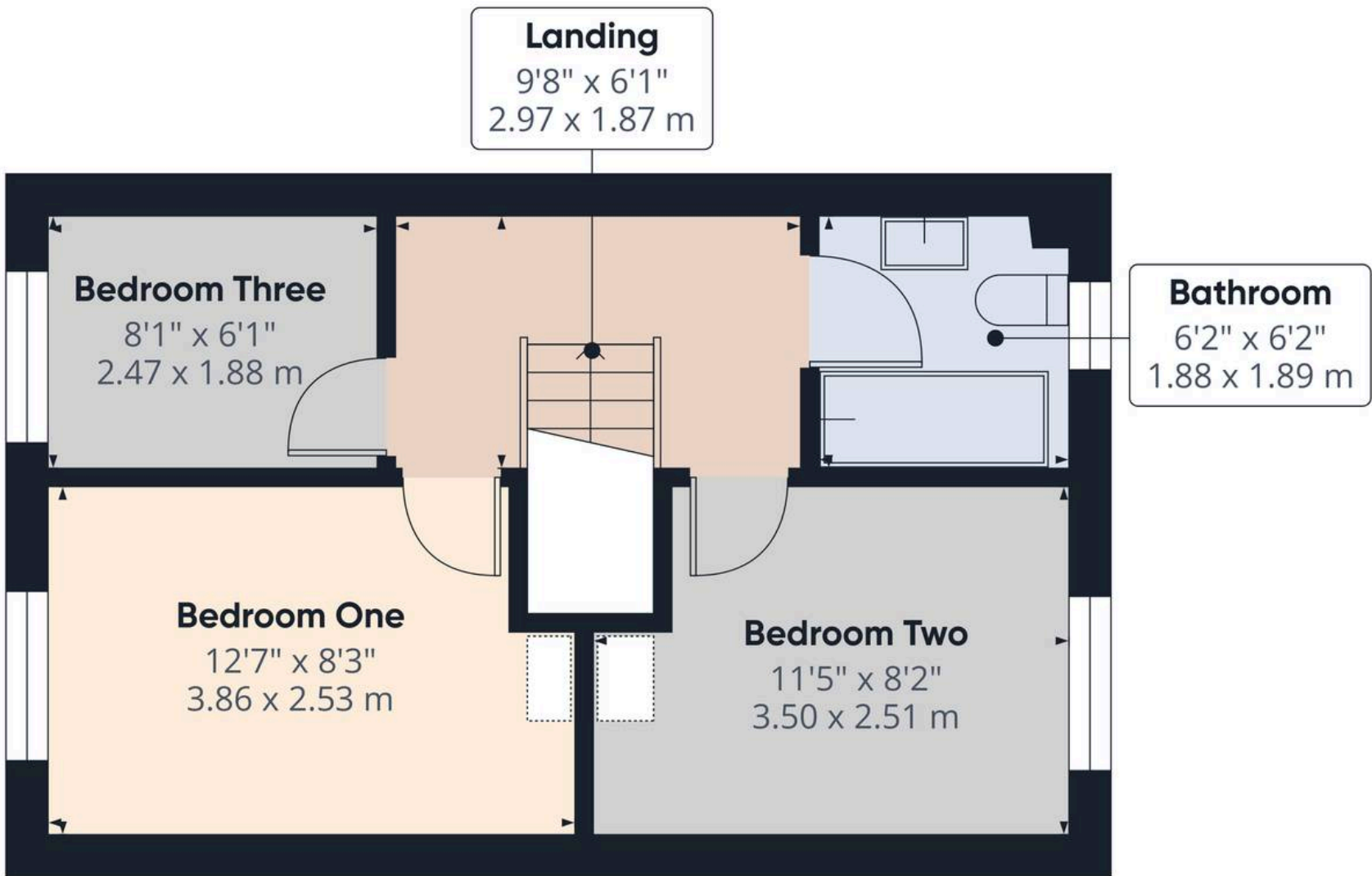
**Reduced headroom**  
 4 ft<sup>2</sup>  
 0.3 m<sup>2</sup>

(1) Excluding balconies and terraces

Reduced headroom  
 ----- Below 5 ft/1.5 m

First Floor Building 1

Calculations reference the RICS IPMS 3C standard. Measurements are approximate and not to scale. This floor plan is intended for illustration only.



Floor 1 Building 1

Approximate total area<sup>(1)</sup>

319 ft<sup>2</sup>  
29.5 m<sup>2</sup>

(1) Excluding balconies and terraces

Calculations reference the RICS IPMS 3C standard. Measurements are approximate and not to scale. This floor plan is intended for illustration only.

GIRAFFE 360



First Floor Building 1



First Floor Building 2

Floor 1 Building 1

**Approximate total area<sup>(1)</sup>**

854 ft<sup>2</sup>

79.3 m<sup>2</sup>

**Reduced headroom**

4 ft<sup>2</sup>

0.3 m<sup>2</sup>

(1) Excluding balconies and terraces

Reduced headroom

----- Below 5 ft/1.5 m

Calculations reference the RICS IPMS 3C standard. Measurements are approximate and not to scale. This floor plan is intended for illustration only.

GIRAFFE360





Widdrington is a small Northumberland village positioned close to the coastline and surrounded by open countryside, offering a peaceful rural setting while remaining well connected. Located approximately six miles north of Morpeth and within easy reach of Druridge Bay, it enjoys convenient access to both the A1 and the coastal A1068, providing straightforward road links north towards Alnwick and south to Newcastle. Widdrington is also served by Widdrington railway station, situated on the East Coast Main Line around 23 miles north of Newcastle, with direct connections to Morpeth (around 9 minutes) and onward to Newcastle for wider national links.



## Northumberland Properties

12 Market Street, Alnwick - NE66 1TL

01665660910 • [info@northumberlandproperties.co.uk](mailto:info@northumberlandproperties.co.uk) • <http://northumberlandproperties.co.uk>



Northumberland  
Properties