



Larger style two-bedroom first floor apartment

Exclusive building with only four apartments

Spacious lounge filled with natural light

Oakburn Walk, Jamestown, Alexandria, G83 9NJ

EVE Property are proud to present this spacious larger style first floor two-bedroom luxury apartment, ideally positioned within a modern and sought-after residential development. Occupying a preferred first floor position within a well-maintained building of only four apartments, this impressive home offers generous accommodation, allocated residents' parking and professionally factored communal grounds. While the property would benefit from light modernisation and cosmetic redecoration, it presents an excellent opportunity for purchasers to personalise and add value.

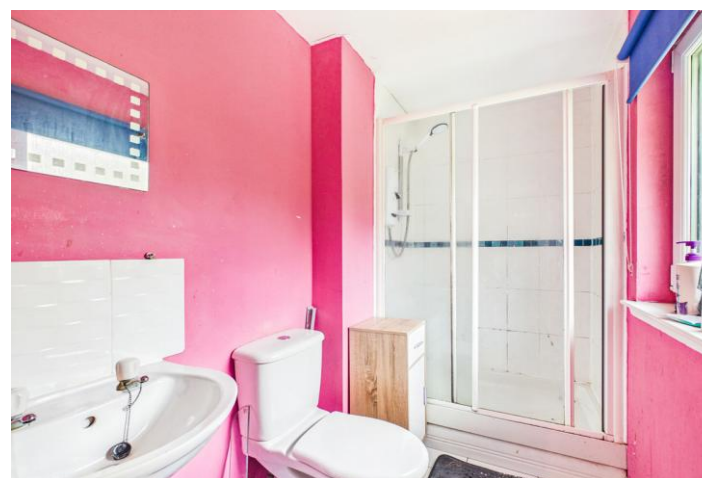


Property Description

Access to the property is via a secure communal entrance leading to a bright and well-maintained stairwell. Upon entering, you are welcomed by a spacious reception hallway with excellent storage facilities and access to all principal apartments. The generous lounge is flooded with natural light, creating a bright and comfortable living space with excellent proportions for both everyday living and entertaining.

The spacious dining kitchen offers an extensive range of fitted wall and floor mounted units, complementary worktops and ample space for family dining. With its generous layout, the kitchen provides an excellent foundation for modernisation, allowing the next owner to create a contemporary heart of the home.

Both bedrooms are well-proportioned doubles, with the principal bedroom benefiting from fitted wardrobes and an en-suite shower room. The second bedroom is equally spacious and offers flexibility as a guest bedroom, children's room or home office. The family bathroom is fitted with a three-piece suite and complements the practical layout of the apartment.



Further enhancements include gas central heating, double glazing, secure door entry, allocated residents' parking and beautifully maintained factored communal grounds. The property enjoys a preferred first floor position within an exclusive building of only four apartments, offering a peaceful residential setting with a greater sense of privacy than larger developments.

Offering generous room sizes, an excellent layout and superb potential, this larger style apartment provides a fantastic opportunity for buyers seeking to modernise a quality home within a desirable development.



Ideal for first-time buyers, professional couples, downsizers or investors, early viewing is highly recommended.



1 Herschell Street, Anniesland,
Glasgow, Lanarkshire, G13 1HR

www.eve-property.co.uk
0141 255 0020
hello@eve-property.co.uk

Agents Note: Whilst every care has been taken to prepare these particulars, they are for guidance purposes only. All measurements are approximate are for general guidance purposes only and whilst every care has been taken to ensure their accuracy, they should not be relied upon and potential buyers/tenants are advised to recheck the measurements