


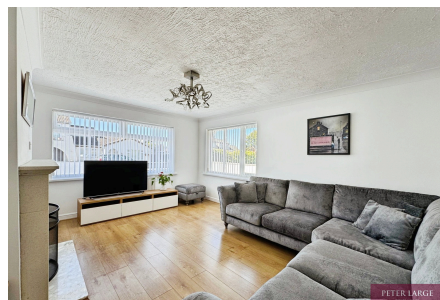


## 46 Denbigh Circle, Kinmel Bay, LL18 5HW

£264,950

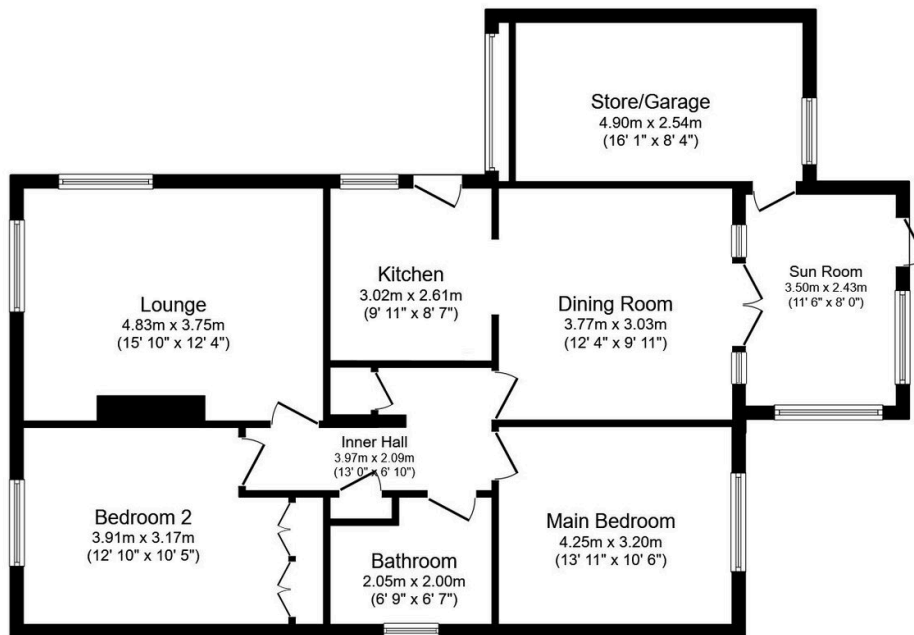
 2
  1
  2



This immaculate detached two bedroom bungalow resides in the popular seaside town of Kinmel Bay, The property provides versatile single storey living, comprising two reception rooms, fitted kitchen, two double bedrooms and family bathroom. The layout lends itself to both everyday living and hosting, with direct access to an inviting sun room leading out to the rear garden. Externally, the bungalow stands on a good sized plot with ample off-street parking and a private enclosed well maintained rear garden designed for outdoor dining and entertaining. Kinmel Bay sits between the coastal towns of Rhyl and Abergele, placing a range of supermarkets, retail parks, seafront walks and leisure facilities within easy reach.

## Key Features

- Detached two bedroom bungalow
- Two reception rooms for flexibility
- Ample off street parking and car port
- Popular seaside town location
- EPC - C / Council tax - D
- Immaculately presented
- Good sized private rear garden
- Rear sun room
- Freehold
- Date 29/04/2026



Floor Plan

Floor area 102.2 sq.m. (1,100 sq.ft.)

Total floor area: 102.2 sq.m. (1,100 sq.ft.)

This floor plan is for illustrative purposes only. It is not drawn to scale. Any measurements, floor areas (including any total floor area), openings and orientations are approximate. No details are guaranteed, they cannot be relied upon for any purpose and do not form any part of any agreement. No liability is taken for any error, omission or misstatement. A party must rely upon its own inspection(s). Powered by [www.Propertybox.io](http://www.Propertybox.io)