



Guide Price
£575,000

Freehold

4x  2x  1x 

**Martens Close,
Bexleyheath, Kent, DA7**

OVER 60?

Secure this property
for up to **59% less!**

Wards
Helping you move forwards



Main features

- Extended semi detached house
- Generous sized rooms throughout
- Peaceful setting with Martens Park on your doorstep
- Barnehurst and Crayford stations within easy reach
- Good choice of schools nearby

Accommodation

GROUND FLOOR

Entrance Hall
 Lounge: 14'11 x 12'0 (4.55m x 3.66m)
 Dining Room: 13'5 x 10'6 (4.09m x 3.20m)
 Kitchen: 12'2 x 7'6 (3.71m x 2.29m)
 Breakfast Room: 10'0 x 7'3 (3.05m x 2.21m)
 Utility Room: 7'7 x 4'6 (2.31m x 1.37m)

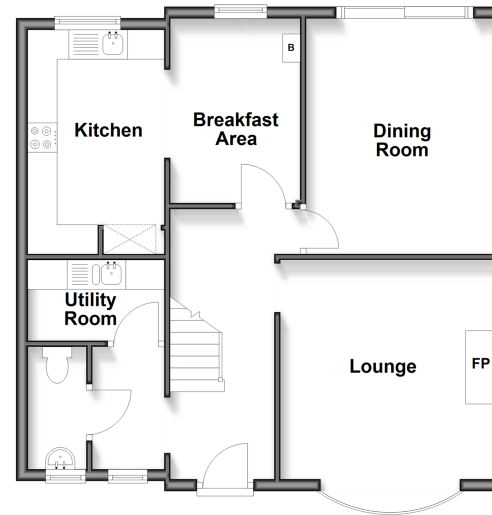
FIRST FLOOR

Landing
 Bedroom 1: 15'1 x 11'1 (4.60m x 3.38m)
 Bedroom 2: 17'3 x 7'5 (5.26m x 2.26m)
 Bathroom
 Bedroom 3: 12'11 x 7'1 (3.94m x 2.16m)
 En-Suite Shower Room
 Bedroom 4: 10'2 x 7'1 (3.10m x 2.16m)

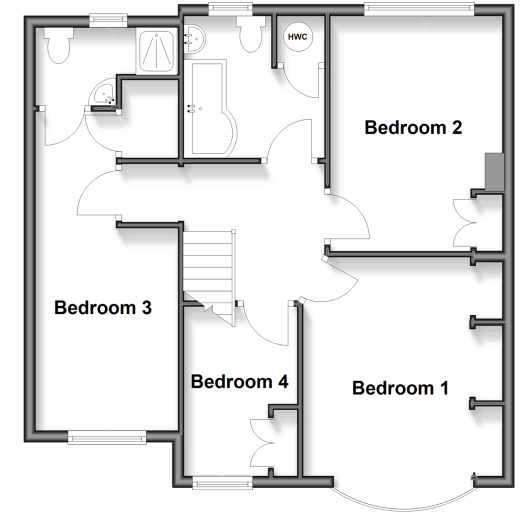
OUTSIDE

Driveway to Front
 Garden to Rear

Ground Floor
 Approx. 62.0 sq. metres (667.6 sq. feet)



First Floor
 Approx. 60.5 sq. metres (650.8 sq. feet)



Call Barnehurst - 01322 335525 ■ wardsofkent.co.uk

■ Through a Homewise Home For Life Plan people aged 60+ can secure this property for up to 59% less, by purchasing a Lifetime Lease



14711376/20260411/JS1/AM