



LAITWOOD ROAD, SW12

£1,100,000

- Split level
- Private garden
- Two bathrooms
- Share of freehold
- Central balham
- Energy rating C





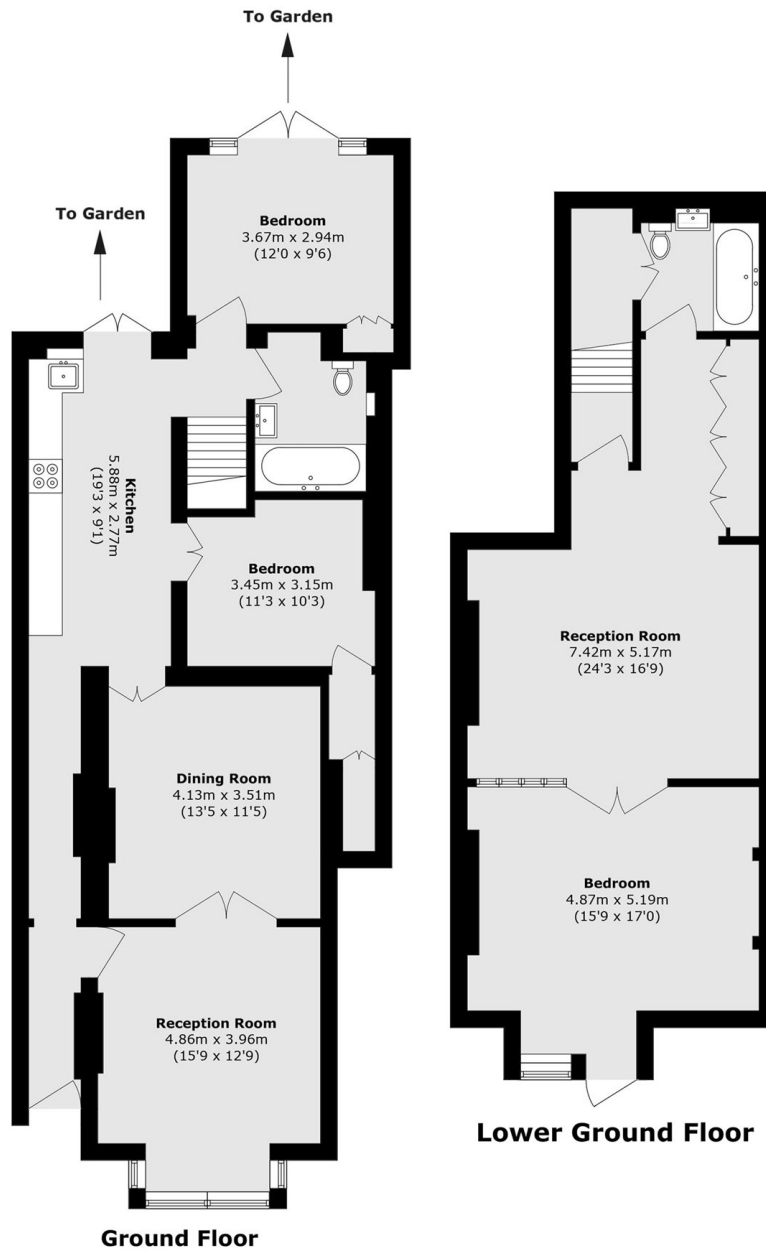
ABOUT THE HOME

This beautiful three bedroom, two bathroom split level maisonette spans over 1,700sqft, boasting an impressive entertaining space on the ground floor. It is very well presented throughout, featuring a large front reception room, opening into a dining room and then modern kitchen with beautiful skylights. To the rear is a private garden

Laitwood Road is a sought after road situated in Central Balham just moments from the station, which offers Northern line services as well as mainline services. It is also well located for easy access to all of the shops, bars, restaurants and supermarkets on offer locally.







Total area (approx.): 160.5 sq. m (1727.6 sq. ft)

JACKSONS BALHAM

8-11 Balham Station Road,
 London, SW12 9SG
 Sales: 020 8675 6555
 Lettings: 020 8675 6565

Energy Rating: We aim to make our particulars both accurate and reliable. However they are not guaranteed; nor do they form part of an offer or contract. If you require clarification on any points then please contact us, especially if you're traveling some distance to view. Please note that appliances and heating systems have not been tested and therefore no warranties can be given as to their good working order.