



## ELLISCOMBE ROAD, SE7

£350,000

Flat  
Two bedrooms  
One bathroom  
Victorian  
Chain free  
Energy rating: d

@marshandparsons  
marshandparsons.co.uk

MARSH &  
PARSONS



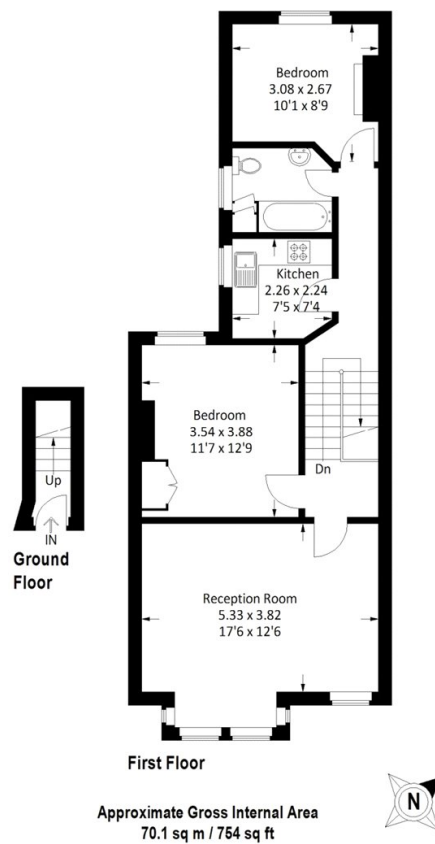
# ABOUT THE PROPERTY

This stunning property occupies the first and second floors of a late Victorian house on a sought-after road. It features a spacious living/dining room with bay windows, two double bedrooms, a fitted kitchen, a white bathroom with shower, and loft access. The interior blends modern décor with original character, including fireplaces, sash windows, and a monochrome tiled pathway.

Elliscombe Road is a tree-lined street laid out in 1892, ideally located near Charlton Village and station with frequent services to central London. It also offers bus links to North Greenwich, Blackheath, and historic Greenwich.



# STEP INSIDE ELLISCOMBE ROAD



**Charlton**  
020 8293 0454

Energy Rating: D We aim to make our particulars both accurate and reliable. However, they are not guaranteed; nor do they form part of an offer or contract. If you require clarification on any points then please contact us, especially if you're traveling some distance to view. Please note that appliances and heating systems have not been tested and therefore no warranties can be given as to their good working order

**MARSH &  
PARSONS**