



2 Townsend Street



2 Townsend Street

Truro, Cornwall, TR1 3GL

Truro City - 3 miles. Newquay - 14 miles. St Agnes - 7 miles.

An ideal modern four bedroom semi-detached family sized home with driveway parking and enclosed rear garden.

- Semi-detached House
- Four Bedrooms
- Master En-suite
- Off Street Parking
- Secure Rear Garden
- Popular Development
- Freehold
- Council Tax Band - D

Guide Price £365,000

LOCATION

The property is conveniently located within easy reach of Treliske Hospital, Richard Lander School, and Truro and Penwith College, making it perfectly placed for families and professionals alike. Truro City, the commercial capital of Cornwall, offers a vibrant mix of amenities including a wide range of independent and national retailers, pubs, cafés, bars, and restaurants, as well as a five-screen cinema and the renowned Hall for Cornwall Theatre. With its excellent transport links and a welcoming community atmosphere, Truro provides the ideal blend of city convenience and Cornish charm.

DESCRIPTION

A well presented, modern four bedroom semi-detached family home with driveway parking to the immediate front and an enclosed garden at the rear, ideally located on Townsend Street with a lovely children's play park close by and near to Treliske Hospital, Richard Lander School, Truro Prep, Truro Leisure Centre and local sports clubs.



Built in 2014, the property offers spacious and practical family sized living, including a comfortable living room at the front, a downstairs w.c and a modern fitted kitchen/ dining room to the rear providing access and views over the rear garden. Off the kitchen is a useful utility/ storage room. Upstairs there are four good-sized bedrooms with the principal bedroom benefiting from an en-suite shower room, with the family bathroom serving the remaining bedrooms.

To the rear, the secure, fenced garden provides an excellent space for children and pets, as well as for outdoor relaxation and entertaining. A patio area is directly accessed via French doors from the kitchen, with steps leading up to a lawn, complemented by established flower beds and attractive shrub borders. A convenient garden water tap is also provided.

Ideal family home or buy-to-let investment with internal viewing recommended.

SERVICES

Mains electricity, gas, drainage and metred water connected.

Broadband: Superfast up to 80 Mbps and Ultrafast up to 1800 Mbps (Ofcom).

Mobile phone: 02, EE, Three and Vodafone are likely (Ofcom).

Council Tax Band - D

Flood Risk - Very Low.

Conservation Area - No.

Satellite and Fibre - Sky and BT are available.

Annual management charge for the upkeep of the common area of the development is approximately £150.00.

VIEWINGS

Strictly by prior appointment via Stags Truro office.

DIRECTIONS

Leaving Truro towards Threemilestone via Highertown, before the roundabout and convenience store turn left into Navigator Way and then first left again into Penwethers Lane, take the first left once more into Townsend Street where the property can be found immediately on your right hand side identified by a Stags' for sale board.



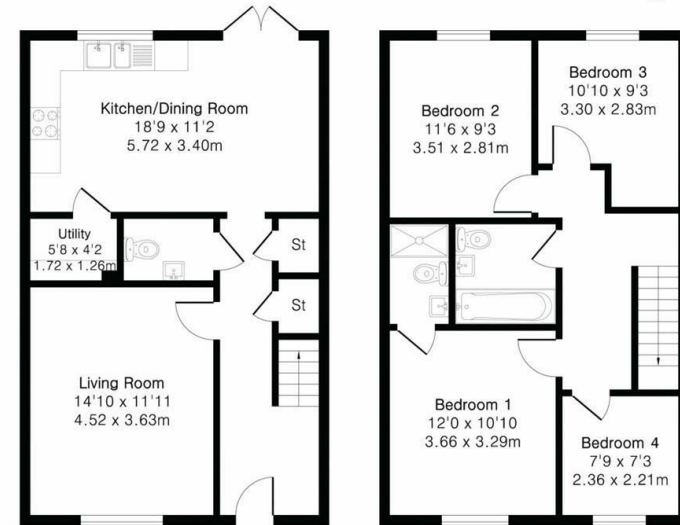
IMPORTANT: Stags gives notice that: 1. These particulars are a general guide to the description of the property and are not to be relied upon for any purpose. 2. These particulars do not constitute part of an offer or contract. 3. We have not carried out a structural survey and the services, appliances and fittings have not been tested or assessed. Purchasers must satisfy themselves. 4. All photographs, measurements, floorplans and distances referred to are given as a guide only. 5. It should not be assumed that the property has all necessary planning, building regulation or other consents. 6. Whilst we have tried to describe the property as accurately as possible, if there is anything you have particular concerns over or sensitivities to, or would like further information about, please ask prior to arranging a viewing.



Approximate Gross Internal Area 1158 sq ft - 108 sq m

Ground Floor Area 579 sq ft – 54 sq m

First Floor Area 579 sq ft – 54 sq m



Ground Floor

First Floor



Floor plan produced in accordance with RICS Property Measurement 2nd Edition. Although Pink Plan Ltd ensures the highest level of accuracy, measurements of doors, windows and rooms are approximate and no responsibility is taken for error, omission or misstatement. These plans are for representation purposes only and no guarantee is given on the total square footage of the property within this plan. The figure icon is for initial guidance only and should not be relied on as a basis of valuation.



Energy Efficiency Rating		Current	Potential
Very energy efficient - lower running costs			
(92 plus)	A		
(81-91)	B		
(69-80)	C		
(55-68)	D		
(39-54)	E		
(21-38)	F		
(1-20)	G		
Not energy efficient - higher running costs			
		79	83
England & Wales		EU Directive 2002/91/EC	

61 Lemon Street, Truro, TR1 2PE

truro@stags.co.uk

01872 264488



@StagsProperty

Cornwall | Devon | Somerset | Dorset | London