



Castles

ASKING PRICE

£1,325,000

Rathcoole Avenue

London, N8 9LY

Castles

PROPERTY SUMMARY

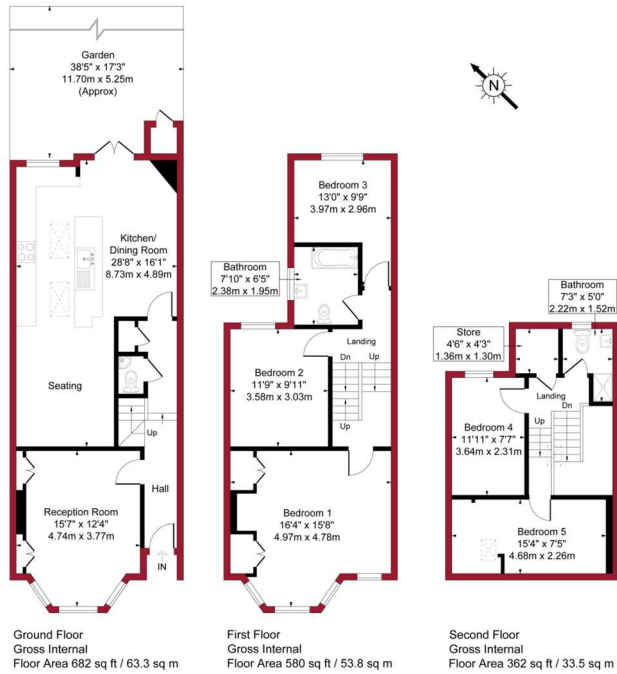
A charming four/five-bedroom Victorian home, ideally positioned for Hornsey railway station, Stationers Park, Crouch End Broadway, and both Rokesly Junior School and Weston Park Primary School.

Further comprising a guest WC, front-reception room, spacious rear living area, incorporating, seating/kitchen/diner, study (or fifth bedroom), shower room, family bathroom, and a private rear garden with shed. The property also benefits from ample storage throughout.

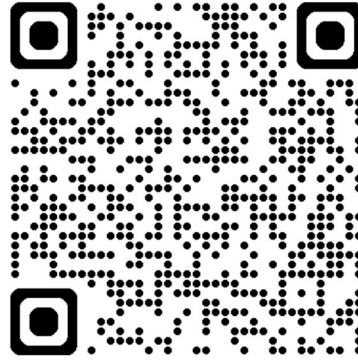
Early viewing is highly recommended.







For a guide to the area please scan this code for more information



House - Terraced

Freehold

Council: Haringey

Council Tax Band: E



Floor plan produced in accordance with RICS Property Measurement 2nd Edition. Although Pink Plan Ltd ensures the highest level of accuracy, measurements of doors, windows and rooms are approximate and no responsibility is taken for error, omission or misstatement. These plans are for representation purposes only and no guarantee is given on the total square footage of the property within this plan. The figure icon is for initial guidance only and should not be relied on as a basis of valuation.



Agents Note: Whilst every care has been taken to prepare these particulars, they are for guidance purposes only. All measurements are approximate and are for general guidance purposes only and whilst every care has been taken to ensure their accuracy, they should not be relied upon and potential buyers/tenants are advised to recheck the measurements



OFFICE ADDRESS

12 Topsfield Parade
Crouch End
London
N8 8PR

OFFICE DETAILS

020 8348 5515
crouchend@castles.london
<https://www.castles.london>

