



## Westwick Gardens, W14

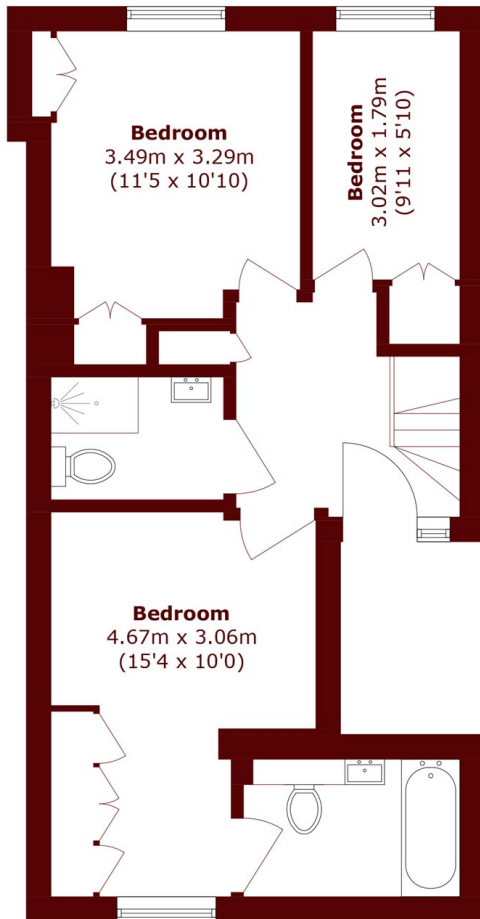
£925,000



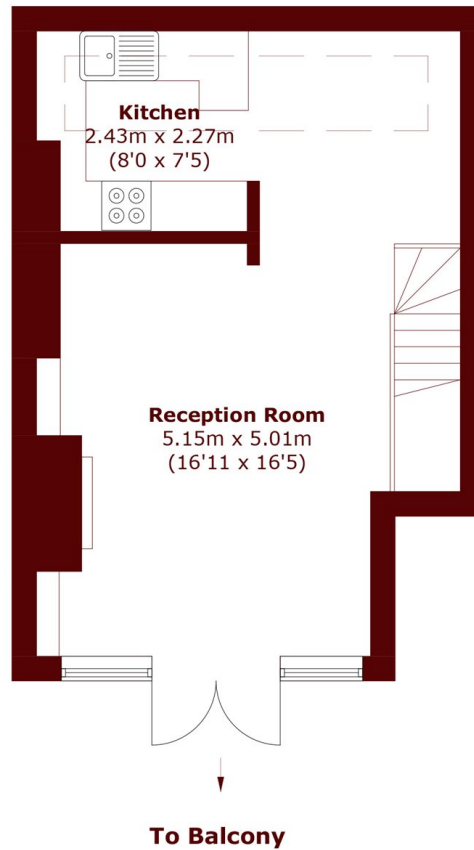
- Three Bedrooms
- Private Terrace

- Two Bathrooms
- Modern Finish

- Naturally Bright
- No Onwards Chain



**Second Floor**



**Third Floor**

Total area (approx.): 84.2 sq. m (906.3 sq. ft)

**Marsh & Parsons Brook Green**

107-109 Shepherds Bush  
Road, London, W6 7LP  
020 7605 7765