

# SNELLERS

ESTATE AGENTS



## Heath Road, TW1

£325,000

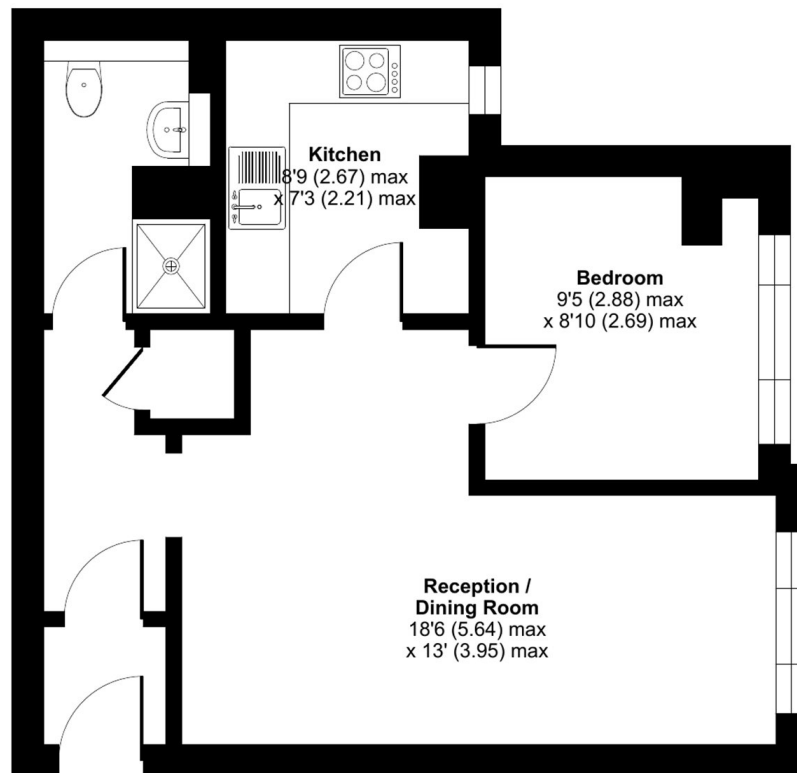
A beautifully presented apartment conveniently located in the heart of Twickenham. The property features a reception room with space for dining, separate kitchen, double bedroom and a modern shower room. Further benefits include a communal roof terrace, no onward chain and the rare inclusion of a parking space in the centre of town.

Ideally positioned with an array of amenities on your doorstep, including The River Thames, Twickenham Green and Twickenham Station for fast and frequent services into London Waterloo.

- Modern Apartment • First Floor • Central Location •
- Close to Station • Allocated Parking • No Onward Chain •

## Heath Road, Twickenham, TW1

Approximate Area = 455 sq ft / 42.2 sq m  
For identification only - Not to scale



FIRST FLOOR

 Floor plan produced in accordance with RICS Property Measurement 2nd Edition, incorporating International Property Measurement Standards (IPMS2 Residential). © nchecon 2026. Produced for Flyp Homes Limited. REF: 1407897

Snellers Twickenham Sales  
64-66 Heath Road  
Twickenham  
TW1 4BX  
020 8892 5555  
twickenhamsales@snellers.co.uk

Energy Rating: C We aim to make our particulars both accurate and reliable. However they are not guaranteed; nor do they form part of an offer or contract. If you require clarification on any points then please contact us, especially if you're traveling some distance to view. Please note that appliances and heating systems have not been tested and therefore no warranties can be given as to their good working order