



Rent Cottage Mount End, Theydon Mount
Epping

Guide Price £1,500,000



Rent Cottage Mount End

Theydon Mount, Epping

This charming Grade II listed detached home offers over 2,800 sq. ft. of versatile accommodation, blending character and history with the comfort of generous living space. Set within just under one acres of land and complemented by a range of outbuildings, the property is ideally suited to modern family life while retaining its period appeal.

- Master With En-Suite
- Detached Family Home Grade II Listed
- Double Garage/Green House
- Stunning Grounds
- Five Bedrooms
- Office



The ground floor opens with a welcoming entrance hall leading to a variety of reception rooms. A bright lounge with an Inglebrook fireplace and an additional reception provide elegant spaces for entertaining, while the dining room connects seamlessly to the kitchen. A separate study, a ground floor bedroom, and a full bathroom add further flexibility, making the layout well-suited to guests, home working, or multigenerational living.

Upstairs, a central landing gives access to four well-proportioned bedrooms, including a principal suite with en-suite bathroom. A family bathroom and a useful store complete the first floor.

Externally, the property is enhanced by a selection of outbuildings, including a newly built summer house with power in the southwest corner of the plot which feels like a beautiful secret garden – a perfect place to escape or entertain. Additional features include an office with the added bonus of an attached toilet and sink, a double garage with a first floor ideal for storage, a greenhouse, and further outbuildings providing excellent scope for work, leisure, or hobbies.

A mature brick-laid pond to the northwest of the garden offers the perfect spot to enjoy a morning coffee while taking in the tranquil surroundings.

Rent Cottage represents a rare opportunity to acquire a Grade II listed home of significant character, offering a balance of heritage charm and practical family living. The property has remained within the same family for over 50 years and is now available for the first time in half a century.

Council Tax band: G

Tenure: Freehold







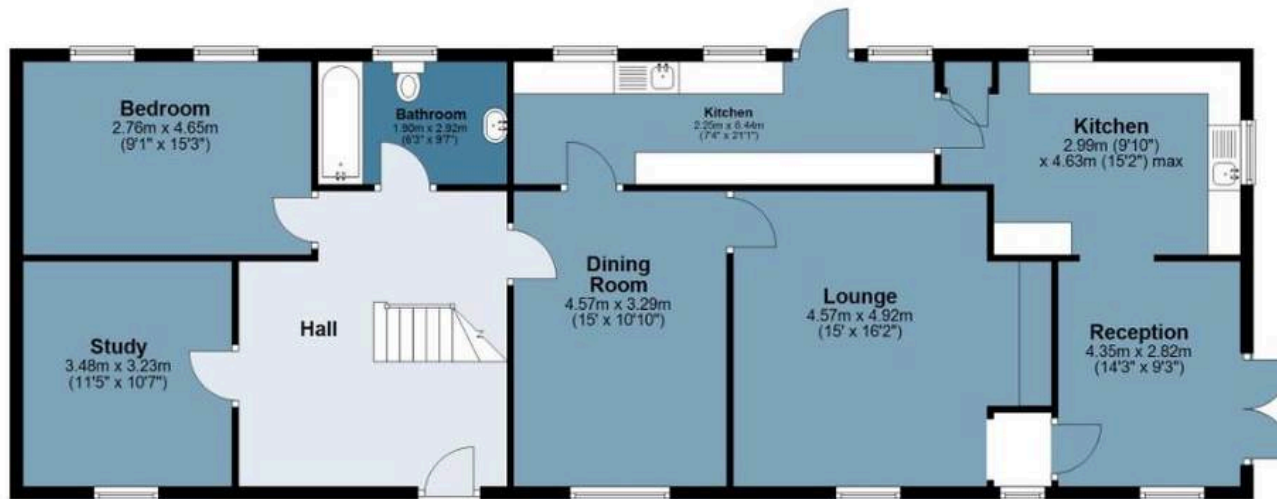
Mount End

Approx. Gross Internal Area 261.1 Sq M (2810 Sq Ft)

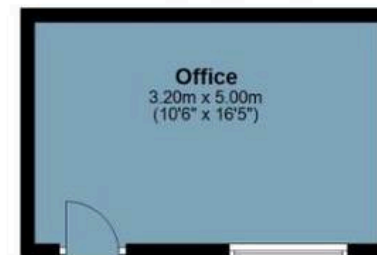
BUTLER & STAG



Ground Floor
Approx. 123.9 sq. metres (1333.3 sq. feet)



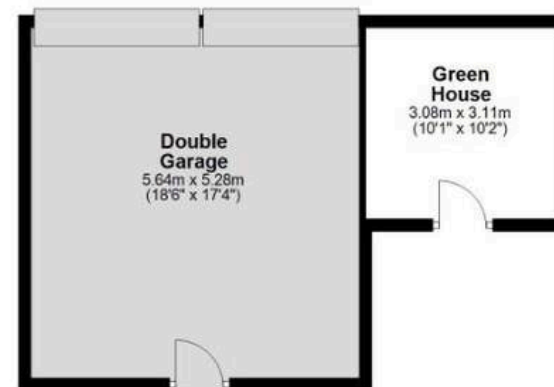
Outbuilding
Approx. 16.0 sq. metres (172.2 sq. feet)



First Floor
Approx. 81.6 sq. metres (877.9 sq. feet)



Outbuilding
Approx. 39.6 sq. metres (426.6 sq. feet)



Measurements are approximate and for illustration purposes only. While we do not doubt the accuracy and completeness, we advise you conduct a careful independent assessment of the property to determine monetary value.

FROM EAST LONDON ENERGY TO WEST ESSEX EASE

We Make Moving Home Easy.

At Butler and Stag, we do more than just connect London to West Essex – we make the move seamless. With offices spanning from vibrant East London to the tranquillity of West Essex, we understand the nuances of each area and the journey people take between them. Our marketing goes beyond standard listings, showcasing every property with precision, creativity, and reach that others simply can't match. Coupled with an unparalleled attention to detail, from first enquiry to final move-in, we ensure every client and customer feels informed, supported, and confident. Simply put, we do the little things that make a big difference, setting us apart in every step of the property experience.



LONDON STRATFORD SOUTH WOODFORD BUCKHURST HILL LOUGHTON EPPING BEYOND

Like what you see? Let's talk

Book your **FREE** valuation now



01992 667666

theydon@butlerandstag.com

4 Forest Drive, Theydon Bois, CM16 7EY

[butlerandstag.uk](https://www.butlerandstag.uk)

IMPORTANT NOTICE - These particulars have been prepared in good faith and they are not intended to constitute part of an offer or contract. We have not performed a structural survey on this property and the services, appliances and specific fittings have not been tested. All photographs, measurements, floor plans and distances referred to are given as a guide and should not be relied upon.

BUTLER & STAG

