

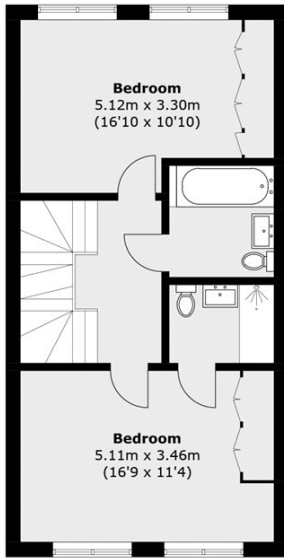


SCHOONER ROAD, E16

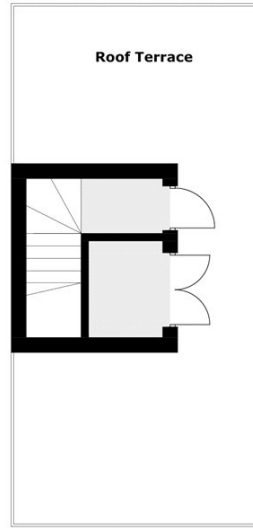
£1,100,000

A four bedroom, four bathroom townhouse with a roof terrace and south facing garden located in this sought after Royal Wharf development. This spacious layout offers natural light and modern design throughout all four residential floors with high-spec, built-in appliances in the kitchen and a private garden to the rear.

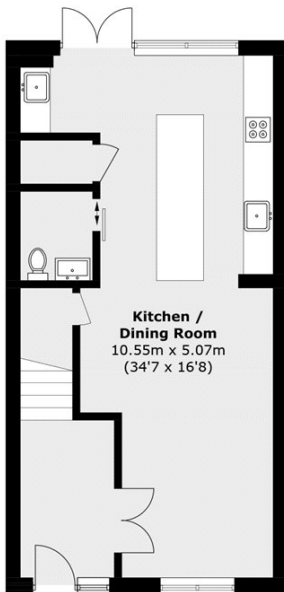
- Four Bedrooms
- South Facing Garden
- Underground Parking
- Lease Length 991 Years
- Ground Rent £960
- Service Charge £6.980



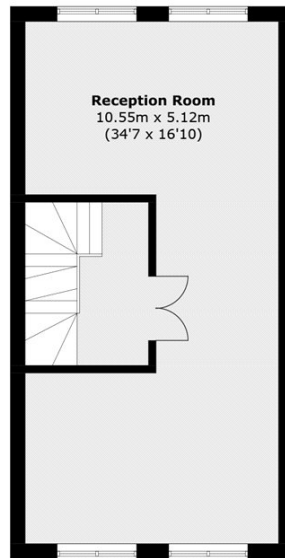
Third Floor



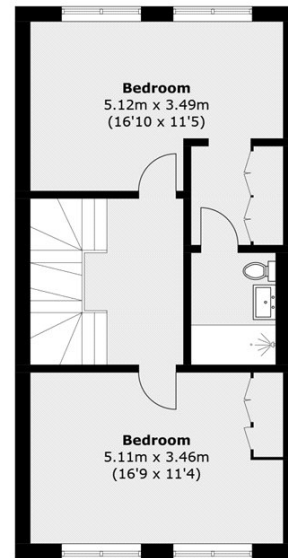
Fourth Floor



Ground Floor



First Floor



Second Floor

Total area (approx.): 225.3 sq. m (2,424.9 sq. ft)
Roof Terrace : 39.4 sq. m (424.1 sq. ft)

LiFE RESIDENTIAL

36 Millharbour, London, E14
9JS
Sales: 020 3668 1033
Lettings: 020 3668 1030

Energy Rating: B. We aim to make our particulars both accurate and reliable. However they are not guaranteed; nor do they form part of an offer or contract. If you require clarification on any points then please contact us, especially if you're traveling some distance to view. Please note that appliances and heating systems have not been tested and therefore no warranties can be given as to their good working order.