



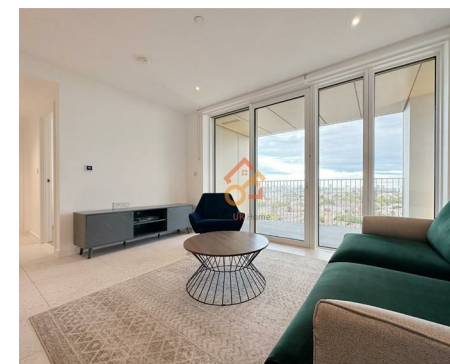
Let **UK** Home

**2 Bedrooms**

**Flat**

**Located in London**

**£3,600 Per Month**



[info@letukhome.co.uk](mailto:info@letukhome.co.uk)

<https://www.letukhome.co.uk/>

01795 358 886



# 7 Cendal Crescent London

E1 2FU



Let UK Home are excited to offer this spectacular two bedroom apartment in the heart of Silk District in Whitechapel.

This property comprises a large bright open plan kitchen and living room leading to a large private balcony with great views, two double bedrooms(master with wardrobe & en-suite), a large family sized bathroom and ample storage. A virtual viewing is provided.

The residents of this apartment will enjoy a range of amenities including concierge service, gym, spinning room, screening room and terrace, flexible and designed work and study space, etc.

The apartment is just one street away from Whitechapel subway station. At the same time, Whitechapel station is also a transportation hub for the District and Hammersmith & City subway lines. From here, you can quickly reach the City of London, Canary Wharf and other places.

Starting from the development, you can walk to Queen Mary University of London. In addition, taking the subway or bus can conveniently reach well-known institutions such as the University of London Business School, University College London, King's College London, the London School of Economics and Political Science, and the University of the Arts London.

Within walking distance of the apartment, there is a large Sainsbury's shopping center, Asda department store, White Chapel Post Office and the famous Barclays Bank.

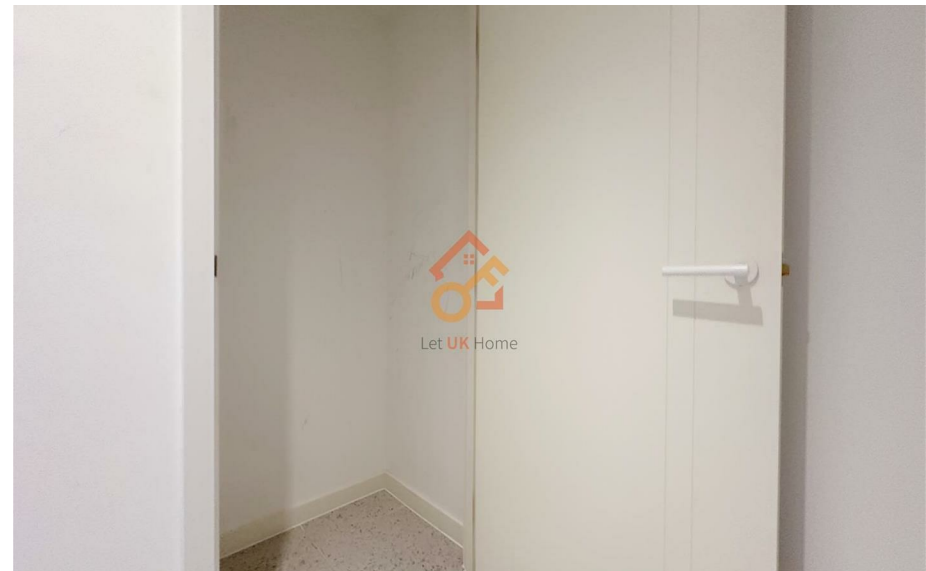
# 7 Cendal Crescent London

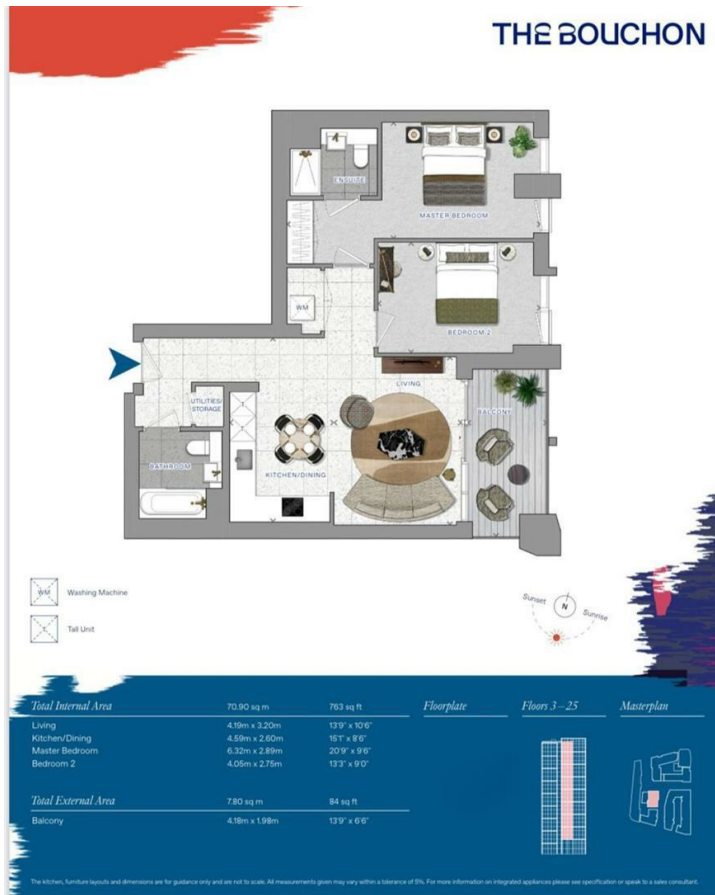
£3,600 Per Month



- 16th Floor
- The Gym
- Cinema & Game Room
- Virtual Viewing Available

- Concierge Service
- 24h Security
- Co-working Space
- EPC Rating: B





Let **UK** Home

3F 2 Eastbourne Terrace  
Paddington  
London  
W2 6LG

01795 358 886

info@letukhome.co.uk

**Council Tax Band: F**

**Local Authority:**

Agents Note: Whilst every care has been taken to prepare these particulars, they are for guidance purposes only. All measurements are approximate and are for general guidance purposes only and whilst every care has been taken to ensure their accuracy, they should not be relied upon and potential buyers/tenants are advised to recheck the measurements.

Energy Efficiency Rating		Current	Potential
Very energy efficient - lower running costs			
(92 plus) <b>A</b>			
(81-91) <b>B</b>		86	86
(69-80) <b>C</b>			
(55-68) <b>D</b>			
(39-54) <b>E</b>			
(21-38) <b>F</b>			
(1-20) <b>G</b>			
Not energy efficient - higher running costs			
<b>England &amp; Wales</b>	EU Directive 2002/91/EC		

<https://www.letukhome.co.uk/>