

**110 FULLERS WAY SOUTH
CHESSINGTON
KT9 1HF
£550,000**

EXTENDED SEMI DETACHED HOUSE

THREE BEDROOMS

TWO RECEPTION AREAS

16' X 11'11" OPEN PLAN KITCHEN DINING ROOM

MODERN WHITE BATHROOM SUITE

DOUBLE GLAZED WINDOWS

GAS CENTRAL HEATING

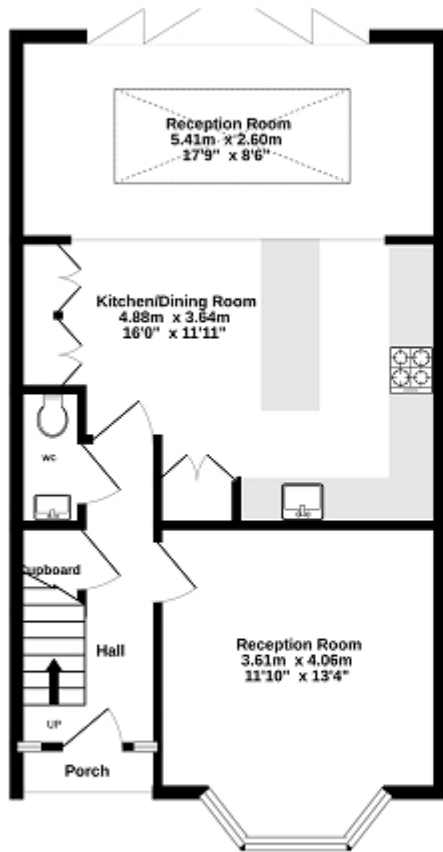
32' X 22' WESTERLY FACING GARDEN

OFF STREET PARKING

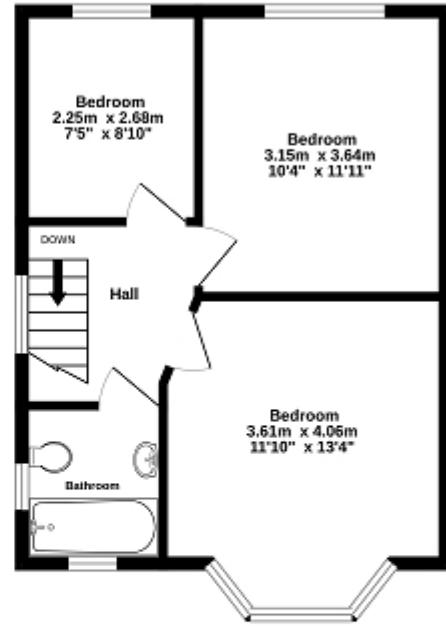
WELL PRESENTED

AN IDEAL FAMILY HOME

Ground Floor
55.0 sq.m. (592 sq.ft.) approx.



1st Floor
41.0 sq.m. (441 sq.ft.) approx.



TOTAL FLOOR AREA: 96.0 sq.m. (1033 sq.ft.) approx.

While every attempt has been made to ensure the accuracy of the floorplan contained here, measurements of doors, windows, rooms and any other items are approximate and no responsibility is taken for any error, omission or mis-statement. This plan is for indicative purposes only and should be used as such by any prospective purchaser. The services, systems and appliances shown have not been limited and no guarantee as to their operability or efficiency can be given.
Made with Metropix 62520



Energy Efficiency Rating

	Current	Potential
Very energy efficient - lower running costs		
(92+) A		
(81-91) B		87
(69-80) C	69	
(55-68) D		
(39-54) E		
(21-38) F		
(1-20) G		
Not energy efficient - higher running costs		
England, Scotland & Wales	EU Directive 2002/91/EC	

The energy efficiency rating is a measure of the overall efficiency of a home. The higher the rating the more energy efficient the home is and the lower the fuel bills will be.