

## Flat 3, 2A Southey Street, Nottingham, NG7 4BG

£700 Per week

- Available 2026/2027 Academic Year- £100 pppw based on 7 sharing
- Open Plan Lounge / Diner
- 3 Modern Shower Rooms
- Walking Distance To Nottingham Trent University
- Excellent Transport Links
- 7 Bedroom Apartment- Bills Inclusive (subject to fair usage)
- Fully Fitted Kitchen
- Popular Location
- Close To Arboretum Park
- EPC - C / Council Tax A

# Flat 3, 2A Southey Street, Nottingham NG7 4BG

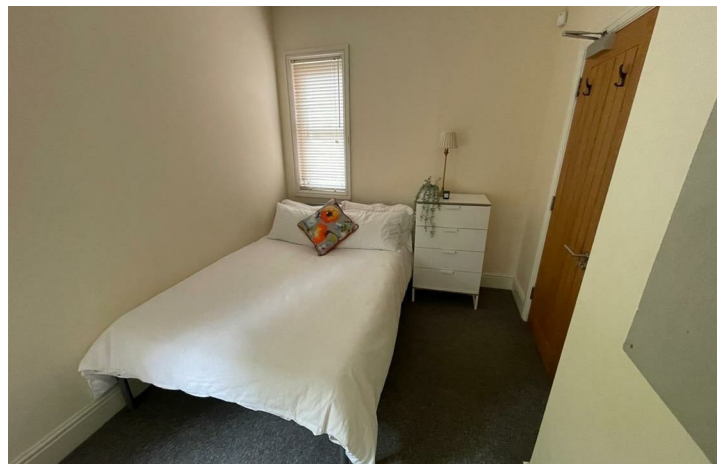
HALF THE FIRST MONTHS RENT IF SIGN UP BY THE END OF MAY  
\*\*Available Academic Year 2026/2027\*\*  
Zero Deposit available!

7 Bedroom Student Apartment located on Southey Street, in the popular area of the Arboretum.  
£100.00 PPPW based on 7 sharing  
Bills inclusive (subject to fair usage)

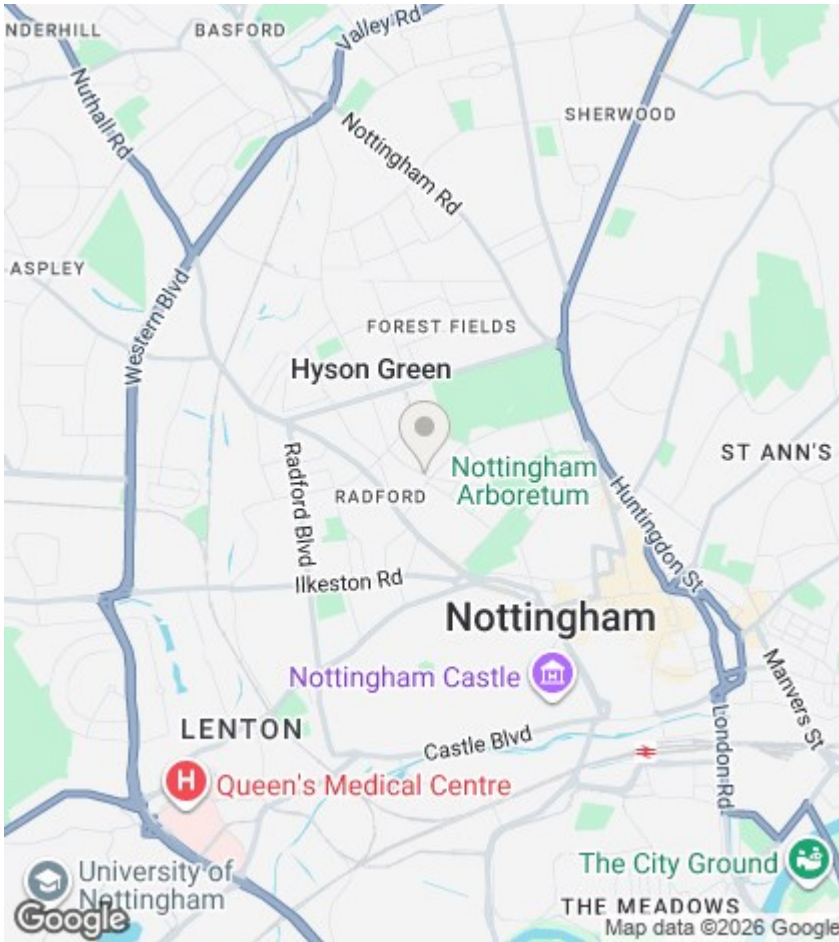
This modern 7 bed apartment on Southey Street is perfect for students who want comfort and convenience all in one place.  
This apartment is modern and spacious, with an open plan living and dining area.  
7 spacious bedrooms with storage and desk and chair.  
Just a short walk to Nottingham Trent University and the City Centre  
Right by the Arboretum Park, perfect for a break from studying  
Surrounded by shops, cafés, and great transport links



Council Tax Band: A







## Directions

## Viewings

Viewings by arrangement only. Call 01157042554 to make an appointment.

## EPC Rating:

D

| Energy Efficiency Rating                    |  | Current                 | Potential |
|---|--|-------------------------|-----------|
| Very energy efficient - lower running costs |  |                         |           |
| (92 plus) A                                 |  |                         |           |
| (81-91) B                                   |  |                         |           |
| (69-80) C                                   |  |                         |           |
| (55-68) D                                   |  | 58                      |           |
| (39-54) E                                   |  |                         |           |
| (21-38) F                                   |  |                         |           |
| (1-20) G                                    |  |                         |           |
| Not energy efficient - higher running costs |  |                         |           |
| England & Wales                             |  | EU Directive 2002/91/EC |           |