



Plot 30, The Canterbury Corner Roseberry Park, 1 Marr Crescent
TRANENT | EH33 2FB


warners
solicitors & estate agents



Plot 30, The Canterbury Corner Roseberry Park, 1 Marr Crescent

TRANENT | EH33 2FB

The Canterbury Corner is a stunning 4-bedroom detached home that combines clever design with high-quality materials to create a space you'll love.

Located on a corner plot, this home takes advantage of its position with additional windows in the family room, allowing more light in and providing views in different directions.

Other highlights include an open plan kitchen dining area, integrated garage, utility room and en-suite off bedroom one.

- Personalised Incentives available
- Reserve for £99 throughout April
- Stunning 4-bedroom detached home with an integral garage
- Open plan kitchen/dining
- Primary bedroom with integrated storage and en-suite
- Private garden

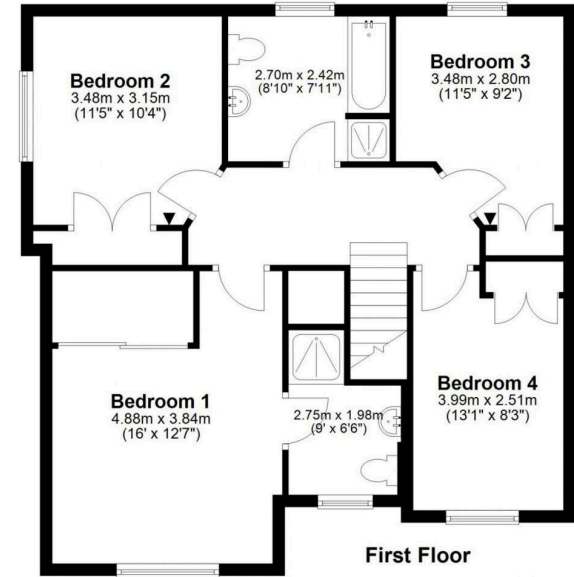
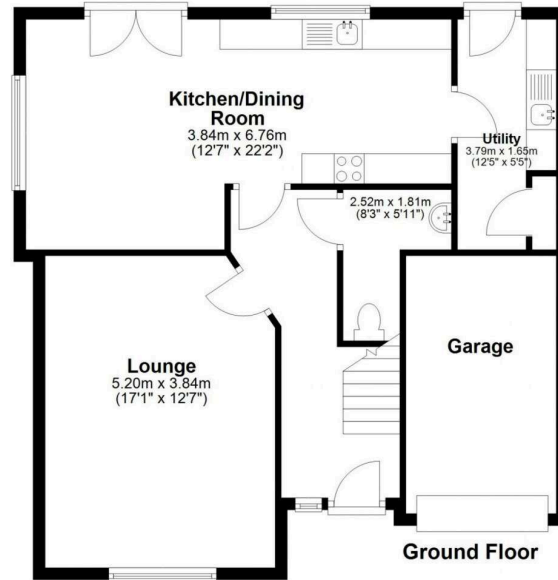


PRICE & VIEWING: Please refer to our website,
www.warnersllp.com or call us on 0131 667 0232.



The subjects are located in the thriving East Lothian town of Tranent, which lies within easy commuting distance of Edinburgh. The local area boasts a wide range of local amenities and services, including local shops, an Asda supermarket and a post office. Schooling is well represented from nursery to senior level within the area. Surrounded as it is by open countryside and located close to some of East Lothian's best golf courses and beaches, this prime location will undoubtedly appeal to a wide cross section of the public. An efficient public transport network is on hand, which operates to many parts of East Lothian, to Edinburgh and further afield. The A1, city bypass and main motorway networks are also within easy reach.





This plan is for illustrative purposes only and should only be used as such by a prospective purchaser.
For details of the internal floor area, please refer to the Home Report.