



Price
£525,000

Freehold

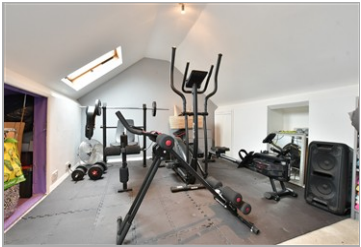
3x  1x  2x 

**Chadwell Heath Lane,
Romford, Essex, RM6**

OVER 60?

Secure this property
for up to **59% less!**

 **DOUGLAS
ALLEN**
Helping you move forwards



Main features

- Well presented terraced house with off street parking
- Spacious loft room
- Large kitchen/breakfast room with plenty of storage
- Close to Chadwell Heath station/Elizabeth Line
- Good Primary & Secondary schools nearby

Accommodation

GROUND FLOOR

Entrance Hall

Lounge: 13'2 x 11'2 (4.02m x 3.41m)

Dining Room: 11'5 x 7'7 (3.48m x 2.31m)

Kitchen/Breakfast Room: 16'7 (5.06m) x 11'4 (3.46m) narrowing to 8'3 at narrowest point (2.52m)

Cloakroom

FIRST FLOOR

Landing

Bedroom 1: 13'4 x 10'5 (4.07m x 3.18m)

Bedroom 2: 11'4 x 10'6 (3.46m x 3.20m)

Bedroom 3: 7'9 x 6'1 (2.36m x 1.86m)

Bathroom

SECOND FLOOR

Loft Room: 15'4 x 10'5 (4.68m x 3.18m)

OUTSIDE

Rear Garden

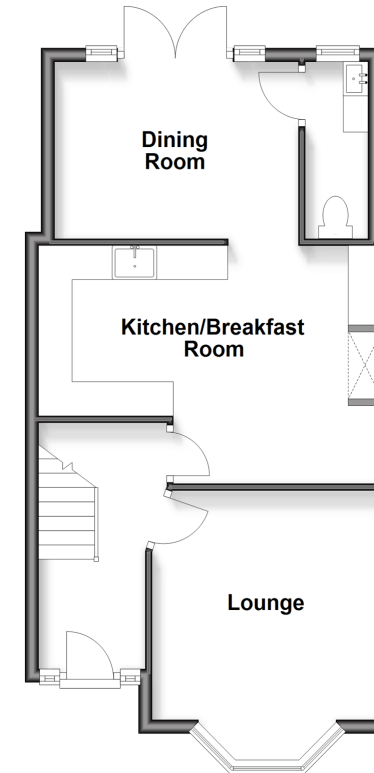
Off Street Parking

Call Chadwell Heath - 020 8597 0043 ■ douglasallen.co.uk

- A private rental licensing scheme applies to some properties in this area, please check with the Local Authority before proceeding
- Legal advice should be taken to verify fixtures/fittings, planning, alterations and/or lease details
- Appliances & services are untested, dimensions are approximate and floor plans are not to scale
- Through a Homewise Home For Life Plan people aged 60+ can secure this property for up to 59% less, by purchasing a Lifetime Lease

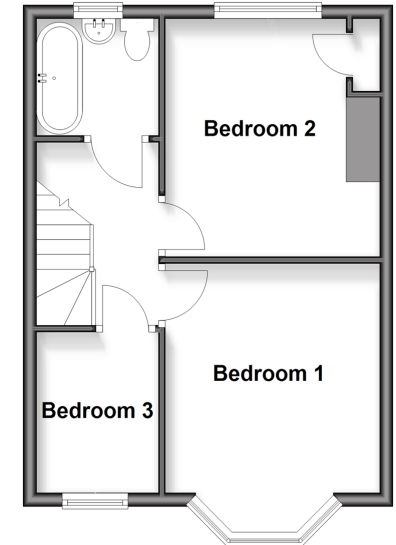
Ground Floor

Approx. 47.1 sq. metres (506.9 sq. feet)



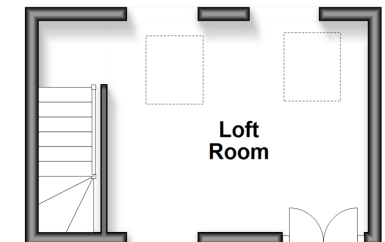
First Floor

Approx. 35.8 sq. metres (385.2 sq. feet)



Second Floor

Approx. 15.2 sq. metres (163.6 sq. feet)



50714285/20260124/CN/RW