



## Turle Road, N4

£550,000

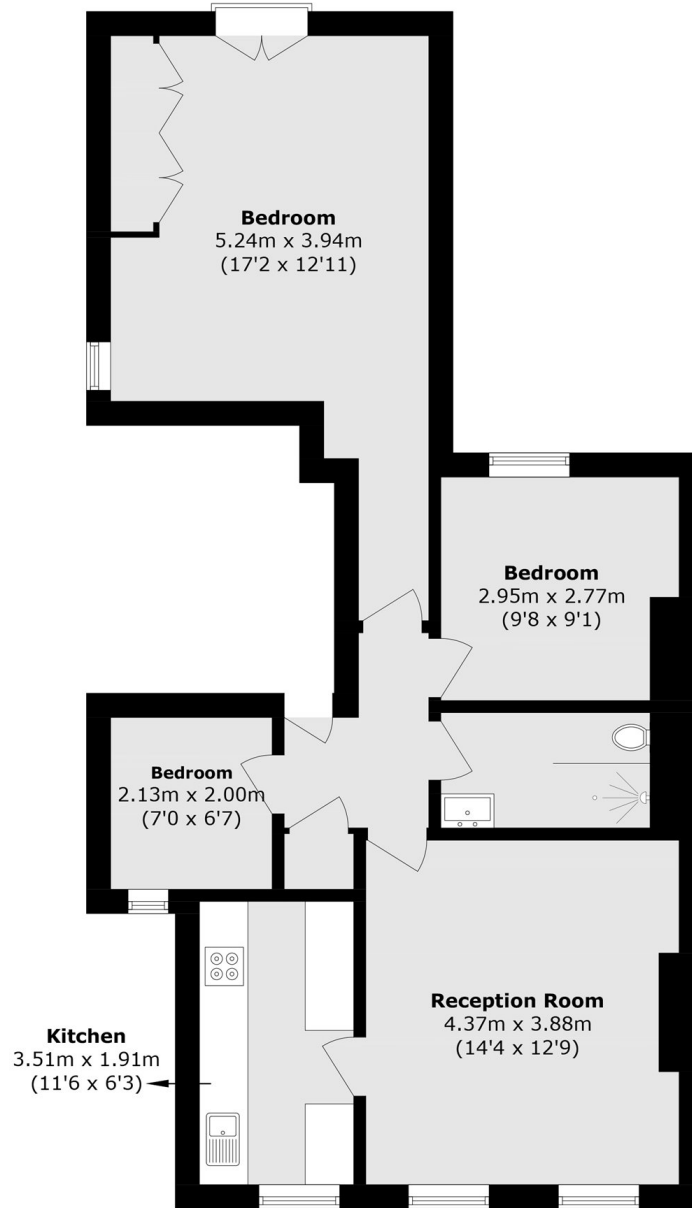
A spacious three bedroom apartment set on the first floor within a beautiful Victorian conversion offering wood floors, a newly renovated bathroom, a separate kitchen and access to a private garden.

Turle Road is situated within close proximity of the green open space at Finsbury Park. Stroud Green Road offers a range of amenities including supermarkets, eateries, independent coffee shops, wine bars and bakeries.

### Features

- Victorian Terrace
- Three Bedroom
- Separate Kitchen
- Private Garden
- Great Transport Links
- Share Of Freehold

# Turle Road, London, N4



Total area (approx.): 67.5 sq. m (726.5 sq. ft)