





Cedar Green, Hoddesdon, EN11 8BZ

Westwood Leber are delighted to bring to the market this three-bedroom mid-terrace family home situated in this popular residential close in Hoddesdon.

This well-presented property offers bright and spacious living accommodation throughout. The ground floor comprises a welcoming entrance hall with a downstairs cloakroom, a modern fitted kitchen, and a generous lounge/dining room with direct access to the rear garden, creating the ideal space for family living and entertaining.

On the first floor, the property benefits from three well-proportioned bedrooms, alongside a family bathroom.

Externally, the home enjoys a private rear garden, perfect for outdoor dining and relaxation, with the additional benefit of residents' parking.

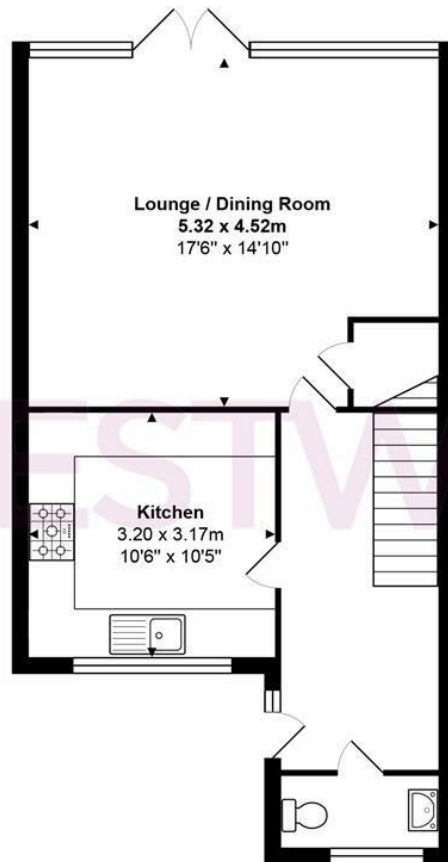
Cedar Green is ideally located within close proximity to Hoddesdon Town Centre, excellent local schools, and transport links including Rye House and Broxbourne Stations, offering direct services into London.

An early internal viewing is highly recommended!

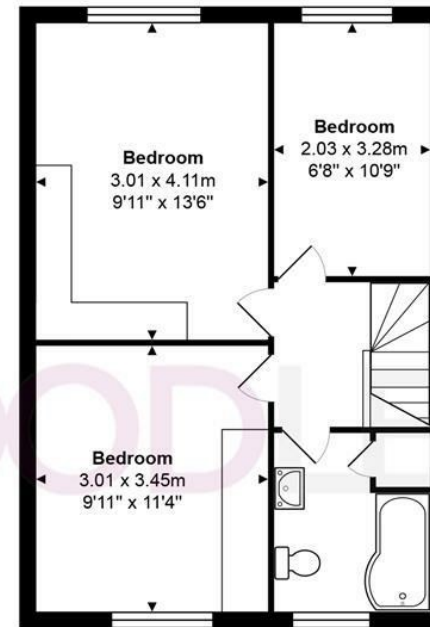


W WESTWOODLEBER

W WESTWOODLEBER
LET US GUIDE YOU HOME



Ground Floor



First Floor

Total Area: approx. 85.6 m² ... 921 ft²

THE FLOORPLAN IS FOR ILLUSTRATIVE PURPOSES ONLY AND IS NOT TO SCALE.
 Measurements and features are approximate and may differ from the actual property. Verify all details independently; no liability is accepted for errors or omissions.

Property marketing provided by www.fotomarketing.co.uk









WESTWOODLEBER



WESTWOODLEBER



WESTWOODLEBER



WESTWOODLEBER

