



Old Worting Road, Basingstoke - RG22 6NX

£475,000 OFFERS OVER

1930's SEMI-DETACHED PROPERTY • 3 BEDROOMS • OFF ROAD DRIVEWAY PARKING • REFITTED KITCHEN • SEPARATE UTILITY ROOM • REFITTED BATHROOM • CLOSE PROXIMITY TO TOWN CENTRE • POTENTIAL TO EXTEND SUBJECT TO USUAL PLANNING CONSENT • DOWNSTAIRS WC • REWIRED THROUGHOUT

01256 321777

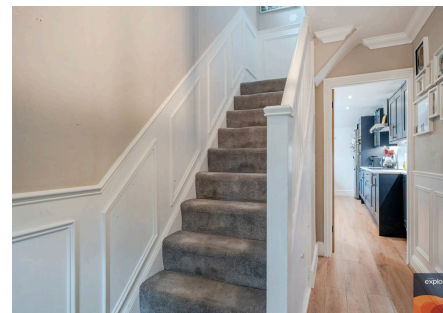
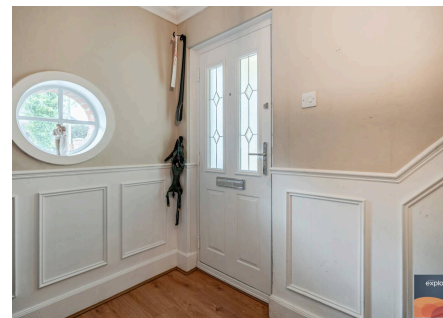
www.thepropertyexplorer.co.uk

the property
explorer

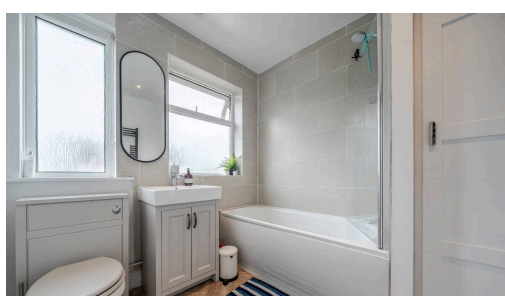
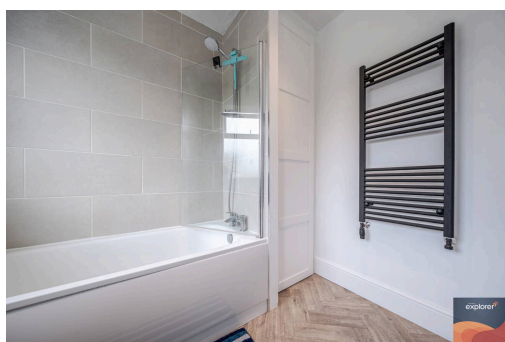
Delighted to offer to the market this unique and rarely available three bedroom semi detached 1930s family home, ideally positioned on a traditional residential road within close proximity to Basingstoke Town Centre. Further enhancing its appeal, the property sits within a welcoming community, with a strong neighbourhood feel. The corner plot also presents exciting potential for future extension or loft conversion, subject to the necessary planning permissions. Old Worting Road is conveniently located within easy reach of Basingstoke Town Centre and a wide range of local amenities, including Basingstoke Leisure Park. The area is well served by reputable schools such as Bishop Challoner Catholic Secondary School. For commuters, the property offers excellent transport links via the M3 motorway and Basingstoke mainline railway station, with direct services to London Waterloo in approximately 45 minutes.

Council Tax band: D

EPC Energy Efficiency Rating: D



- › 1930's SEMI-DETACHED PROPERTY
- › 3 BEDROOMS
- › OFF ROAD DRIVEWAY PARKING
- › REFITTED KITCHEN
- › SEPARATE UTILITY ROOM
- › REFITTED BATHROOM
- › CLOSE PROXIMITY TO TOWN CENTRE
- › POTENTIAL TO EXTEND SUBJECT TO USUAL PLANNING CONSENT
- › DOWNSTAIRS WC
- › REWIRED THROUGHOUT





Old Worting Road, Basingstoke, RG22

Approximate Area = 1152 sq ft / 107 sq m

For identification only - Not to scale

