



Forest Edge Court, Great Hockham, Nr Thetford, Norfolk, IP24 1FQ

£194,995

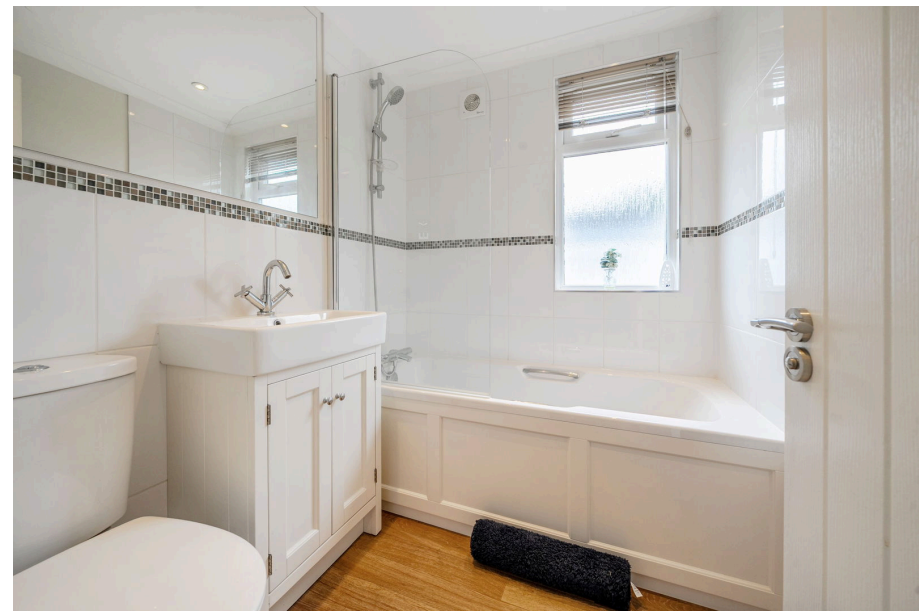
🛏 2 🚿 2 🛋 1



- Detached Park Home Bungalow
- Two Double Bedrooms
- Generous Lawned Plot
- Popular Gated Residential Park
- Kitchen With Integrated Appliances
- Prestige 'Sofia' Design
- Ensuite and Guest Bathroom
- Driveway To The Side
- Close To Thetford Forest
- NO STAMP DUTY TO PAY

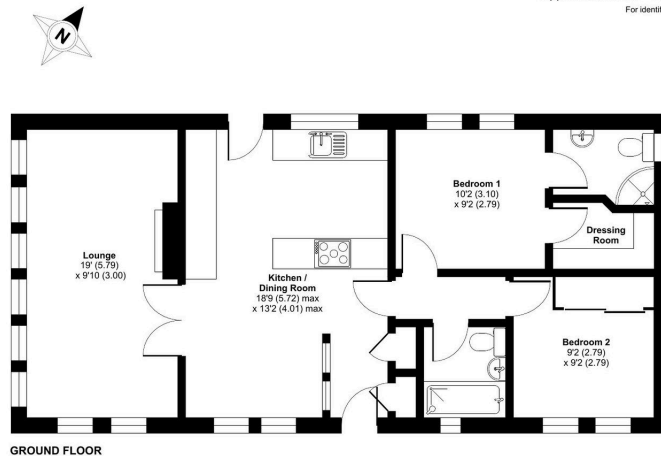


A well presented and deceptively spacious two bedroom detached park home bungalow(42'x20') located on a generous plot on this popular gated residential park for the over 45's close to Thetford Forest. This Prestige 'Sofia' design offers part-vaulted ceilings, with an impressive kitchen/dining room with integrated appliances, a dual aspect living lounge with fireplace, two double bedrooms with the master bedroom having a walk-in wardrobe and an ensuite shower room as well as a further guest bathroom. Outside, there are lawned gardens to all sides of the home and a driveway to the side. An internal viewing is essential.



Cherry Blossom Drive, Great Hockham, Thetford, IP24

Approximate Area = 764 sq ft / 71 sq m
For identification only - Not to scale



Floor plan produced in accordance with RICS Property Measurement 2nd Edition, incorporating International Property Measurement Standards (IPMS2 Residential). © richcom 2025. Produced for The Park Home Agency Ltd. REF: 1207927



01793 230185

sales@theparkhomeagency.co.uk

Agents Notes: All measurements are approximate and quoted in metric with imperial equivalents and for general guidance only and whilst every attempt has been made to ensure accuracy, they must not be relied on. The fixtures, fittings and appliances referred to have not been tested and therefore no guarantee can be given that they are in working order. Internal photographs are reproduced for general information and it must not be inferred that any item shown is included with the property. For a free valuation, contact the numbers listed on the brochure