



Flat 37, Wedderburn Lodge Wetherby Road, Harrogate

Harrogate

Guide Price £135,000



MYRINGS



Flat 37

Wedderburn Lodge Wetherby Road,
Harrogate

A bright and generously proportioned two-bedroom flat set within a secure, well-maintained building with lift access and pleasant communal areas, conveniently located just off Wetherby Road and within walking distance of Harrogate town centre.

Council Tax band: D

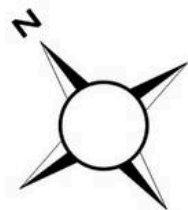
Tenure: Leasehold

- TWO BEDROOM FLAT
- SPACIOUS LOUNGE WITH JULIET BALCONY
- USEFUL STORAGE/UTILITY CUPBOARDS
- SECURE COMMUNAL ENTRANCE
- WELL-MAINTAINED COMMUNAL AREAS
- WALKING DISTANCE TO HARROGATE TOWN CENTRE
- DEDICATED OVER-55 BUILDING



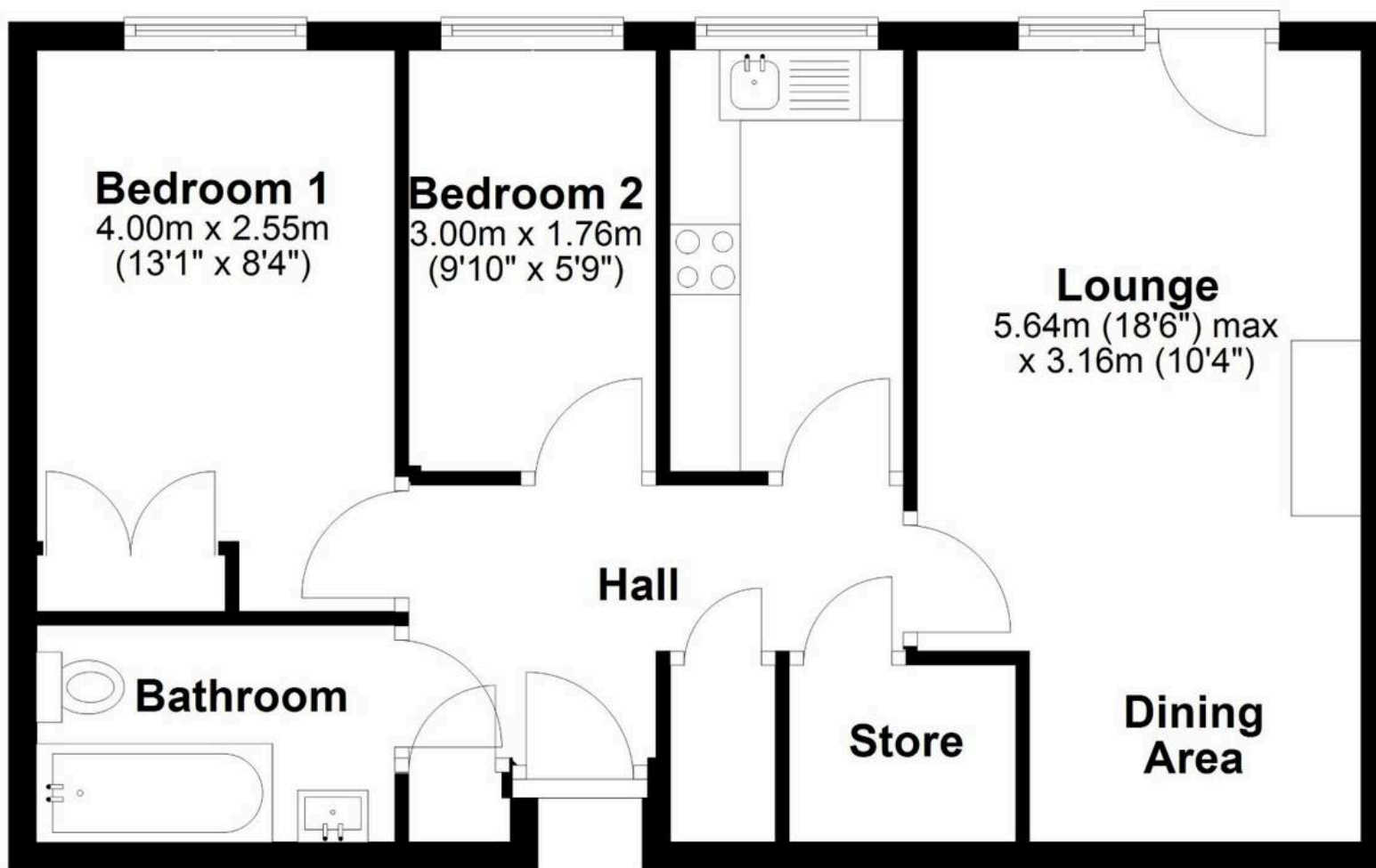
MYRINGS





First Floor

Approx. 52.6 sq. metres (566.3 sq. feet)



Total area: approx. 52.6 sq. metres (566.3 sq. feet)

All measurements are approximate and display purposes only.
Plan produced using PlanUp.





Myrings Estate Agents

Myrings Estate Agents Ltd, 10 Princes Square - HG1 1LX

01423

566400

▪ enquiries@myringsestateagents.com ▪ <http://myringsestateagents.com/>

